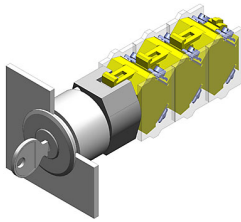


# EAO – Your Expert Partner for Human Machine Interfaces

## 704.121.018 - Keylock switch actuator 2 positions

### 704.121.018 - Keylock switch actuator 2 positions



*Attention: The preview is based on a sample product. This can differ from your current configuration.*

#### Mounting

Mounting cut-out Ø 30,5 mm  
Design flush

#### Front

Front shape round  
Front dimension Ø 35 mm  
Front bezel colour natural  
Front bezel material Aluminium

#### Other Attributes

Weight 0,099 kg

#### Operating-/Indication part

Switching angle

#### IP-Rating

Front protection IP65

#### Actuator

Switching action

#### Switching element

Rotary positions 2  
max. number of switching elements 3

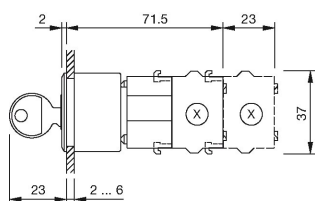
#### Function

Keylock switch

# EAO – Your Expert Partner for Human Machine Interfaces

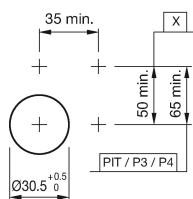
## 704.121.018 - Keylock switch actuator 2 positions

### Dimensions



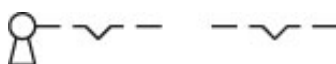
X = Screw terminal

### Mounting cut-outs

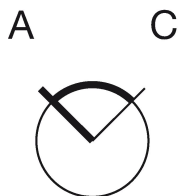


PIT = Push-in terminal

### Wiring diagram



### Switching positions



### Additional information

The standard lock Ronis 251  
Two keys are supplied with each key lock switch  
Further lock numbers see «Technical data»  
Max. 3 switching elements can be clipped on  
The colour of anodized aluminium parts can vary due to technical production reasons

### Legend

Switching action: A = Rest, C = Maintained