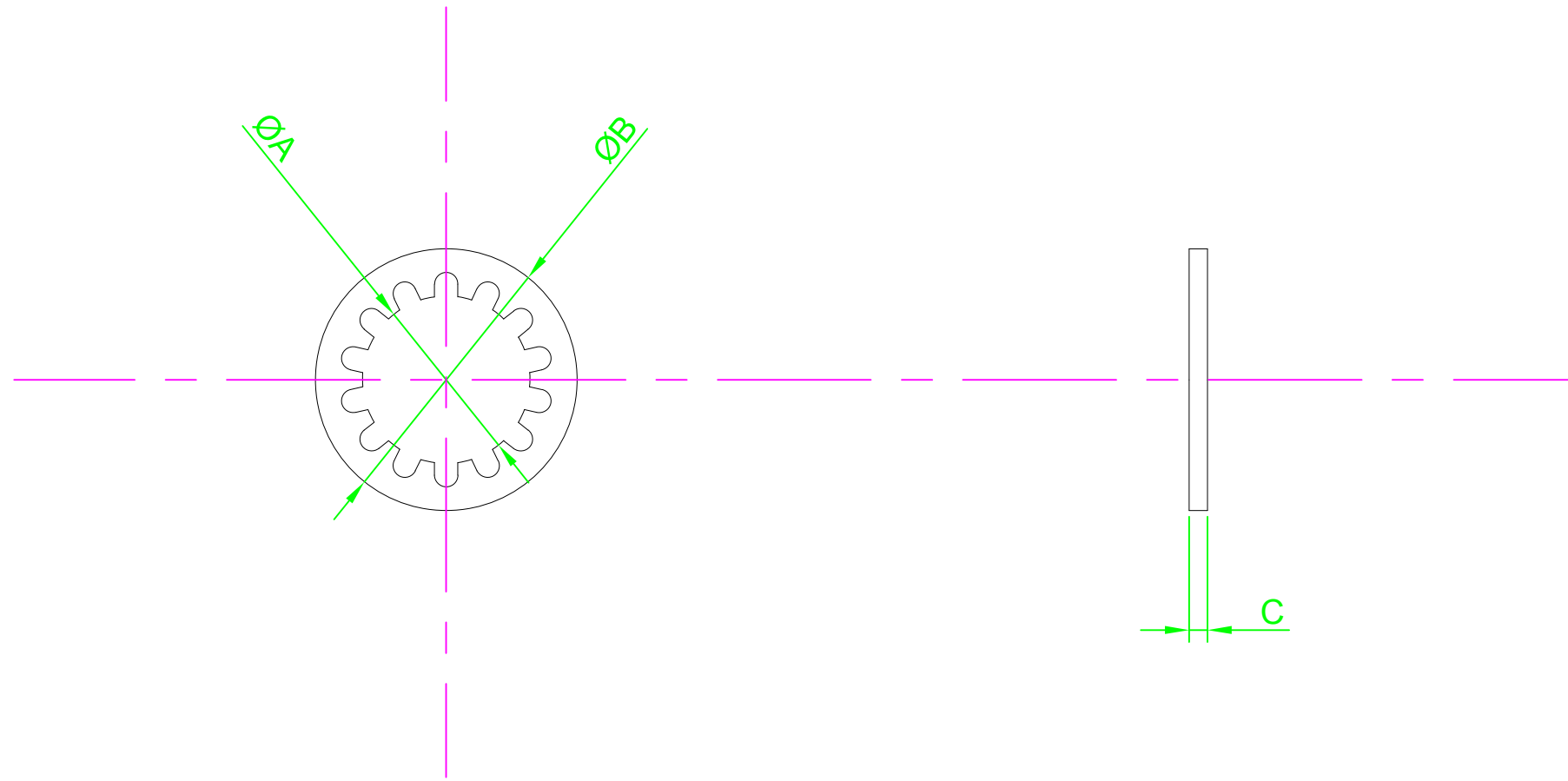
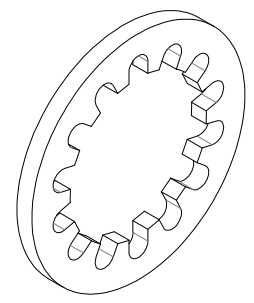


DO NOT SCALE DRAWING




REVISION	
A	INITIAL DRAWING 17.9.15

Part Number	ØA Nom	ØB Max	C Nom	Min No. of Teeth
DM2 - ITA2-S100	2.20	4.5	0.3	6
DM2.5 - ITA2-S100	2.70	5.5	0.4	6
DM3 - ITA2-S100	3.20	6.0	0.4	6
DM3.5 - ITA2-S100	3.70	7.0	0.5	6
DM4 - ITA2-S100	4.30	8.0	0.5	8
DM5 - ITA2-S100	5.30	10.0	0.6	8
DM6 - ITA2-S100	6.40	11.0	0.7	8
DM8 - ITA2-S100	8.40	15.0	0.8	8



NOTES:



DESIGN RIGHT. TR FASTENINGS LTD, 2003
 UNDER NO CIRCUMSTANCES MUST THIS
 DRAWING BE COPIED OR DISCLOSED
 WITHOUT FIRST OBTAINING WRITTEN
 AUTHORITY.

UNLESS OTHERWISE SPECIFIED:
 DIMENSIONS ARE IN MM (MILLIMETERS).
 SURFACE FINISH:
 TOLERANCES: DIN 6797

NAME	DATE
DRAWN Darryl Wilson	17.09.15
CHK'D	
APPVD	

CUSTOMER PART NUMBER:
 N/A

MATERIAL:
 Stainless Steel A2

HEAT TREATMENT:

FINISH:
 SELF FINISH

TITLE:
 Internal Toothed Lock Washer DIN 6797J

DRAWING NUMBER:
 DITA2-S100

A4