

(<https://www.dfrobot.com/product-90.html>)

## Introduction

---

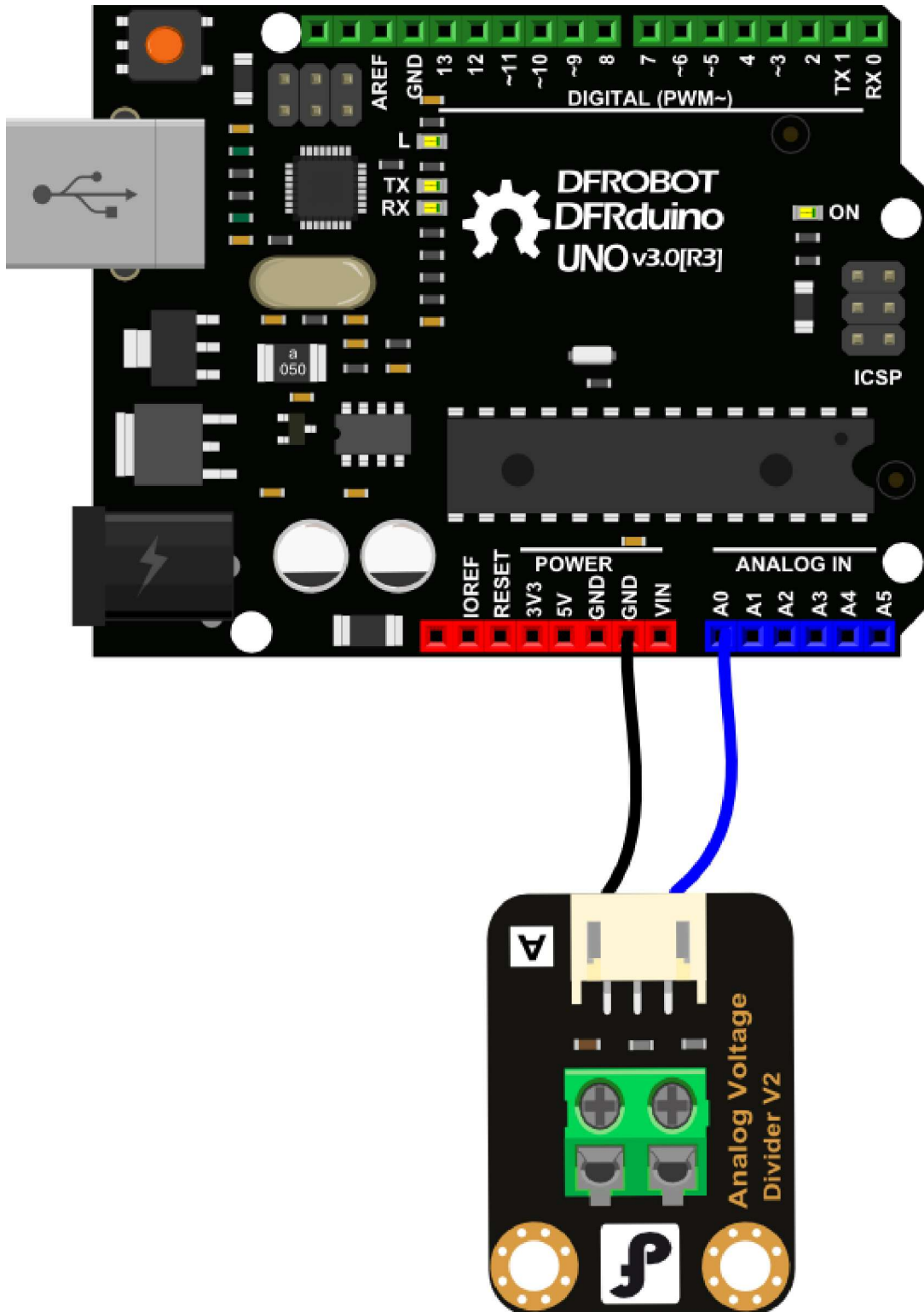
Analog Voltage Divider (SKU: DFR0051) The Voltage Divider can detect the supply voltage up to 25V. The DFRobot Voltage Divider module is based on resistor divider principle. The voltage detection module allows the input voltage to reduce 5 times. As the Arduino analog input voltage is up to 5V, so voltage detection module's input voltage can not be greater than the  $5V \times 5 = 25V$ .

## Specification

---

- Interface: Analog
- Input voltage (DC): Maximum 25V, Minimum 0.0245V
- Detects the supply voltage up to 25V
- Size: 22x30mm

## Connection Diagram



### Sample Code

```
void setup()
{
  Serial.begin(9600);
}
void loop()
{
  int val;
  float temp;
  val=analogRead(0);//This divider module will divide the measured voltage by 5, the n
  temp=val/40.92; //
  val=(int)temp;//
  Serial.println(val);
  delay(100);
}
```

## More Documents

---

- Version history
- Analog Voltage Divider ([https://www.dfrobot.com/wiki/index.php?title=Analog\\_Voltage\\_Divider\\_\\_SKU:\\_DFR0051\\_](https://www.dfrobot.com/wiki/index.php?title=Analog_Voltage_Divider__SKU:_DFR0051_))



Get **Analog Voltage Divider V2** (<https://www.dfrobot.com/product-90.html>) from DFRobot Store or **DFRobot Distributor**. (<https://www.dfrobot.com/index.php?route=information/distributorslogo>)

Category: DFRobot (<https://www.dfrobot.com/>) > Sensors & Modules (<https://www.dfrobot.com/category-156.html>) > Sensors (<https://www.dfrobot.com/category-36.html>) category: Product Manual (category\_\_Product\_Manual) category: DFR Series (category\_\_DFR\_Series) category: Module (category\_\_Module) category: Diagram (category\_\_Diagram) category: DFRobot (category\_\_DFRobot)

**Turn to the Top**