

NOTES:

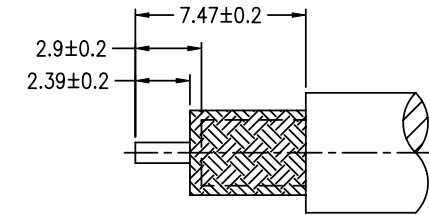
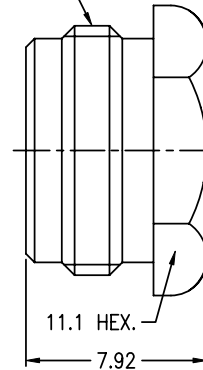
1. MATERIALS AND FINISHES:  
 BODY - BRASS, NICKEL PLATING  
 CONTACT - BRASS, SILVER PLATING  
 INSULATOR - PTFE, NATURAL
2. ELECTRICAL:  
 A. IMPEDANCE: 50 OHM  
 B. FREQUENCY RANGE: DC 0-4 GHz  
 C. DIELECTRIC WITHSTANDING VOLTAGE: 1500 VRMS, MIN.
3. MECHANICAL:  
 A. DURABILITY: 500 CYCLES MIN.  
 B. TEMPERATURE RANGE: -65°C to +165°C
4. WHEN SOLDERING CONTACT TO CABLE, LEAD FREE.

THIRD ANGLE PROJ.

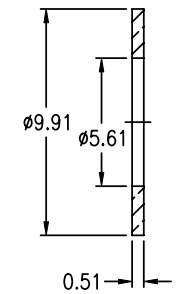
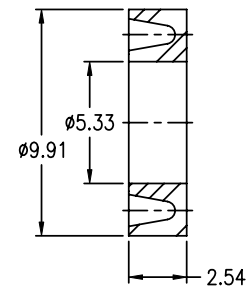
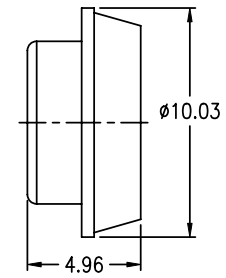
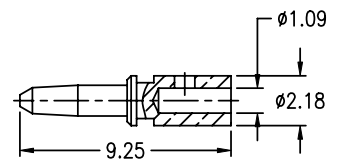
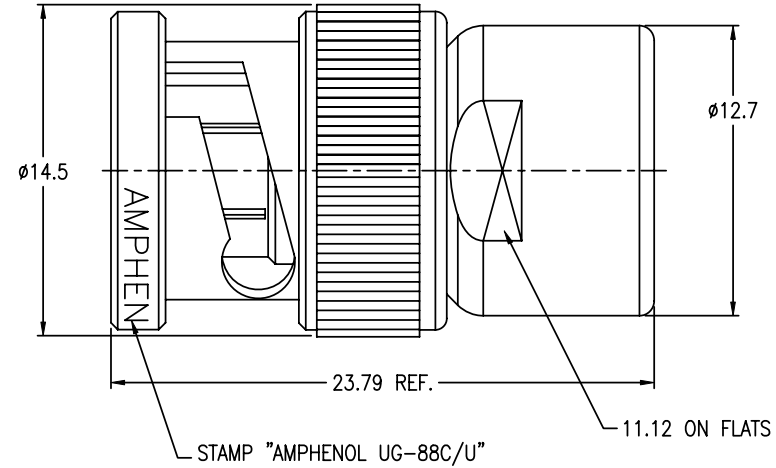
REVISIONS

REV	DESCRIPTION	DATE	ECO	APPR
A2	SEE SHEET 1	30-Oct-02	--	RICHER
B	SEE SHEET 1	28-Sep-06	--	MARK
AJ	REDRAWN TO UPDATE FORMAT	24-Dec-08	47242	SH
AK	SEE SHEET 1	12-Jun-09	47695	SH
AL	STAMP "AMPHENOL" WAS "74868" \RD-DM11120601R3		48843	

7/16-28UNEF-2A



RECOMMENDED  
CABLE STRIPPING DIM'S



**CUSTOMER OUTLINE DRAWING**  
ALL OTHER SHEETS ARE FOR INTERNAL USE ONLY

UNLESS OTHERWISE SPECIFIED, DIMENSIONS ARE IN METRIC AND TOLERANCES ARE: 0.5 - 6mm ±0.1mm    6 - 30mm ±0.2mm    30 - 120mm ±0.3mm    ANGLES ±1°	MATERIAL	DRAWN R.MAO	DATE 08-Feb-12	TITLE BNC PLUG UG-88C/U (FOR RG-58/U, 223/U, 142/U, 141/U)			Amphenol RF Danbury CT USA, Tainan Taiwan, Shenzhen China www.amphenolrf.com	
	REFERENCE	ENGINEER GEFFERY	DATE 28-Sep-06	SCALE: 3/1	SHEET 2 OF 2		DRAWING NO.	31-202
		APPROVED D.HU	DATE 08-Feb-12	DWG SIZE B	CODE ID 74868	REV AL	ITEM NO.	31-202
	FINISH	F:\DWG\CNPD\31\202-ALSZ					PART NO.	31-202

NOTICE - These drawings, specifications, or other data (1) are, and remain the property of Amphenol Corp. (2) must be returned upon request; and (3) are confidential and not to be disclosed to any person other than those to whom they are given by Amphenol Corp. The furnishing of these drawings, specifications, or other data by Amphenol Corp., or to any other person to anyone for any purpose is not to be regarded by implication or otherwise in any manner licensing, granting rights or permitting such holder or any other person to manufacture, use or sell any product, process or design, patented or otherwise, that may in any way be related to or disclosed by said drawings, specifications, or other data.