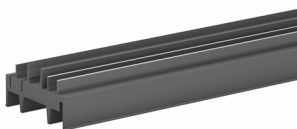
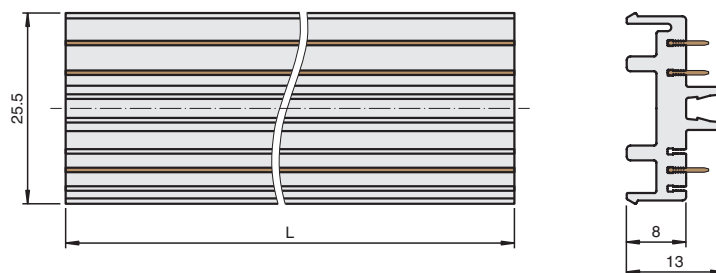


### Dimensions



### Technical data

#### Mechanical specifications

Material	Polycarbonate
Mass	approx. 440 g
Dimensions	13 x 25.5 x 2000 mm (0.5 x 1 x 78.7 in)
Mounting	in 35 mm DIN mounting rail acc. to EN 60715:2001

#### Accessories

Designation	- DIN mounting rail UPR-MR - end cap UPR-E - cover UPR-COVER
-------------	--------------------------------------------------------------------

### Features

- 3-conductor insert in 35 mm DIN mounting rail
- Suitable for 35 mm DIN mounting rail UPR-MR
- Suitable for profile rail K-DUCT
- Standard length 2 m (6 ft), simple to customize to application space

### Function

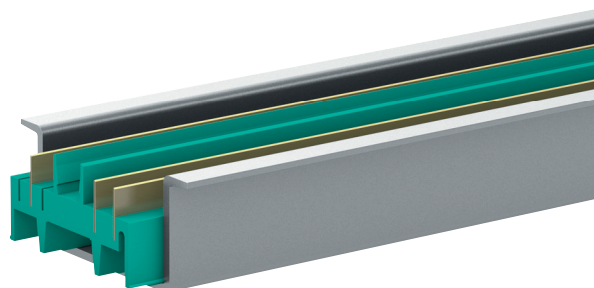
The insert consists of plastic and has integrated gold-plated conductors. The insert is installed into the DIN mounting rail UPR-MR.

The component has two conductors for power and one conductor for collective error messaging.

The component comes in 2 m segments but can be cut to any size.

The DIN mounting rail UPR-MR and the insert UPR-INS-\*\* form the Power Rail.

### Assembly



Release date 2013-06-25 16:28 Date of issue 2013-06-25 258157\_eng.xml