

# GN 113.5 | Ball lock pins

Stainless steel



- 1
- 2
- 3
- 4
- 5
- 6
- 7
- 8
- 9
- 10
- 11
- 12
- 13
- 14
- 15
- 16
- 17
- 18

## PIN AND PUSH BUTTON

AlSi 303 stainless steel.

## BALLS

AlSi 420C stainless steel.

## SPRING

Stainless steel.

## ROUND HANDLE

Glass-fibre reinforced polyamide based (PA) technopolymer, black and red colour, provided with holes for security ring

## WORKING TEMPERATURE

From -30°C to +80°C.

## FEATURES AND APPLICATIONS

GN 113.5 ball lock pins are generally used for quick fixation of components or parts to be machined, in particular for elements which need to be removed and reset continuously.

## ACCESSORIES ON REQUEST

To optimise the use of these ball lock pins, have been designed:

- Ball chains GN 111 (see page 611);
- retaining cables GN 111.2 (see page 612);
- Spiral retaining cables GN 111.4 (see page 613).

## SPECIAL EXECUTIONS ON REQUEST

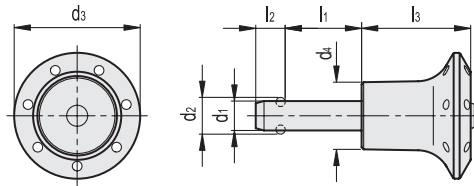
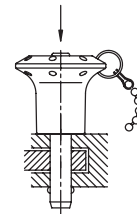
Other dimensions.

## INSTRUCTIONS OF USE

By pressing the push button the two balls are freed by exerting a radial retaining action which allows the pin to be engaged or disengaged.



Application example



Code	Description	d1-0.04-0.08	d2	d3	d4	l1+0.6	l2±0.2	l3-0.2	Mounting hole H11	Double sided shearing force [KN]	⚖️
GN.37951	GN 113.5-5-10	5	5.5	30	16	10	6	26	5	14	17
GN.37952	GN 113.5-5-15	5	5.5	30	16	15	6	26	5	14	20
GN.37953	GN 113.5-5-20	5	5.5	30	16	20	6	26	5	14	20
GN.37954	GN 113.5-5-25	5	5.5	30	16	25	6	26	5	14	20
GN.37955	GN 113.5-5-30	5	5.5	30	16	30	6	26	5	14	20
GN.37956	GN 113.5-6-10	6	7	30	16	10	7.1	26	6	21	20
GN.37957	GN 113.5-6-15	6	7	30	16	15	7.1	26	6	21	19
GN.37958	GN 113.5-6-20	6	7	30	16	20	7.1	26	6	21	20
GN.37959	GN 113.5-6-25	6	7	30	16	25	7.1	26	6	21	20
GN.37960	GN 113.5-6-30	6	7	30	16	30	7.1	26	6	21	23
GN.37961	GN 113.5-6-40	6	7	30	16	40	7.1	26	6	21	25
GN.37962	GN 113.5-8-20	8	9.5	35	19	20	8.2	32.5	8	38	42
GN.37963	GN 113.5-8-25	8	9.5	35	19	25	8.2	32.5	8	38	44
GN.37964	GN 113.5-8-30	8	9.5	35	19	30	8.2	32.5	8	38	50
GN.37965	GN 113.5-8-40	8	9.5	35	19	40	8.2	32.5	8	38	54
GN.37966	GN 113.5-8-50	8	9.5	35	19	50	8.2	32.5	8	38	54
GN.37967	GN 113.5-10-20	10	12	35	19	20	9.6	32.5	10	60	50
GN.37968	GN 113.5-10-25	10	12	35	19	25	9.6	32.5	10	60	52
GN.37969	GN 113.5-10-30	10	12	35	19	30	9.6	32.5	10	60	55
GN.37970	GN 113.5-10-40	10	12	35	19	40	9.6	32.5	10	60	61
GN.37971	GN 113.5-10-50	10	12	35	19	50	9.6	32.5	10	60	60
GN.37972	GN 113.5-12-25	12	14.5	42	25	25	10.6	39	12	87	100
GN.37973	GN 113.5-12-30	12	14.5	42	25	30	10.6	39	12	87	100
GN.37974	GN 113.5-12-40	12	14.5	42	25	40	10.6	39	12	87	100
GN.37975	GN 113.5-12-50	12	14.5	42	25	50	10.6	39	12	87	120
GN.37976	GN 113.5-12-60	12	14.5	42	25	60	10.6	39	12	87	130
GN.37977	GN 113.5-16-30	16	19	42	25	30	14	39	16	155	140
GN.37978	GN 113.5-16-40	16	19	42	25	40	14	39	16	155	151
GN.37979	GN 113.5-16-50	16	19	42	25	50	14	39	16	155	170
GN.37980	GN 113.5-16-60	16	19	42	25	60	14	39	16	155	160

Indexing and positioning elements