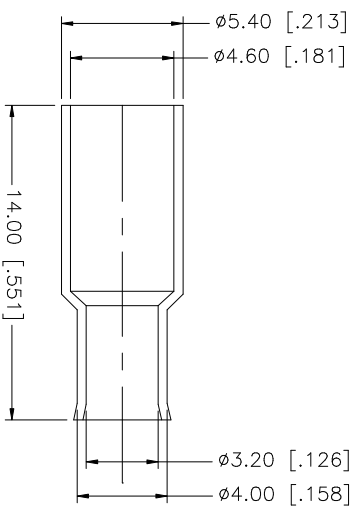
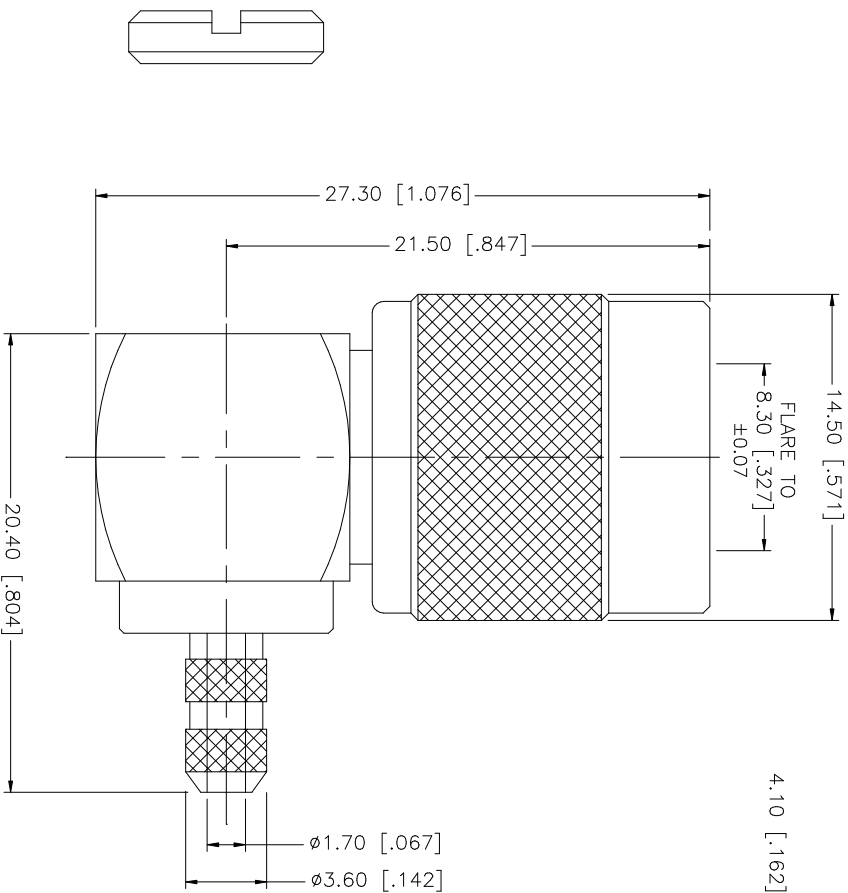
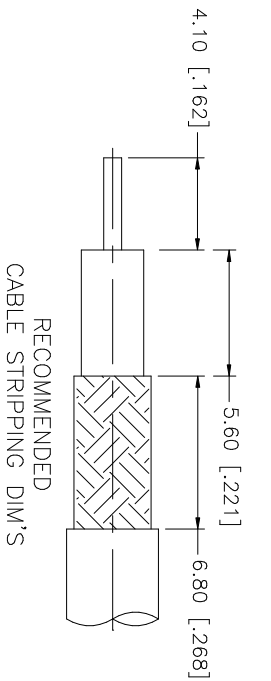


REV.	DATE	DESCRIPTION
A	03/18/05	UPDATE DRAWING FORMAT
B	05/09/06	MODIFY STRIPPING DIMENSIONS, MATERIAL AND PLATING



NO.	DESCRIPTION	MATERIAL	FINISH	QTY	DO NOT SCALE DRAWING	APPROVALS	DATE	PART DESCRIPTION	PART NO.	DWG. NO.	REV.	SIZE	SCALE	
8								<p style="text-align: center;"><b>Amphenol Connex</b></p> <p style="text-align: center;">TNC R/A CRIMP PLUG (FOR RG-316/U DOUBLE BRAID CABLE)</p>	122407	122407.DWG	B	A	NA	
7														
6	FERRULE	BRASS	NICKEL	1		DRAWN	G.R.S.							05/09/06
5	NUT	BRASS	NICKEL	1		CHECKED								
4	CONTACT PIN	BRASS	GOLD	1		ISSUED								
3	INSULATOR	TEFLON	NATURAL	1		SHEET	1 OF 1							
2	HOUSING/SHELL	BRASS	NICKEL	1										
1	DESCRIPTION													

UNLESS OTHERWISE SPECIFIED, DIMENSIONS ARE IN MILLIMETERS. DIMENSIONS IN [ ] ARE IN INCHES AND FOR CUSTOMER REFERENCE ONLY.

UNLESS OTHERWISE SPECIFIED, TOLERANCES FOR MILLIMETERS ARE:

0.5 - 8mm ± 0.20mm  
8 - 30mm ± 0.40mm  
30 - 120mm ± 0.50mm

UNLESS OTHERWISE SPECIFIED, TOLERANCES FOR INCHES ARE:

.020 - .315 = ± 0.007"  
.315 - 1.180 = ± 0.015"  
1.180 - 4.724 = ± 0.020"

NO.	DESCRIPTION	MATERIAL	FINISH	QTY	DO NOT SCALE DRAWING
8					
7					
6	FERRULE	BRASS	NICKEL	1	
5	NUT	BRASS	NICKEL	1	
4	CONTACT PIN	BRASS	GOLD	1	
3	INSULATOR	TEFLON	NATURAL	1	
2	HOUSING/SHELL	BRASS	NICKEL	1	
1	DESCRIPTION				

NO.	DESCRIPTION	MATERIAL	FINISH	QTY	DO NOT SCALE DRAWING
8					
7					
6	FERRULE	BRASS	NICKEL	1	
5	NUT	BRASS	NICKEL	1	
4	CONTACT PIN	BRASS	GOLD	1	
3	INSULATOR	TEFLON	NATURAL	1	
2	HOUSING/SHELL	BRASS	NICKEL	1	
1	DESCRIPTION				