



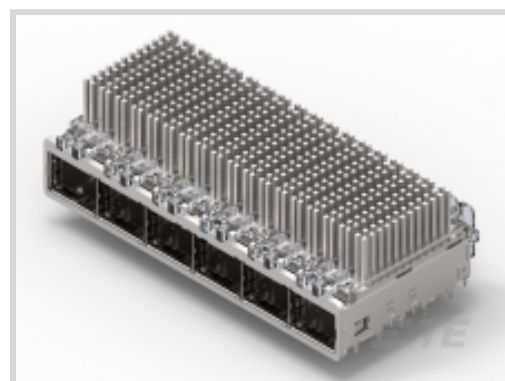
## QSFP/QSFP+

TE Internal #: 2143331-3

QSFP/QSFP+, QSFP/QSFP+/zQSFP+, Cage Assembly, Port Matrix Configuration 1 x 6, Customer Applied Gasket, Included Lightpipe, Standard

[View on TE.com >](#)

Connectors > Pluggable IO Connectors & Cages > QSFP/QSFP+/zQSFP+



Pluggable I/O Product Type: **Cage Assembly**

Port Matrix Configuration: **1 x 6**

EMI Containment Feature Type: **Customer Applied Gasket**

Thermal Accessory Type Included: **Heat Sink**

Included Lightpipe: **Yes**

## Features

### Product Type Features

|                                   |                       |
|-----------------------------------|-----------------------|
| Form Factor                       | QSFP+                 |
| Cage Type                         | Ganged                |
| Pluggable I/O Product Type        | Cage Assembly         |
| Thermal Accessory Type Included   | Heat Sink             |
| Connector System                  | Cable-to-Board        |
| Sealable                          | No                    |
| Connector & Contact Terminates To | Printed Circuit Board |

### Configuration Features

|                                     |             |
|-------------------------------------|-------------|
| Port Matrix Configuration           | 1 x 6       |
| Number of Ports                     | 6           |
| Lightpipe Configuration             | Dual Square |
| Number of Rear EONs per Port Column | 1           |

### Electrical Characteristics

|                 |         |
|-----------------|---------|
| Data Rate (Max) | 14 Gb/s |
|-----------------|---------|

### Body Features

|                  |                |
|------------------|----------------|
| Heat Sink Finish | Anodized Black |
| Heat Sink Style  | Pin            |



|                        |            |
|------------------------|------------|
| Heat Sink Height Class | Networking |
|------------------------|------------|

|                  |                  |
|------------------|------------------|
| Heat Sink Height | 13.5 mm[.531 in] |
|------------------|------------------|

### Contact Features

|   |     |
|---|-----|
| PCB Contact Termination Area Plating Material | Tin |
|---|-----|

### Termination Features

|   |                          |
|---|--------------------------|
| Termination Method to Printed Circuit Board | Through Hole - Press-Fit |
|---|--------------------------|

### Mechanical Attachment

|                         |             |
|-------------------------|-------------|
| Connector Mounting Type | Board Mount |
|-------------------------|-------------|

### Housing Features

|               |               |
|---------------|---------------|
| Cage Material | Nickel Silver |
|---------------|---------------|

### Dimensions

|             |                 |
|-------------|-----------------|
| Tail Length | 2.2 mm[.086 in] |
|-------------|-----------------|

|                             |                  |
|-----------------------------|------------------|
| PCB Thickness (Recommended) | 1.45 mm[.057 in] |
|-----------------------------|------------------|

### Usage Conditions

|                             |                            |
|-----------------------------|----------------------------|
| Operating Temperature Range | -55 – 105 °C[-67 – 221 °F] |
|-----------------------------|----------------------------|

### Operation/Application

|                                     |  |
|-------------------------------------|--|
| For Use With Pluggable I/O Products | QSFP Cable Assembly, QSFP MSA Compatible Transceiver |
|-------------------------------------|--|

|                            |                             |
|----------------------------|-----------------------------|
| Pluggable I/O Applications | SFP+ Stacked Belly-to-Belly |
|----------------------------|-----------------------------|

|                     |        |
|---------------------|--------|
| Circuit Application | Signal |
|---------------------|--------|

### Industry Standards

|                        |          |
|------------------------|----------|
| UL Flammability Rating | UL 94V-0 |
|------------------------|----------|

### Packaging Features

|                  |            |
|------------------|------------|
| Packaging Method | Box & Tray |
|------------------|------------|

### Other

|                              |                         |
|------------------------------|-------------------------|
| EMI Containment Feature Type | Customer Applied Gasket |
|------------------------------|-------------------------|

|                    |     |
|--------------------|-----|
| Included Lightpipe | Yes |
|--------------------|-----|

|              |          |
|--------------|----------|
| Enhancements | Standard |
|--------------|----------|

### Product Compliance

[For compliance documentation, visit the product page on TE.com>](#)

|                              |                  |
|------------------------------|------------------|
| EU RoHS Directive 2011/65/EU | Not Yet Reviewed |
|------------------------------|------------------|



|   |   |
|---|---|
| EU ELV Directive 2000/53/EC                   | Compliant   |
| China RoHS 2 Directive MIIT Order No 32, 2016 | No Restricted Materials Above Threshold                         |
| EU REACH Regulation (EC) No. 1907/2006        | Current ECHA Candidate List: JAN 2021 (211)<br>Not Yet Reviewed |
| Halogen Content                               | Out of Scope - excluded from Halogen requirements               |
| Solder Process Capability                     | Not applicable for solder process capability                    |

Product Compliance Disclaimer

This information is provided based on reasonable inquiry of our suppliers and represents our current actual knowledge based on the information they provided. This information is subject to change. The part numbers that TE has identified as EU RoHS compliant have a maximum concentration of 0.1% by weight in homogenous materials for lead, hexavalent chromium, mercury, PBB, PBDE, DBP, BBP, DEHP, DIBP, and 0.01% for cadmium, or qualify for an exemption to these limits as defined in the Annexes of Directive 2011/65/EU (RoHS2). Finished electrical and electronic equipment products will be CE marked as required by Directive 2011/65/EU. Components may not be CE marked. Additionally, the part numbers that TE has identified as EU ELV compliant have a maximum concentration of 0.1% by weight in homogenous materials for lead, hexavalent chromium, and mercury, and 0.01% for cadmium, or qualify for an exemption to these limits as defined in the Annexes of Directive 2000/53/EC (ELV). Regarding the REACH Regulations, TE's information on SVHC in articles for this part number is still based on the European Chemical Agency (ECHA) 'Guidance on requirements for substances in articles' (Version: 2, April 2011), applying the 0.1% weight on weight concentration threshold at the finished product level. TE is aware of the European Court of Justice ruling of September 10th, 2015 also known as O5A (Once An Article Always An Article) stating that, in case of 'complex object', the threshold for a SVHC must be applied to both the product as a whole and simultaneously to each of the articles forming part of its composition. TE has evaluated this ruling based on the new ECHA "Guidance on requirements for substances in articles" (June 2017, version 4.0) and will be updating its statements accordingly.

## Compatible Parts



TE Part # CAT-C11-H50114  
QSFP to QSFP I/O Cable Assembly: 30 AWG



TE Part # 2110819-1  
QSFP+ Enh EVERCLEAR PT Conn



TE Part # 1888810-2  
EMI/Dust Cover, XFP And QSFP



TE Part # CAT-C11-H50111  
QSFP-Four SFP+ I/O Cable Assembly 30 AWG



TE Part # 2821309-4  
QSFP TO [2]QSFP, 28G, 3 METER, 30AWG



TE Part # 2821309-7  
QSFP TO [2]QSFP, 28G, 1 METER, 33AWG



TE Part # 2821309-8  
QSFP TO [2]QSFP, 28G, 3 METER, 28AWG



TE Part # 2821309-3  
QSFP TO [2]QSFP, 28G, 3 METER, 26AWG



TE Part # 2821309-5  
QSFP TO [2]QSFP+, 28G, 2 METER, 26AWG



TE Part # 2821309-9  
QSFP TO [2]QSFP+, 28G, 5 METER, 26AWG



TE Part # 2202165-5  
QSFP TO QSFP, 26AWG, FDR, 5.0 METER



TE Part # 2821309-2  
QSFP TO [2]QSFP+, 28G, 2 METER, 30AWG



TE Part # 2829040-2  
QSFP IB EDR, 33AWG, 1.0M



TE Part # 2829040-4  
QSFP IB EDR, 30AWG, 1.0M



TE Part # 2829040-6  
QSFP IB EDR, 30AWG, 2.0M



TE Part # 2829040-7  
QSFP IB EDR, 26AWG, 2.0M

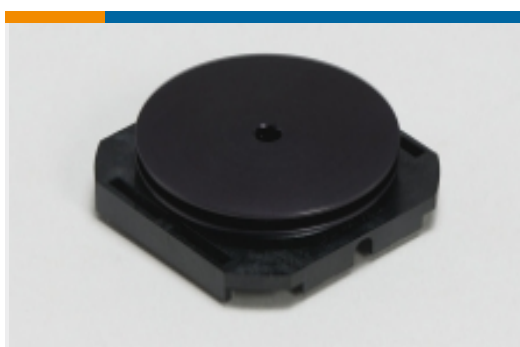


TE Part # 2829040-8  
QSFP IB EDR, 26AWG, 3.0M



TE Part # 2821033-8  
QSFP TO [4]SFP+, 28G, 1M, 33AWG

Also in the Series | **QSFP/QSFP+**



Heat Sinks(1)



Pluggable I/O Cable Assemblies(33)



QSFP/QSFP+/zQSFP+(168)

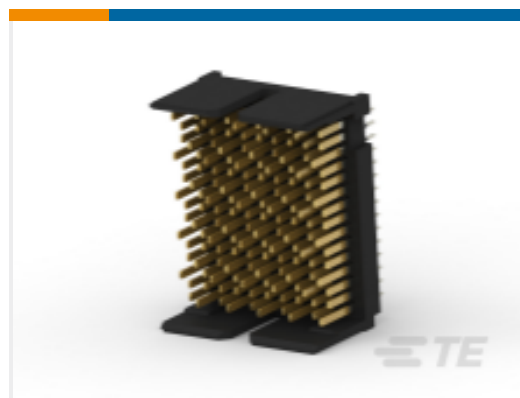
Customers Also Bought



TE Part #2170872-1  
Hard Metric Male Connector:  
Traditional Backplane, Mezzanine,  
2mm



TE Part #2-1658063-3  
MSB0.80PL5ASY120FL,-,10,-TY



TE Part #1934937-1  
Tinman 5pr 10col open hdr assy



TE Part #2-1734774-1  
PCI EXP 3.1L 98 POS WHT 30u"



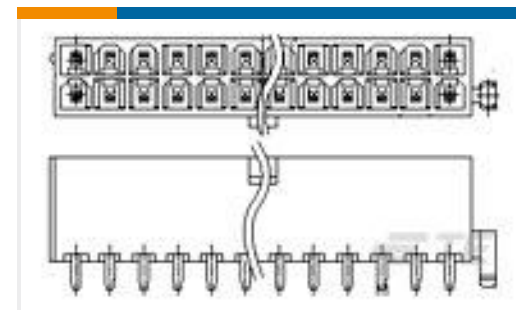
TE Part #2007850-1  
IMP100S,H,V5P10C,UG,DEW46,4,5



TE Part #2132423-1  
IMP100O,R,RA3P6C,RG,39



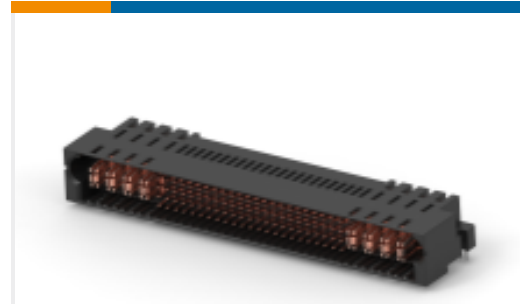
TE Part #2204400-4  
MULTI-BEAM HD R/A REC.  
15S+3P+3P+15S



TE Part #3-1775099-2  
ATX PWR CONN 1 BDLK 8 POS



TE Part #6-1658043-2  
MSB0.80RC-ASY080FL,GP,F,-TR



TE Part #2-2204910-5  
MBXLE R/A HEADER 4HDP + 92S +  
4HDP

## Documents

### Product Drawings

1x6 QSFP Kit Assy Sqr LP, Networking HS

English

### CAD Files

3D PDF

3D

Customer View Model

[ENG\\_CVM\\_CVM\\_2143331-3\\_A.2d\\_dxf.zip](#)

English

Customer View Model

[ENG\\_CVM\\_CVM\\_2143331-3\\_A.3d\\_igs.zip](#)

English

Customer View Model

[ENG\\_CVM\\_CVM\\_2143331-3\\_A.3d\\_stp.zip](#)

English

By downloading the CAD file I accept and agree to the [Terms and Conditions](#) of use.

### Product Specifications

Application Specification

English