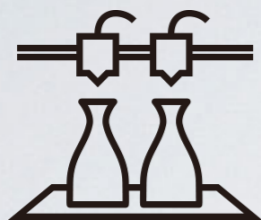
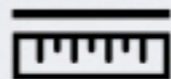


Creator 3

Creator 3 for larger build size, higher speed, and capable of printing water-soluble support with independent dual extruder.



Independent dual extruder



Accuracy of $\pm 0.2\text{mm}$



300*250*200mm



120 °C heating plate



300 °C heating Nozzle



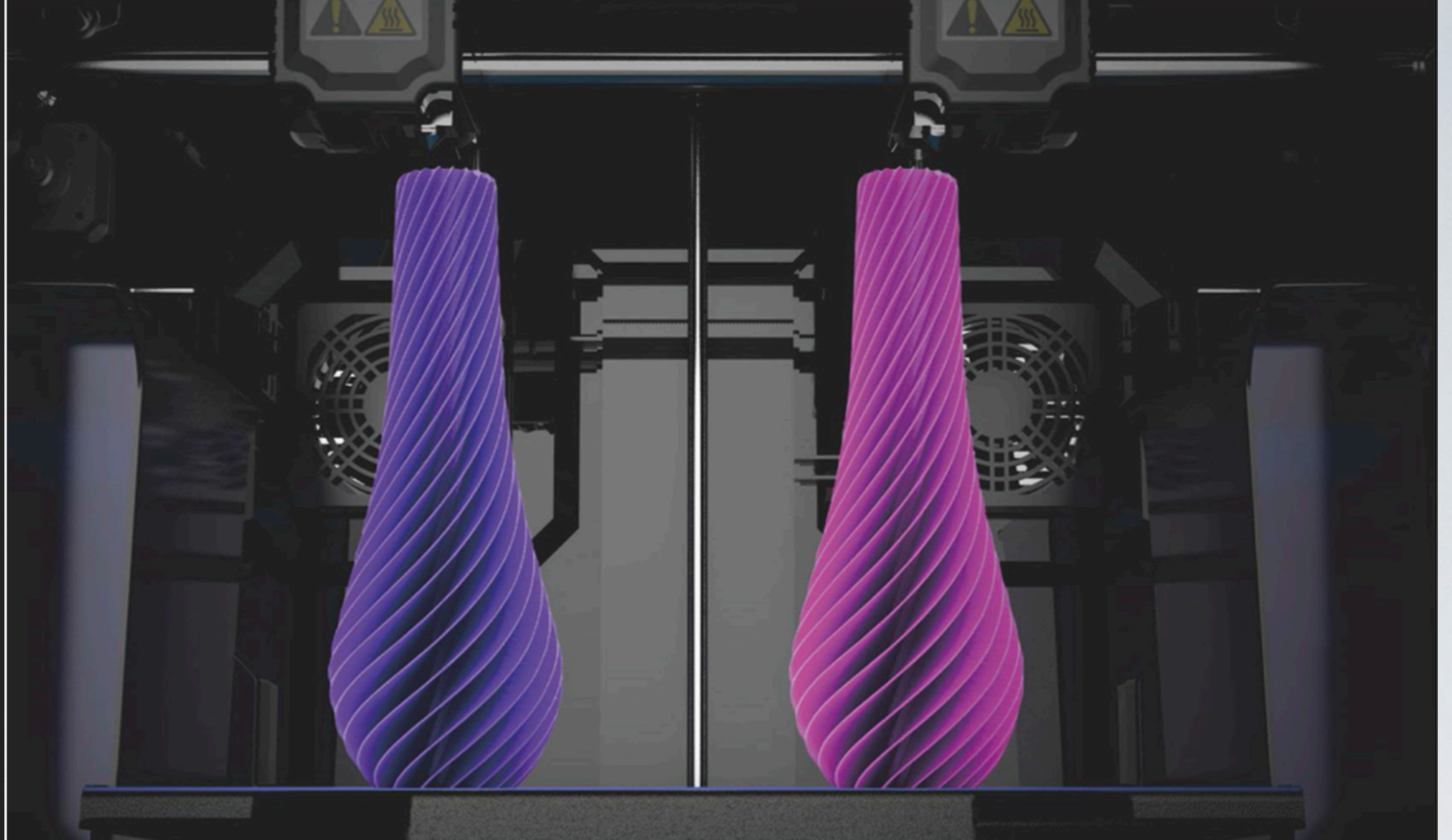
Wide range of materials



Flashprint software



Cloud



X2 output

300 °C

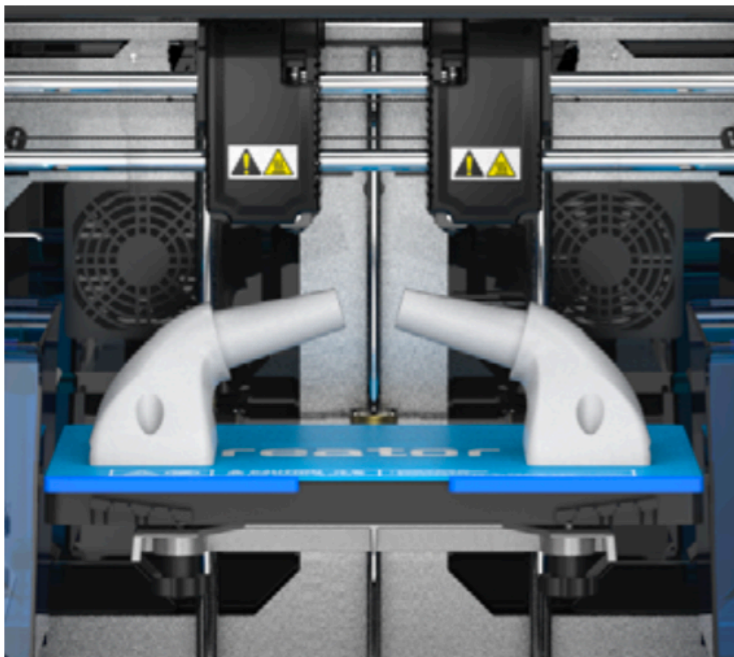
INDEPENDENT DUAL EXTRUDER

Double efficiency of the Mirror Printing. Creator 3 make it come true that more complicated prints can be printed perfectly with independent dual extrusion and water-soluble filament. Make the impossible possible and achieve the expected printing effect.

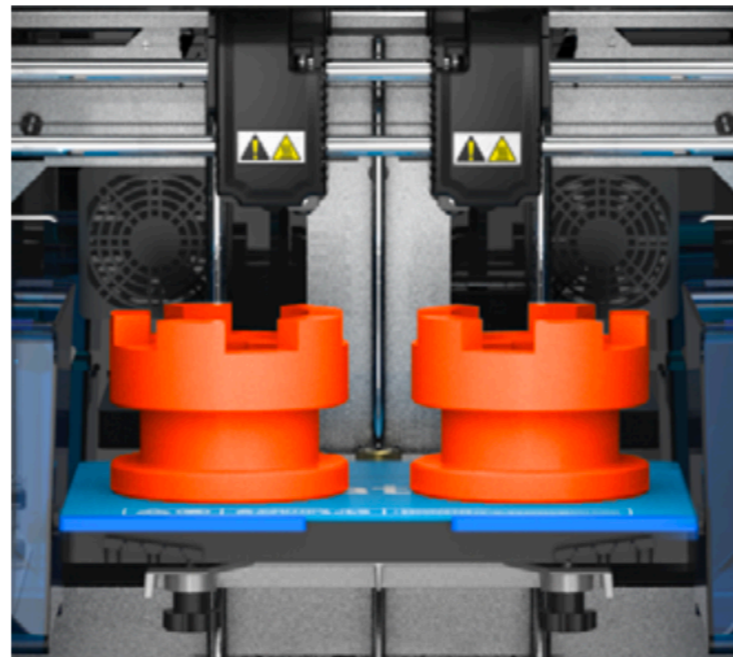
Integrated Nozzle design support 300 degree heating temperature. Wide range of materials allow printing according to users' need and achieve perfect print effect.

Independent dual-extruder system support multi-printing mode

Mirror mode



Duplication mode



Two-color mode

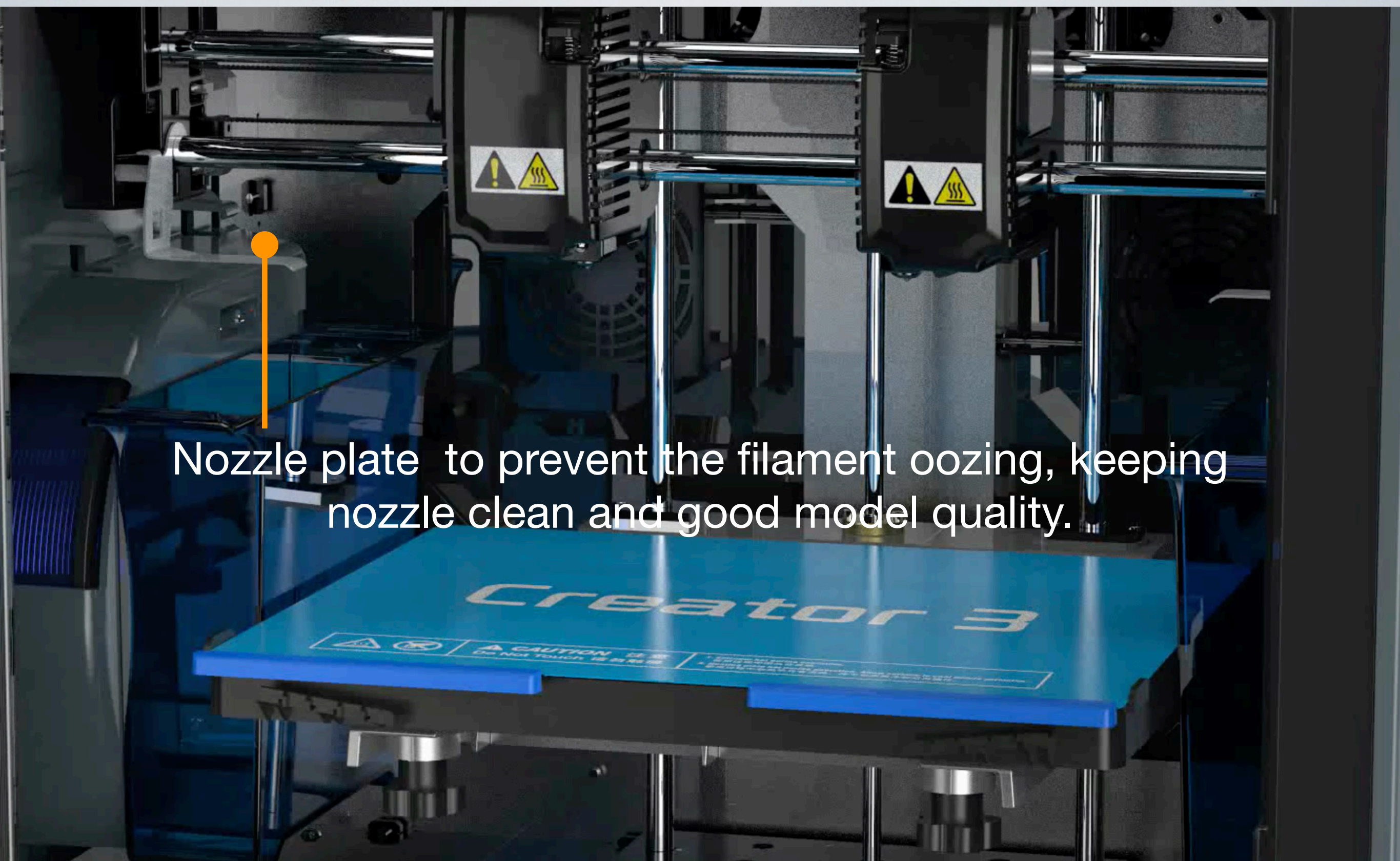


INTELLIGENT LEVELING

with extruder sensor

Totally automatic Z-axis calibration. You just click on the screen, the device will run automatically and the program will record the height data of left and right extruder. The plate leveling is exceedingly simple because of nozzle sensor and visualization tips.





Nozzle plate to prevent the filament oozing, keeping nozzle clean and good model quality.

FLEXIBLE BUILD PLATE

 FLASHFORGE

120 °C

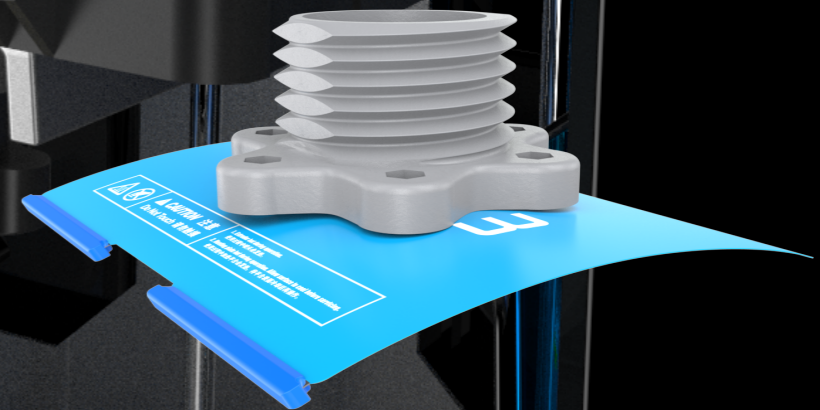
Heating Plate


300*250*200 mm

Build Volume

Easy remove/ Easy installation/ Better flatness

Magnetic suction installation is effortless; the entire CNC aluminum plate support surface provides better flatness



A close-up, low-angle shot of a printer's internal mechanism. The image is dominated by dark, metallic-looking components. In the center-left, a circular camera lens with a blue tint is visible. To the right, a print head assembly is partially visible, showing a nozzle and a small white component. The lighting is dramatic, highlighting the textures and shapes of the machinery.

The build-in camera helps to keep an eye on prints in case of incorrect settings, and helps to pause or abort printing via Wi-Fi by cloud.

4.5 inches touch screen

- Adjustable LED lights ensure an optimized 3D printing experience in any environment.
- Air Filter
- Filament detection



FLASHFORGE

**FLASHFORGE
3D PRINTER**



CAUTION 注意
Do Not Touch 请勿触摸

1. Extruder hot during operation.
使用过程中喷头会发热。
2. Heating plate hot during operation.
使用过程中加热平台会发热。

CREATOR 3

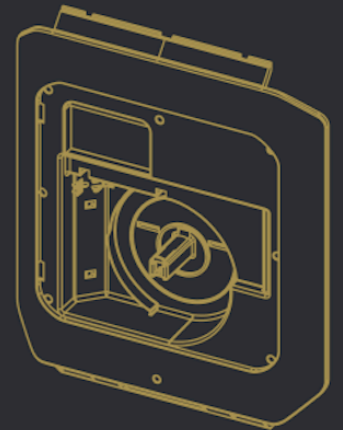
FILAMENT SPOOL HOLDER UPDATE



FLASHFORGE
3D PRINTER

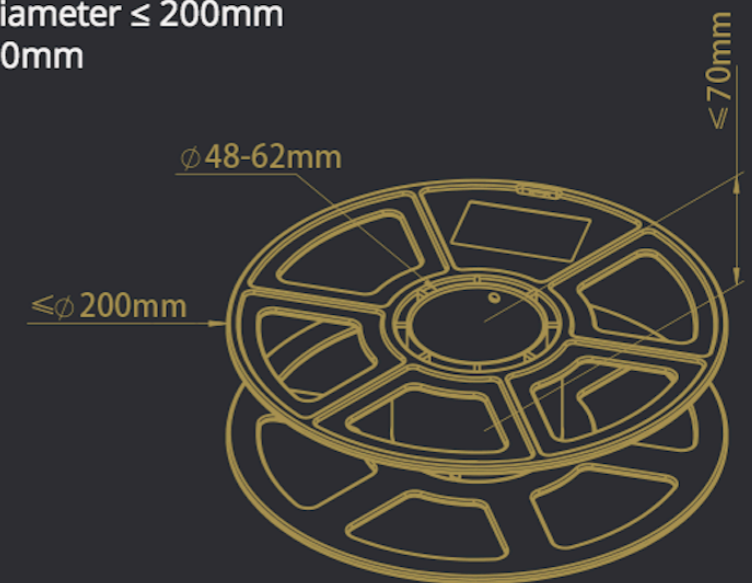
SUPPORT

SPOOL SIZE (1KG)



SPOOL HOLE:

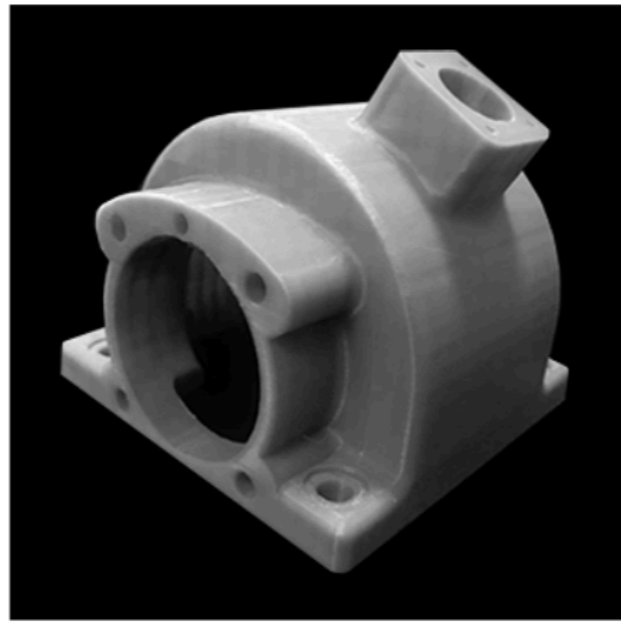
48mm < Spool hole < 62mm
External diameter ≤ 200mm
Height ≤ 70mm



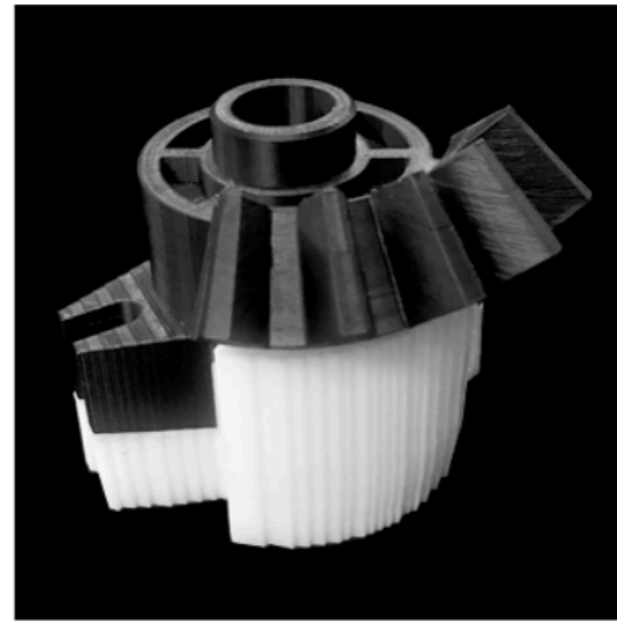
It is able to support different size of spool hole



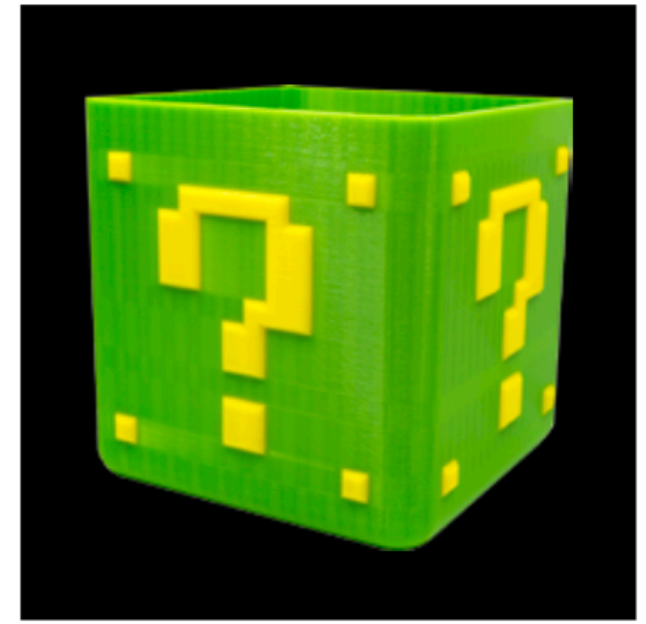
PC



PLA+PVA



ABS+HIPS



PLA+PLA

Suitable for

Nylon	PLA	ABS	PVA	PETG	PC	PP	HIPS
-------	-----	-----	-----	------	----	----	------

Combination

Pacf and pagf is able to print, but it will short the nozzle life

Left extruder

Right extruder

PVA

Nylon

HIPS

ABS

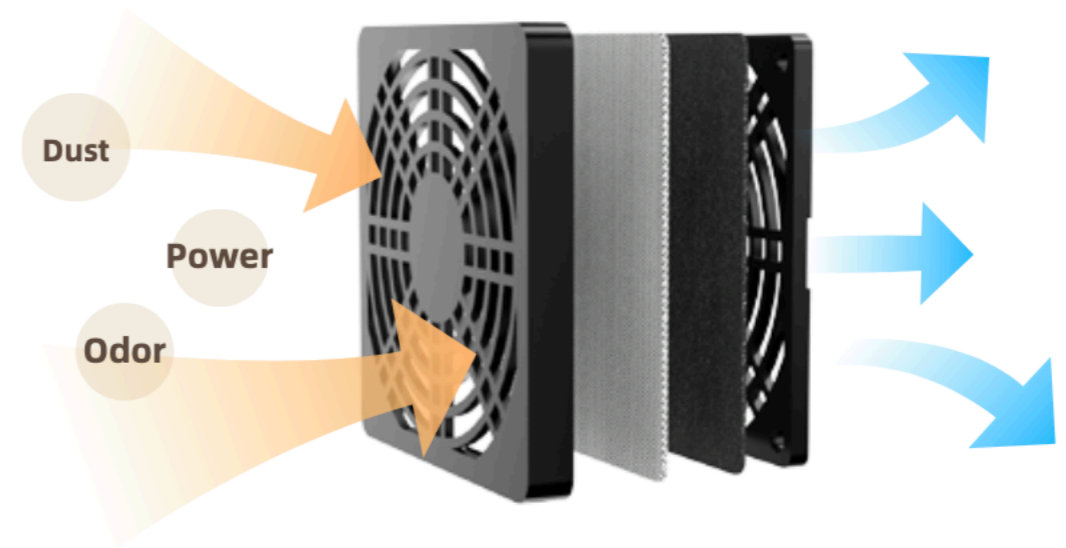
PVA

PLA

//FILAMENT

Four built-in ventilating fans

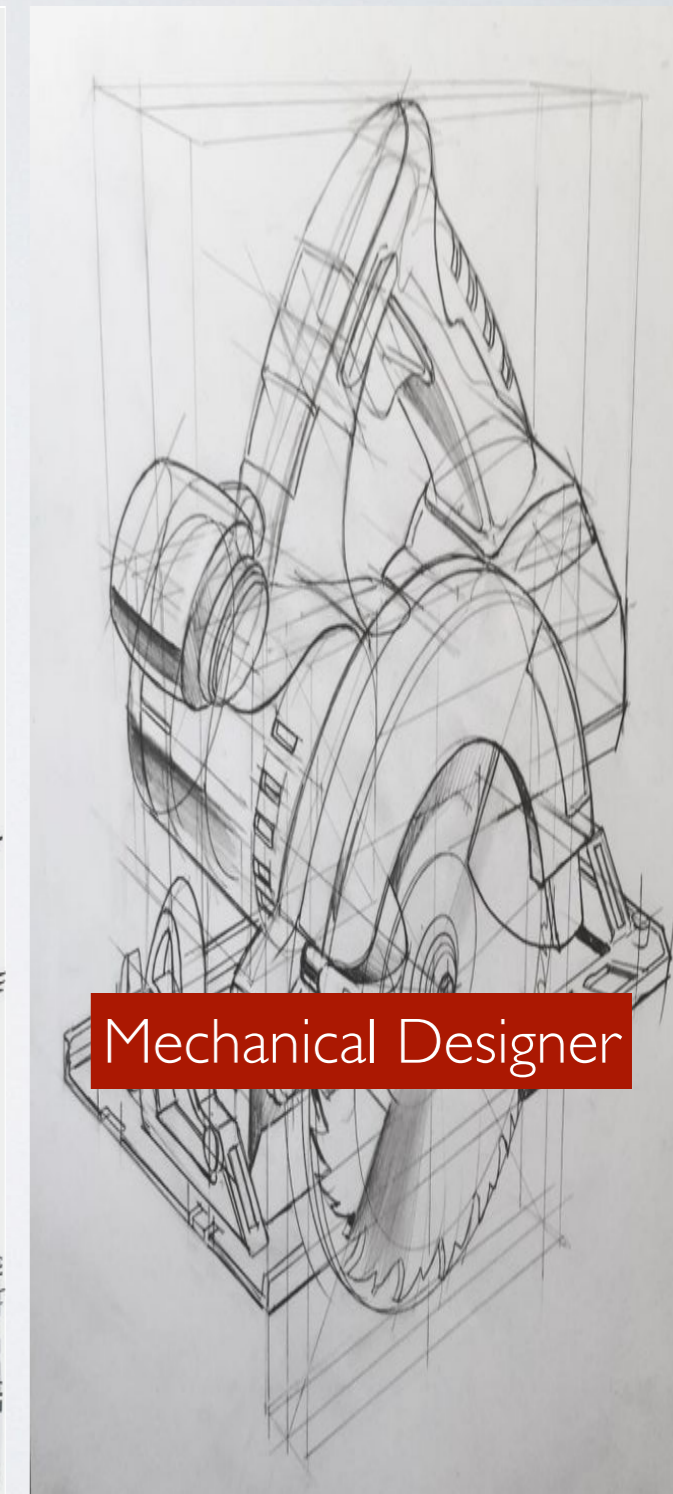
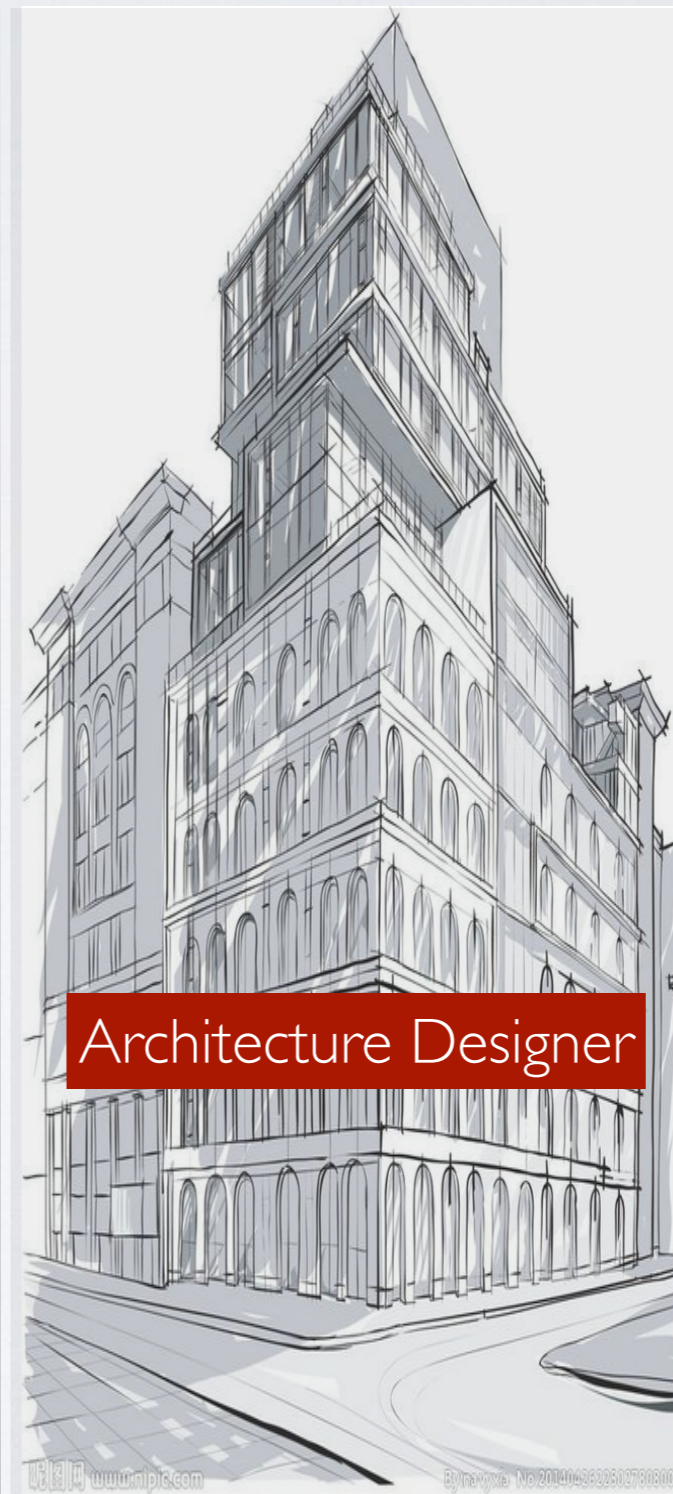
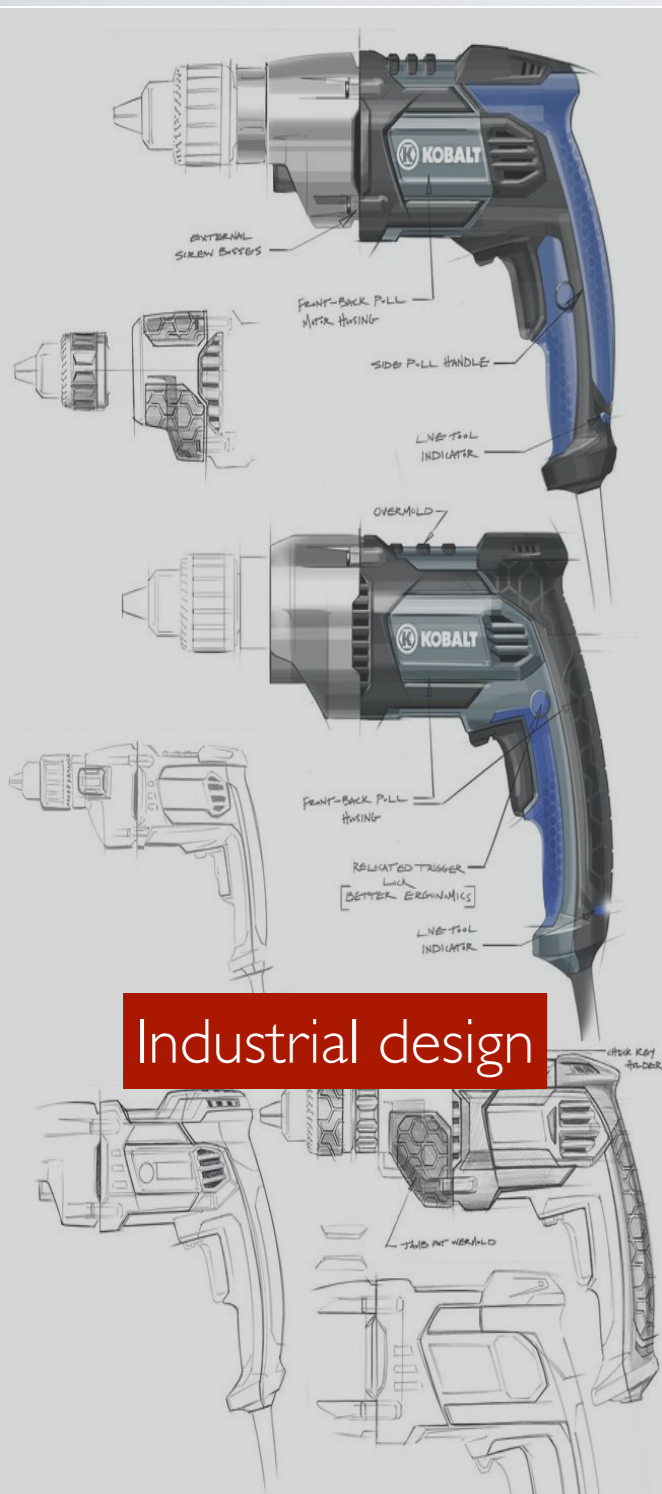
Displacing the internal and external air to adjust the temperature of the chamber to create a better printing environment temperature.



Hepa h13 filter and activated carbon filter cotton can effectively filter fine dust. Filtration efficiency **>95%**.
(Hepa filter is optional)

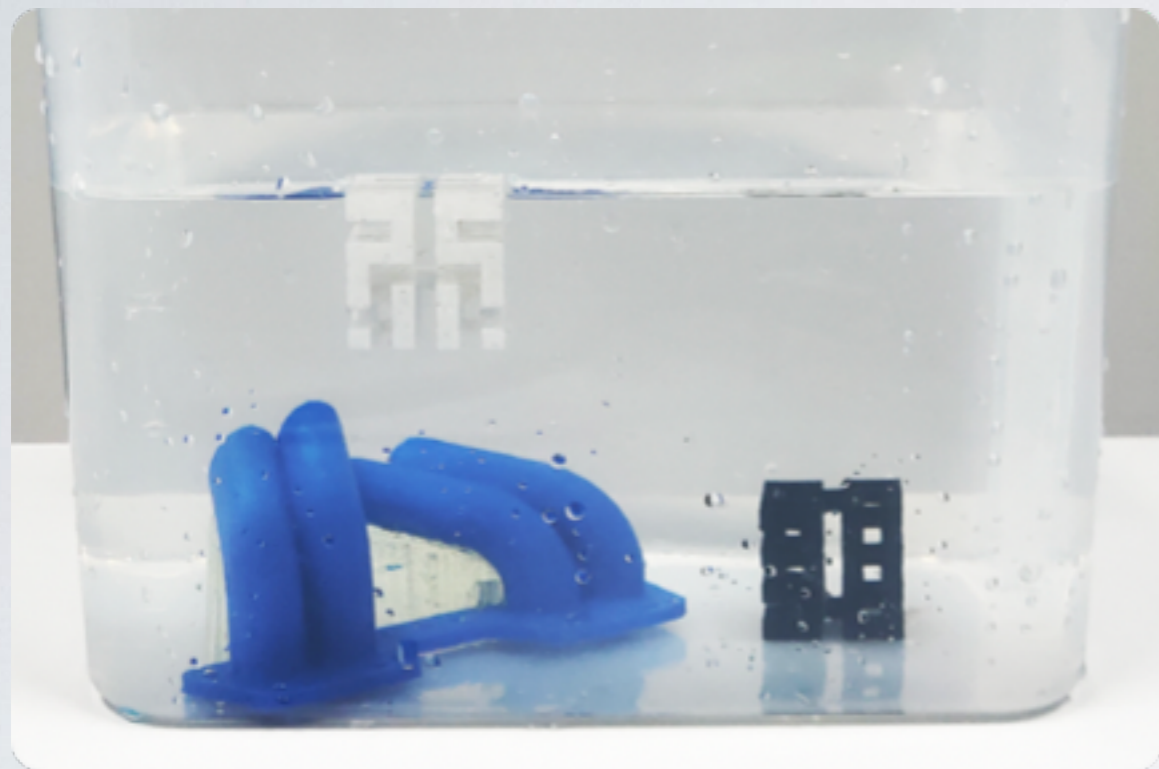
www.flashforge.com

APPLICATIONS

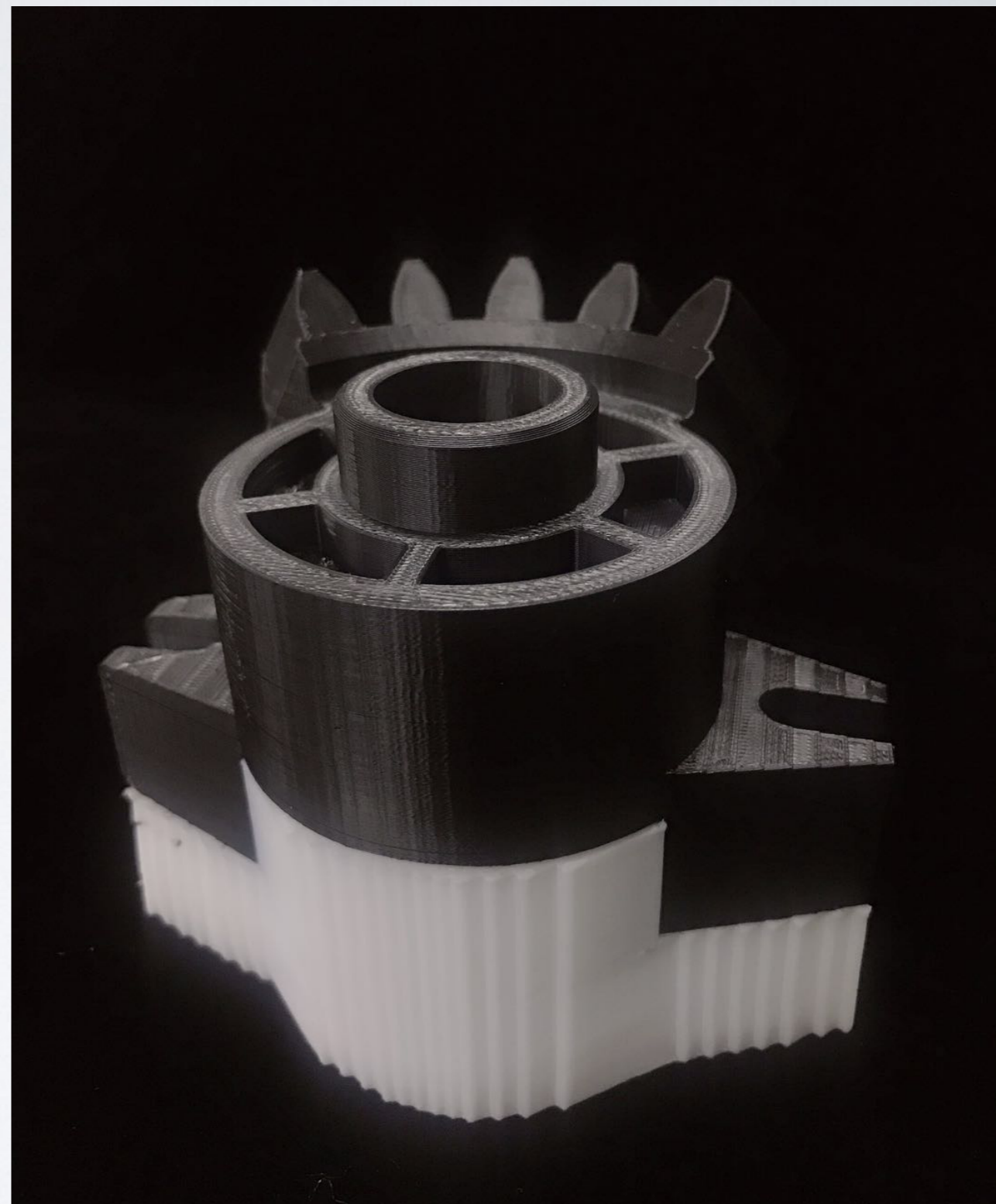


MODELS

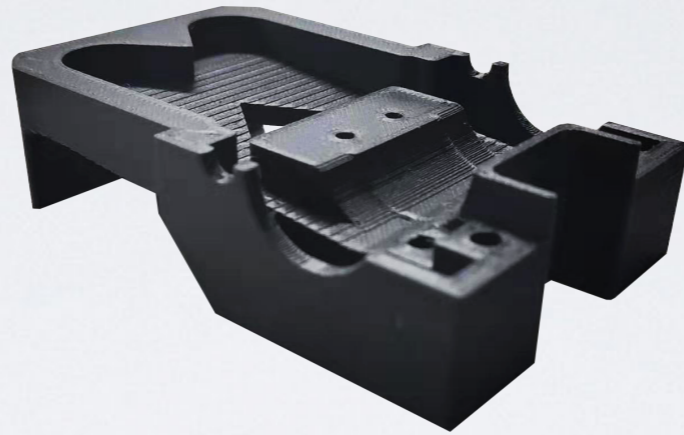
PVA+PLA



PLA+PLA



HIPS+ABS



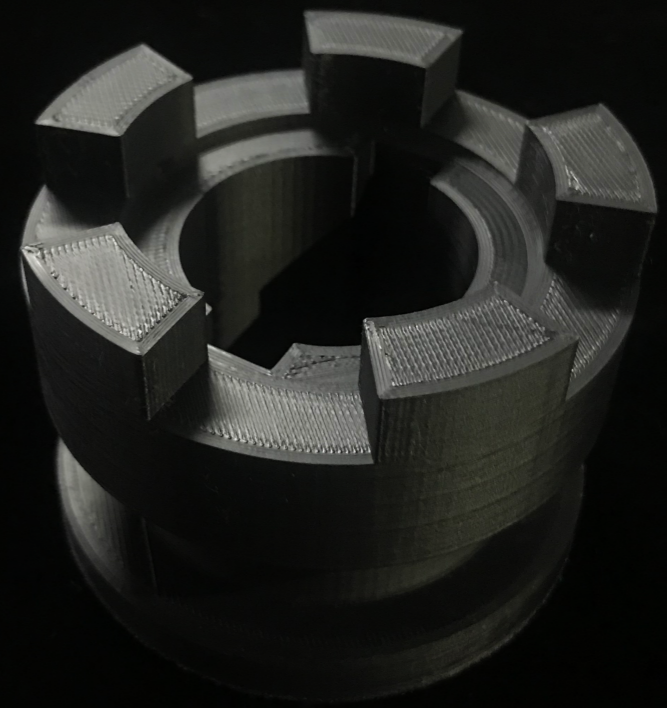
PA-CF

PC





PA-GF



ASA

SPECIFICATION

▲ Print

Build volume:	300*250*200mm
Nozzle temperature:	300°C
Nozzle number:	2, Independent
Nozzle diameter:	0.4mm
Build plate temperature:	Up to 120 °C
Print speed:	10-150mm/s

▲ Material

PLA
ABS
PVA
WOOD
HIPS
PA
PC
PP

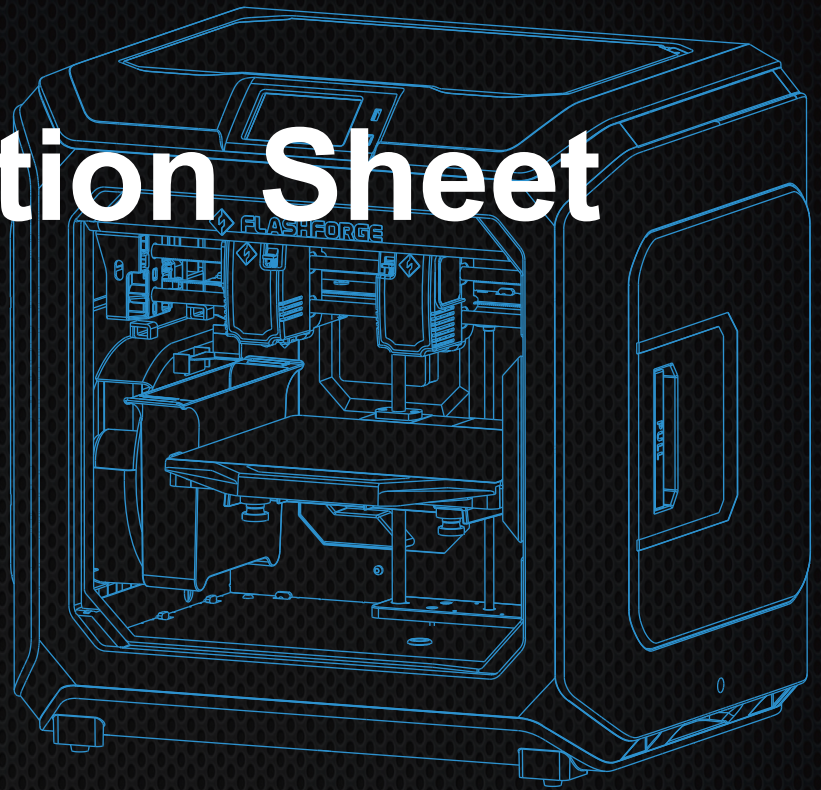
▲ Device

Screen :	4.5inches touch screen
Power :	100-240VAC, 48-63Hz, 500W
Dimensions:	627*485*615mm
Net weight:	40kg

▲ Software

Software:	Flashprint
System:	Win 7/8/10、 Mac OS、 Linux
File type:	Input: 3MF/STL/OBJ/FPP/BMP/PNG/ JPG/JPEG Output: g/.gx
Communication:	USB stick; Wi-Fi; ethernet
Cloud :	Flash cloud;

Creator 3 Specification Sheet



► Print

Technology	Fused Filament Fabrication (FFF)
Build volume	300×250×200mm
Filament diameter	1.75mm
Layer resolution	0.05 - 0.4mm
XYZ resolution	Z axis 0.0025mm; XY axis 0.011mm
Screen	4.5inch full color touch screen

► Build Plate Nozzle

Build speed	10-200mm/s
Build plate	Flexible build plate
Build plate temperature	Up to 120 °C
Build plate leveling	Auto XYZ calibration, leveling with sensor
Nozzle diameter	0.4mm
Nozzle temperature	300 °C

▶ Communication

Connectivity	USB Stick, WiFi, Ethernet
Software	FlashPrint
Cloud	FlashCloud, Polar cloud
System	MacOS, Windows, and Linux
File types	STL, OBJ, X3D, 3MF, BMP, GIF, JPG, PNG Printable formats: .g/.gx

▶ Material

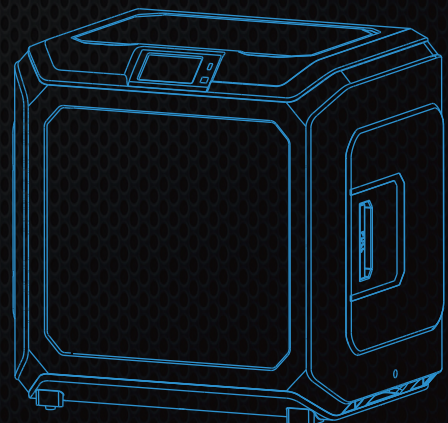
Support material	PVA+PLA / HIPS+ABS / WOOD / PC / PA / PETG
------------------	--

▶ Device

Dimensions	627*485*615mm
Net weight	45kg
Shipping weight	52kg
Required input	100-240 VAC,47-63Hz, Power: 500W
Operating ambient temperature	15-30°C 10 - 90% RH non-condensing
Non-operating temperature	0-32°C

▶ Warranty/Service

Warranty period	12 Month
Technical support	Lifetime technical support from Flashforge's global network of certified service partners support@ff3dp.com





Creator 3



Dupont PA-CF



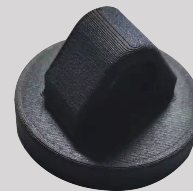
258-265°C



90-95°C



Note: The nozzle may be wore out if printing PA-CF filament for a long time.
You may need to replace the nozzle and filament feeding gear.





Creator 3



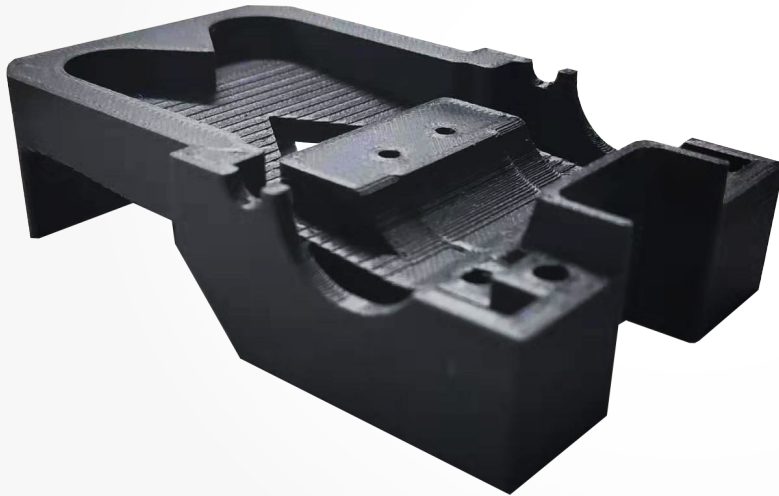
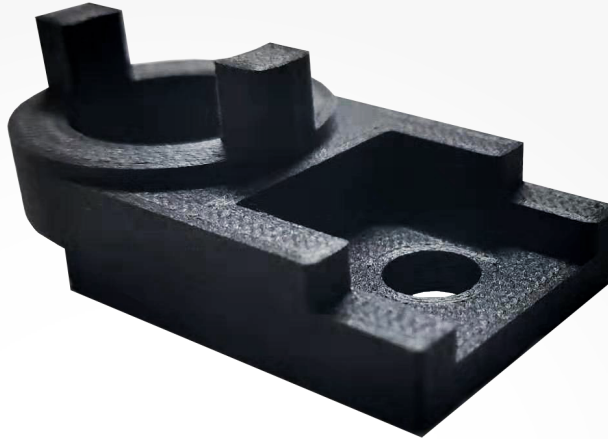
Dupont PA-CF



258-265°C



90-95°C



Note: The nozzle may be wore out if printing PA-CF filament for a long time.
You may need to replace the nozzle and filament feeding gear.



Creator 3



Flashforge PA-CF



258-265°C



90-95°C



Note: The nozzle may be wore out if printing PA-CF filament for a long time.
You may need to replace the nozzle and filament feeding gear.



Creator 3



Esun PA-CF



225-230°C



90°C



Note: The nozzle may be wore out if printing PA-CF filament for a long time.
You may need to replace the nozzle and filament feeding gear.