



# Product Change Notification

<b>Date Issued :</b>	February 28, 2022	<b>PCN Number :</b>	511200
<b>Reason for Change :</b>	Change Supplier		
<b>Description of Change :</b>	Supplier change from Polyplastics to WOTE and resin LCP 30% GF BLACK UL94V-0 unchanged Reason: Polyplastics don't give Molex Shanghai any volume in CY22 Q2 due to capacity shortage, we need to qualify local LCP supplier Wote to meet ramp-up demand Impact: Resin 899920212 (POLYPLASTICS - LAPEROS E130I - BLACK) Implement change: Validation of supplier change"		
<b>Reason for Short Notice :</b>	Special Request		
<b>Assessment of Change :</b>	First Article Inspection		
<b>Planned Implementation Date :</b>	March 28, 2022		
<b>Sample Availability Date:</b>	March 10, 2022		
<b>Internal Molex Qualification Date :</b>	March 15, 2022		
<b>Last date to request Samples by Customer :</b>	March 15, 2022		
<b>Traceability Code Markings / Date :</b>	Date code		

Before Picture

## Product Picture



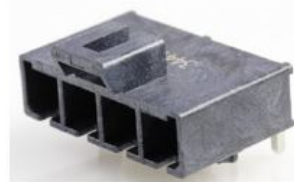
Mega-fit Dual row vertical:  
76829/172065



Mega-fit Dual row right angle :  
76829/172065



Mega-fit Single row vertical:  
200241-11\*\*



Mega-fit Dual row right angle :  
200241-12\*\*

After Picture

## CFD

- Due to existing resin supplier Polyplastics capacity constraint issue, we must qualify second resin source to meet ramp-up demand. Current supplier Polyplastics don't supply any volume due to their limited capacity. We must qualify local LCP supplier Wote to avoid production line-down. Wote is top one local LCP supplier in China.
  
- Product Impact
  - no impact to fit, form or function
  
- We only change LCP resin supplier but the resin LCP 30% GF BLACK UL94V-0is not changed
  - ✓ Before: Polylactics LCP E130i-BK205P
  - ✓ After: Wote LCP KD130BI-FA

# RELEASED

You may address inquires regarding this PCN by clicking on the below link  
[mailto:pcn\\_coordinator@molex.com?subject=PCN\\_Notification:511200](mailto:pcn_coordinator@molex.com?subject=PCN_Notification:511200)  
or contact your Local Sales Engineer.

Note: While responding, please retain " PCN Notification : **PCN Notification: 511200** " in the e-mail Subject line for faster response.

[Molex, LLC](#)  
2222 Wellington Court  
Lisle, IL 60532  
TEL (800) 786-6539  
[www.molex.com](http://www.molex.com)