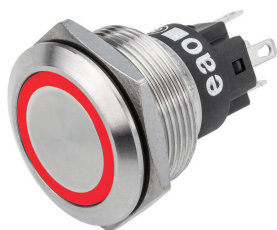


# Data sheet Illuminated pushbutton Ø 22 mm stainless steel 316L.

Part No.: 82-6651.1114

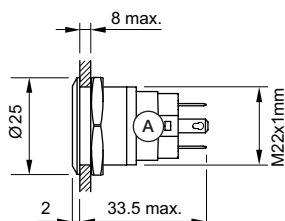
## Technical data



|                           |                               |
|---------------------------|-------------------------------|
| Front form                | round                         |
| Mounting cut-out          | Ø 22.3 mm                     |
| Terminal                  | Plug-in terminal              |
| Shape of illumination     | Ring (Tritan)                 |
| Operating voltage         | 24 V DC (LED)                 |
| Lens illumination         | illuminative                  |
| Lens colour               | Silver                        |
| Lens shape                | flush                         |
| Lens material             | Stainless steel 316L          |
| Lens optics               | opaque                        |
| Front bezel shape         | flush                         |
| Front bezel material      | Stainless steel 316L          |
| Weight                    | 0.018 kg                      |
| IP front protection       | IP65, IP67                    |
| Contacts change over      | 1 C                           |
| Contact material          | Silver                        |
| Illumination colour       | Red                           |
| Kind of illumination      | Single-LED                    |
| Switching action          | Momentary                     |
| Switching voltage         | 36 V                          |
| Switching voltage kind of | AC/DC                         |
| Switching current         | 0.6 A                         |
| Switching system          | Snap-action switching element |

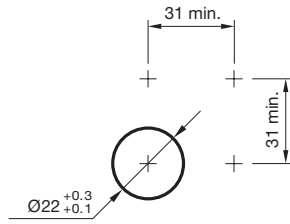
- Hints
- Switching voltage: max. 36 V AC/1A, max. 36 V DC/0.6

## Dimensions



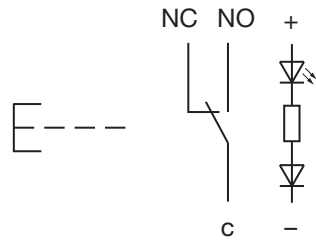
## Mounting cut-outs

---



## Wiring diagrams

---



## Component layouts

---

