

## MVJN clamp holder, negative, left

For copy and longitudinal turning with VN indexable insert

**ATORN**<sup>®</sup>

### Application

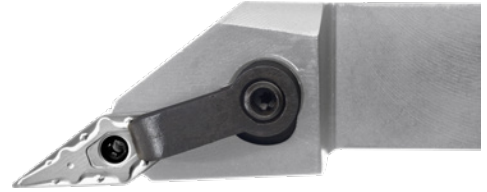
For copy and longitudinal turning with VN indexable insert, 35°.

### Version

- Precision-manufactured steel support, burnished, hardened, adjustable clamping system, type V, working angle 93°, tip angle 35°, clearance angle 0°

### Advantage

- Very streamlined geometry, optimised for contour lathe work with large feed depths and unfavourable conditions
- Negative geometry of the body ensures good stability and force absorption at large cutting depths
- Broad range of use: suitable for both finishing and roughing operations
- Adjustable clamp minimises vibrations and ensures good force transfer



<b>Art. No.</b>	<b>17859 111</b>
<b>ISO name</b>	MVJN R/L 2020 K16
<b>Shaft height</b>	20 mm
<b>Shank width</b>	20 mm
<b>Length</b>	125 mm
<b>Programming size</b>	25 mm
<b>Length of head</b>	37 mm
<b>Suitable for indexable inserts</b>	VN.. 1604..
<b>Tool design</b>	Left
<b>DIN</b>	4983

### EAN-Code

405029312775 1