

**tension spring terminal roof style
ZDU 2.5-2**

Weidmüller Interface GmbH & Co. KG
Klingenbergstraße 16
D-32758 Detmold
Germany
Fon: +49 5231 14-0
Fax: +49 5231 14-292083
www.weidmueller.com



Terminal blocks in tension clamp system and the Z Series are specially customised to the customers' requirements. Less space, spacious labelling area, integrated test point, cross-connection functionality within the Z Series and another family of terminals by Weidmüller. Z-Series terminals have a large clamping range and one or two cross-connection slots. Plug-in standard cross-connections enable potentials to be distributed over any number of terminals.

General ordering data

Type	ZDU 2.5-2
Order No.	1772060000
Version	tension spring terminal roof style, Feed-through terminal, Rated cross-section: Tension clamp connection, Wemid, Dark Beige
GTIN (EAN)	4032248128709
Qty.	100 pc(s).

**tension spring terminal roof style
ZDU 2.5-2**

Weidmüller Interface GmbH & Co. KG
 Klingenbergstraße 16
 D-32758 Detmold
 Germany
 Fon: +49 5231 14-0
 Fax: +49 5231 14-292083
 www.weidmueller.com

Technical data
Dimensions and weights

Length	50.5 mm	Width	5.1 mm
Height	43 mm	Height of lowest version	44 mm
Net weight	5.37 g		

Temperatures

Operating temperature		Storage temperature	
Continuous operating temp., min.	-50 °C	Continuous operating temp., max.	120 °C

Rated data IECEx/ATEX

Certificate No. (ATEX)	KEMA97ATEX4677U	ATEX certificate	KEMA97ATEX4677U_d.pdf
ATEX certificate	KEMA97ATEX4677U_e.pdf	Max. voltage (ATEX)	550 V
Current (ATEX)	21 A	Wire cross section max. (ATEX)	2.5 mm ²
Voltage, cross-connection		Operating temperature range	For operating temperature range see EC Design Test Certificate / IEC Ex-Certificate of Conformity
	CrossConnectionGuide.pdf		
Marking EN 60079-7	Ex e II	Marking ATEX Directive 94/9/EC	II 2 G D

Additional technical data

Explosion-tested version	Yes	Number of similar terminals	1
Open sides	right	Type of mounting	Snap-on
Version	Tension-clamp connection, for plug-in cross-connector, One end without connector		

CSA ratings data

Certificate No. (CSA)	200039-1194786	Voltage size C (CSA)	600 V
Current size C (CSA)	24 A	Wire cross section max. (CSA)	12 AWG
Wire cross section min. (CSA)	26 AWG		

Clampable wires (additional connection)

Conductor cross-section, flexible plus plastic collar DIN 46228/1, further connection, min.	0.5 mm ²	Conductor cross-section, flexible plus plastic collar DIN 46228/1, further connection, max.	2.5 mm ²
---	---------------------	---	---------------------

**tension spring terminal roof style
ZDU 2.5-2**

Weidmüller Interface GmbH & Co. KG
 Klingenbergstraße 16
 D-32758 Detmold
 Germany
 Fon: +49 5231 14-0
 Fax: +49 5231 14-292083
 www.weidmueller.com

Technical data**Clampable wires (rated connection)**

Type of connection	Tension clamp connection	Stripping length	10 mm
Blade size	0.6 x 3.5 mm	Connection direction	Inclined / angled
Number of connections	2	Clamping range, rated connection, min.	0.13 mm ²
Clamping range, rated connection, max.	4 mm ²	Gauge to IEC 60947-1	A2
Wire connection cross section, solid core, max. rated connection	0.5 mm ²	Wire connection cross section, solid core max. rated connection	4 mm ²
Wire connection cross section, finely stranded, max.	2.5 mm ²	Wire connection cross-section, finely stranded, min.	0.5 mm ²
Wire connection cross section, finely stranded with wire-end ferrules DIN 46228/1, rated connection, min.	0.5 mm ²	Wire connection cross section, finely stranded with wire-end ferrules DIN 46228/1, rated connection, max.	2.5 mm ²
Cross-section for connected conductor, finely stranded with wire-end ferrules and plastic collars DIN 46228/4, rated connection, min.	0.5 mm ²	Wire connection cross-section, finely stranded with wire-end ferrules and plastic collars DIN 46228/4, rated connection, max.	1.5 mm ²
Wire connection cross section AWG, min.	AWG 26	Wire connection cross section AWG, max.	AWG 12

Dimensions

TS 35 offset	25.5 mm
--------------	---------

Rated data

Rated voltage	800 V	Rated impulse withstand voltage	8 kV
Rated current	24 A	Current at maximum wires	24 A
Standards	IEC 60947-7-1	Pollution severity	3

UL ratings data

Certificate No. (cURus)	E60693VOL1SEC52	Conductor size Factory wiring max. (cURus)	12 AWG
Conductor size Factory wiring min. (cURus)	26 AWG	Conductor size Field wiring max. (cURus)	12 AWG
Conductor size Field wiring min. (cURus)	26 AWG	Current size C (cURus)	24 A
Voltage size C (cURus)	600 V		

Material data

Insulating material	Wemid	Material	Wemid
Colour	Dark Beige	UL 94 flammability rating	V-0

System specifications

Product family	tension spring terminal roof style	Type of connection	Tension clamp connection
Connection direction	Inclined / angled	Number of levels	1
Number of connections	2	No. of clamping points per level	2
Levels cross-connected internally	No	Mounting rail	TS 35
End cover plate required	Yes		

Classifications

ETIM 3.0	EC000897	UNSPSC	30-21-18-11
eClass 5.1	27-14-11-20	eClass 6.2	27-14-11-20
eClass 7.1	27-14-11-20		

Creation date November 21, 2013 3:18:17 PM CET

Data sheet

**tension spring terminal roof style
ZDU 2.5-2**

Weidmüller Interface GmbH & Co. KG
 Klingenbergstraße 16
 D-32758 Detmold
 Germany
 Fon: +49 5231 14-0
 Fax: +49 5231 14-292083
 www.weidmueller.com

Technical data

Product information

Descriptive text ordering data	Rated voltage is reduced to 400 V when using the cross-connector.
Descriptive text technical data	2.5 mm ² flexible wires with wire-end ferrules are crimped with the Weidmüller PZ 6/5 crimping tool.
Descriptive text accessories	The rated voltage is decreased to 250 V when using the shielding rail LS 2.8 (1056400000).

Approvals

Approvals



ROHS

Conform

Data sheet

**tension spring terminal roof style
ZDU 2.5-2**

Weidmüller Interface GmbH & Co. KG
 Klingenbergstraße 16
 D-32758 Detmold
 Germany
 Fon: +49 5231 14-0
 Fax: +49 5231 14-292083
 www.weidmueller.com

Accessories

ZTA 4



Weidmüller offers users of modular terminals of the Z-Series a comprehensive range of accessories that render possible appropriate solutions for all - even non-standard - tasks.
 The accessories must comply with the same quality standards as the modular terminals themselves.

General ordering data

Type	Order No.	Version	GTIN (EAN)	Qty.
ZTA 4	1688110000	Test adapter, Rated control voltage:	4008190855666	25 pc(s).

ZAD



Weidmüller offers users of modular terminals of the Z-Series a comprehensive range of accessories that render possible appropriate solutions for all - even non-standard - tasks.
 The accessories must comply with the same quality standards as the modular terminals themselves.

General ordering data

Type	Order No.	Version	GTIN (EAN)	Qty.
ZAD 1/4-2 GE	1764560000	Z-series, Cover	4032248066063	20 pc(s).

Slotted screwdriver

Slotted screwdriver with rounded blade SD DIN 5265, ISO 2380/2, output to DIN 5264, ISO 2380/1.
 ChromTop tip, SoftFinish grip



General ordering data

Type	Order No.	Version	GTIN (EAN)	Qty.
SDS 0.6X3.5X100	9008330000	Screwdriver, Blade width (B): 3.5 mm, Blade length: 100 mm, Blade thickness (A): 0.6 mm	4032248056286	1 pc(s).

**tension spring terminal roof style
ZDU 2.5-2**

Weidmüller Interface GmbH & Co. KG
 Klingenbergstraße 16
 D-32758 Detmold
 Germany
 Fon: +49 5231 14-0
 Fax: +49 5231 14-292083
 www.weidmueller.com

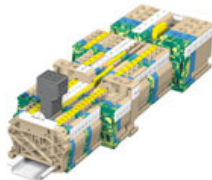
Accessories
Blank


WS markers are the perfect match for the W-series connectors. Thanks to their system compatibility, the WS tags can also be used with the I-series and the Z-series. The large marking surfaces do not only permit long character strings but also multi-line text. WS markers are ideal for labels with long, customised character strings. Thanks to the proven MultiCard format, printing with laser printer, PrintJet ADVANCED, plotter or MC-Mobilo is possible.

- Can be fitted in strips or individually
- Markers in proven MultiCard format

General ordering data

Type	Order No.	Version	GTIN (EAN)	Qty.
WS 14/5 MC	1768090000	Terminal markers, MultiCard, 14 x 5 mm, Polyamide 66, Colour: White	4032248106271	480 pc(s).

Cross-connection


A plug-in cross-connection system (ZQV) is available for all modular terminals of the P-series.

General ordering data

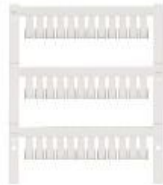
Type	Order No.	Version	GTIN (EAN)	Qty.
ZQV 2.5/20	1908960000	Z-series, Accessories, Cross-connector, For the terminals, No. of poles: 20	4032248535293	20 pc(s).

**tension spring terminal roof style
ZDU 2.5-2**

Weidmüller Interface GmbH & Co. KG
 Klingenbergstraße 16
 D-32758 Detmold
 Germany
 Fon: +49 5231 14-0
 Fax: +49 5231 14-292083
 www.weidmueller.com

Accessories

Blank



ZS markers - in proven MultiCard-format - have been developed specifically for the Z-series. They have a large printing area. The hinged mechanism even allows access to cross-connectors without dismantling. Quick installation is guaranteed by the fact that the single tags are clipped on in strips. The single tags are easy to separate.

- Hinged marker area
- Can be fitted in strips or individually
- Markers in proven MultiCard format

General ordering data

Type	Order No.	Version	GTIN (EAN)	Qty.
ZS 10/5 MC	1610000000	Terminal markers,	4008190263171	480 pc(s).
NE WS		MultiCard, 10 x 5 mm, Polyamide 66, Colour: White		

Custom printing



The dekafix (DEK) marker is the universal marker for all conductor and plug-in connectors as well as for electronic sub-assemblies. The system is ideal for short number sequences and covers a large range of ready-printed markers.

Strips for fast installation in one work step. The printing is easy to read, rich in contrast, and is available in five widths.

- Large range of ready-to-use markers
- Strips for fast installation
- Connector markers, suitable for all Weidmüller cable connectors
- Available as blank cards, MultiCard or as cards with standard printing

General ordering data

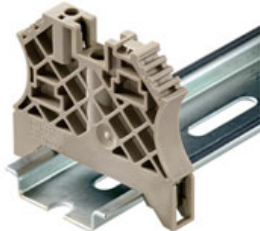
Type	Order No.	Version	GTIN (EAN)	Qty.
DEK 5/5 MC	1609810000	Terminal markers,	4008190456597	200 pc(s).
SDR		MultiCard, 5 x 5 mm, Polyamide 66, Colour: To customer specification		

tension spring terminal roof style ZDU 2.5-2

Weidmüller Interface GmbH & Co. KG
Klingenbergstraße 16
D-32758 Detmold
Germany
Fon: +49 5231 14-0
Fax: +49 5231 14-292083
www.weidmueller.com

Accessories

for TS 35 terminal rail



Weidmüller's range of products includes end brackets that guarantee a permanent, reliable mounting on the terminal rail and prevent sliding. Versions with and without screws are available. The end brackets include marking options, also for group markers, and also a test plug holder.

General ordering data

Type	Order No.	Version	GTIN (EAN)	Qty.
ZEW 35/2	8630740000	Accessories, End bracket	4032248348916	20 pc(s).
EW 35 GR 7032	0383530000	Accessories, End bracket	4008190027322	50 pc(s).
EW 35	0383560000	Accessories, End bracket	4008190181314	50 pc(s).
EW 35/ SCHA/M3	0258660000	Accessories, End bracket	4008190033477	20 pc(s).
ZEW 35	9540000000	Accessories, End bracket	4008190956264	20 pc(s).
WEW 35/2	1061200000	Accessories, End bracket	4008190030230	100 pc(s).
WEW 35/1	1059000000	Accessories, End bracket	4008190172282	50 pc(s).

ZQV 2.5



Weidmüller offers users of modular terminals of the Z-Series a comprehensive range of accessories that render possible appropriate solutions for all - even non-standard - tasks.

The accessories must comply with the same quality standards as the modular terminals themselves.

General ordering data

Type	Order No.	Version	GTIN (EAN)	Qty.
ZQV 2.5/9	1608930000	Z-series, Accessories, Cross-connector, For the terminals, No. of poles: 9	4008190117009	20 pc(s).
ZQV 2.5/6	1608900000	Z-series, Accessories, Cross-connector, For the terminals, No. of poles: 6	4008190149840	20 pc(s).
ZQV 2.5/8	1608920000	Z-series, Accessories, Cross-connector, For the terminals, No. of poles: 8	4008190061531	20 pc(s).
ZQV 2.5/2	1608860000	Z-series, Accessories, Cross-connector, For the terminals, No. of poles: 2	4008190123680	60 pc(s).
ZQV 2.5/7	1608910000	Z-series, Accessories, Cross-connector, For the terminals, No. of poles: 7	4008190159665	20 pc(s).

Creation date November 21, 2013 3:18:17 PM CET

tension spring terminal roof style ZDU 2.5-2

Weidmüller Interface GmbH & Co. KG
 Klingenbergstraße 16
 D-32758 Detmold
 Germany
 Fon: +49 5231 14-0
 Fax: +49 5231 14-292083
 www.weidmueller.com

Accessories

ZQV 2.5/10	1608940000	Z-series, Accessories, Cross-connector, For the terminals, No. of poles: 10	4008190099060 20 pc(s).
ZQV 2.5/5	1608890000	Z-series, Accessories, Cross-connector, For the terminals, No. of poles: 5	4008190065713 20 pc(s).
ZQV 2.5/4	1608880000	Z-series, Accessories, Cross-connector, For the terminals, No. of poles: 4	4008190082208 60 pc(s).
ZQV 2.5/3	1608870000	Z-series, Accessories, Cross-connector, For the terminals, No. of poles: 3	4008190061630 60 pc(s).
ZQV 2.5/50	1697540000	Z-series, Accessories, Cross-connector, For the terminals, No. of poles: 50	4008190883256 10 pc(s).

ZAP/TW 7



Weidmüller offers users of modular terminals of the Z-Series a comprehensive range of accessories that render possible appropriate solutions for all - even non-standard - tasks.

The accessories must comply with the same quality standards as the modular terminals themselves.

General ordering data

Type	Order No.	Version	GTIN (EAN)	Qty.
ZAP/TW7 BL	1706120000	Z-series, End plate, Partition	4008190915469	50 pc(s). plate
ZAP/TW7 OR	1706130000	Z-series, End plate, Partition	4008190915476	50 pc(s). plate
ZAP/TW7	1706110000	Z-series, End plate, Partition	4008190915452	50 pc(s). plate