

Check Valve and Throttle/Check Valve with SAE Flanged Ports

RE 64 548/06.03 1/6
replaces: 03.94

Type MHFS; MHSV

Size 20, 25, 32
Series 1X
Operating pressure max. 420 bar



K 3680/1

Type MHFS ...-1X/...



K 3683/12

Type MHSV...-1X/...

Overview of contents

Contents	Page
Features	1
Throttle/Check Valve, Type MHFS:	
• Sizes available	2
• Function, Section, Symbol	2
• Technical Data	2
• Operating Curves	3
• Unit Dimensions	3
Check Valve, Type MHSV:	
• Sizes available	4
• Section, Symbol	4
• Technical Data	4
• Unit Dimensions	4
Check Valve, Type MHSV 22 PB2:	
• Size available	5
• Section, Symbol	5
• Technical Data	5
• Unit Dimensions	5

Features

- Operation dependent on pressure and viscosity
- Compact design
- For direct mounting on cylinder or distributor block
- Reduction of possible leakage points
- Additional gauge port

Throttle/Check Valve, Type MHFS

Sizes available:

- Size 20 = 3/4" SAE
Type MHFS 20 E2B1-1X/PBF45B08V11
Ordering code **R900417906**
- Size 25 = 1" SAE
Type MHFS 25 E2B1-1X/PBF10B04V11
Ordering code **R900334465**
- Size 32 = 1 1/4" SAE
Type MHFS 32 E2B1-1X/PBF10B03V11
Ordering code **R900411106**

Function, Section, Symbol

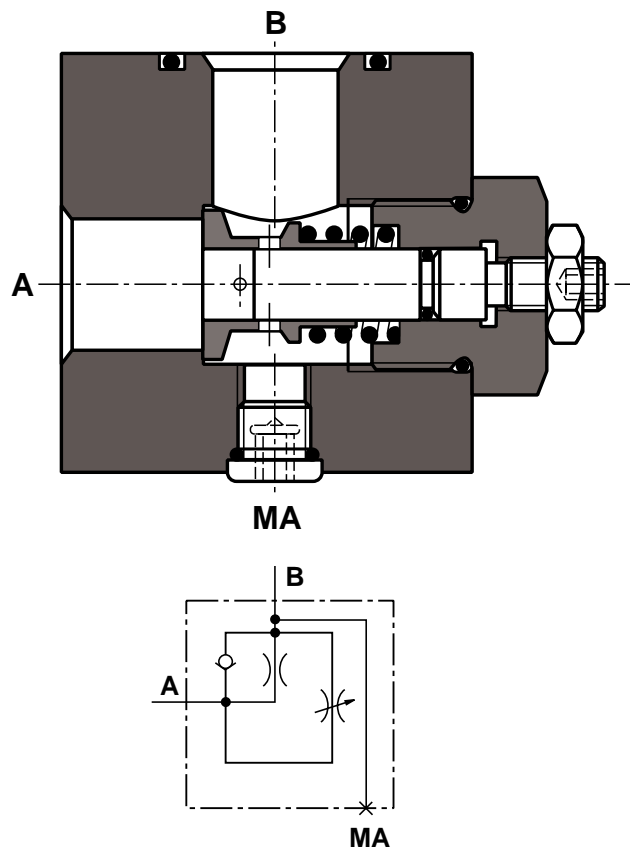
The valves are primarily used for limiting cylinder speeds, in order to reduce shocks when stopping heavy loads.

They consist basically of housing (1), spindle (2), valve poppet (3) and compression spring (4).

Limiting the cylinder speed (flow from B to A) is achieved by means of spindle (2). Depending on the spindle setting, radial holes (5) in valve poppet (3) are plugged to produce the required throttling to flow.

Fixed opening (6) between A and B prevents the throttle opening from being reduced to 0. This opening is 7.6 mm² for size 20, 13.2 mm² for size 25, and 26.4 mm² for size 32.

For the lifting operation (flow from A to B), valve poppet (3), which is guided by spindle (2), is pressed against compression spring (4) to allow the valve to fully open.

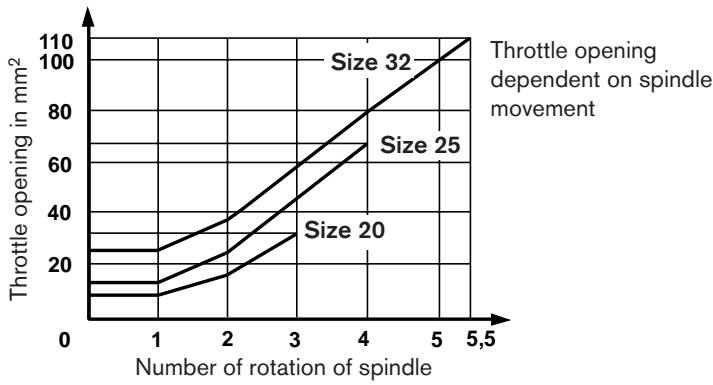


Technical data (For operation outside these parameters, please consult us!)

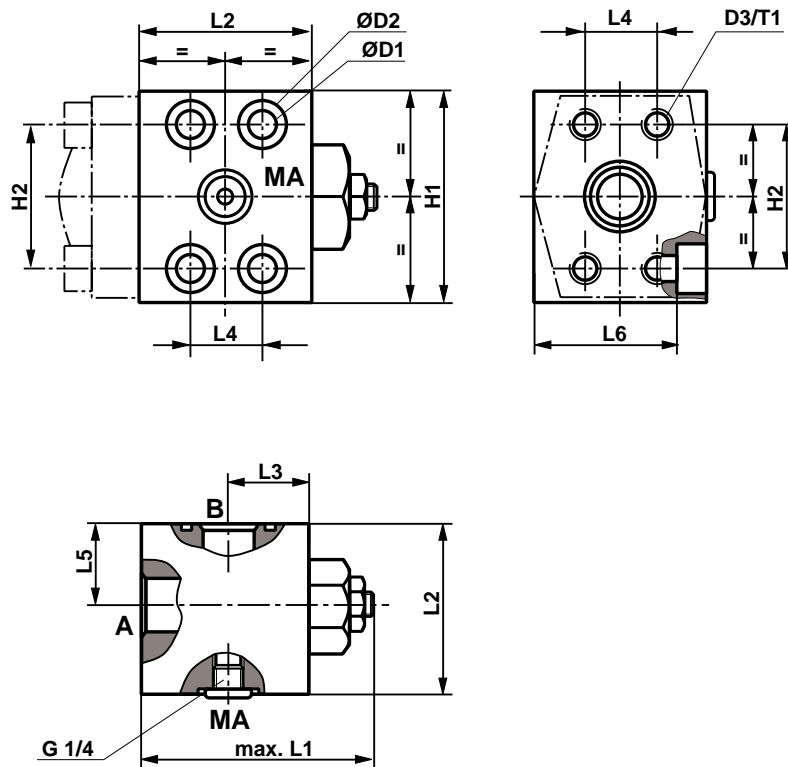
Max. operating pressure	bar	420	
Cracking pressure	bar	0,5	
Fluid		Mineral oil to DIN 51 524 (HL, HLP), phosphate ester (HFD-R)	
Fluid temperature range	°C	- 20 to + 80	
Viscosity range	mm ² /s	2,6 to 380	
Fluid cleanliness (maximum permissible)		ISO 4406 (C) Class 20/18/15	
Weight	Size 20	kg	2,1
	Size 25	kg	3,5
	Size 32	kg	5,1

Throttle/Check Valve, Type MHFS

Operating Curves (measured at $v = 42 \text{ mm}^2/\text{s}$ and $\vartheta = 50 \text{ }^\circ\text{C}$)



Unit dimensions (Dimensions in mm)



Size	Port A, B ¹⁾	L1 max.	L2	L3	L4	L5	L6	H1	H2	ØD1	ØD2	D3	T1
20	SAE 3/4"	85	60	30	23,9	30	49	75	50,8	11	18	M10	14
25	SAE 1"	100	75	37	27,8	40	60	80	57,2	13,5	20	M12	16
32	SAE 1 1/4"	116	85	42,5	31,7	42,5	70	90	66,7	15	24	M14 x 1,5	18

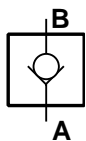
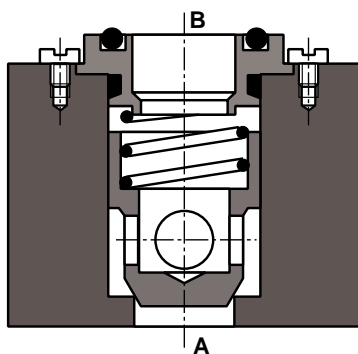
¹⁾ 6000 PSI (420 bar)

Check Valve, Type MHSV

Sizes available:

- Size 20 = 3/4" SAE
Type MHSV 22 ZB1-1X/M11-099
Ordering code **R900493236**
- Size 25 = 1" SAE
Type MHSV 25 FB1-1X/M11
Ordering code **R900358470**
- Size 32 = 1 1/4" SAE
Type MHSV 30 FB1-1X/M11
Ordering code **R900307483**

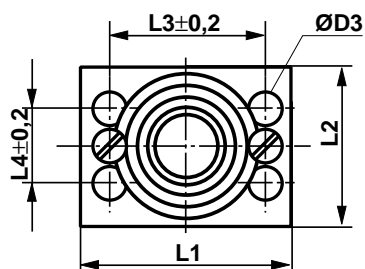
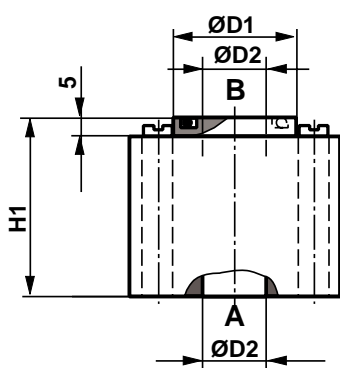
Section, Symbol



Technical data (For operation outside these parameters, please consult us!)

Max. operating pressure	bar	420
Cracking pressure:	Size 20	bar 0,6
	Size 25	bar 0,5
	Size 32	bar 1,5
Fluid	Mineral oil to DIN 51 524 (HL, HLP) Phosphate ester (HFD-R)	
Fluid temperature range	°C	- 20 to + 80
Viscosity range	mm ² /s	2,6 to 380
Fluid cleanliness (maximum permissible)	ISO 4406 (C) Class 20/18/15	
Weight	kg	Approx. 1

Unit dimensions (Dimensions in mm)



Size	Port A, B ¹⁾	L1	L2	L3±0,2	L4±0,2	H1	ØD1	ØD2	ØD3	Seal kit ordering code
20	SAE 3/4"	70	50	50,8	23,9	57	40	20	11,5	R900312289
25	SAE 1"	80	60	57,2	27,8	70	46	25	13,5	R900312593
32	SAE 1 1/4"	90	72	66,7	31,7	78	52	30	16	R900004330 R900007920 ²⁾

¹⁾ 6000 PSI (420 bar)

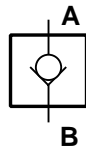
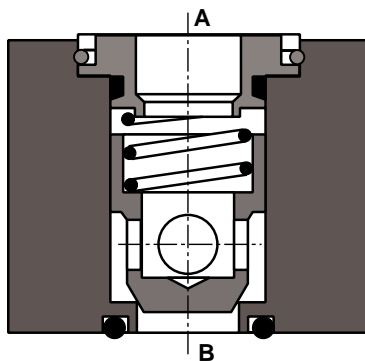
²⁾ If necessary, state both ordering codes

Check Valve, Type MHSV 22 PB2

Size available:

- Size 20 = 3/4" SAE
Type MHSV 22 PB2-1X/M
Ordering code **R900459081**

Section, Symbol



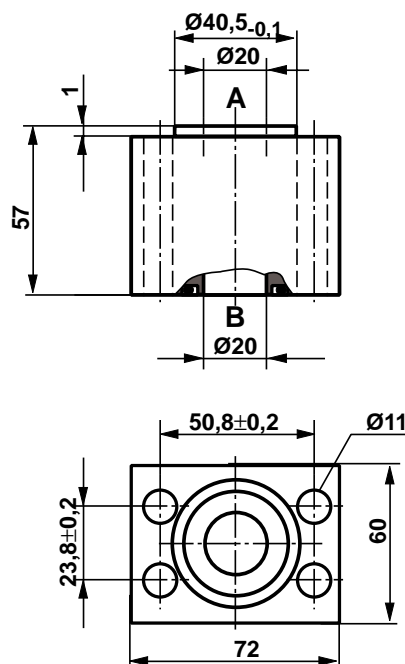
Technical data (For operation outside these parameters, please consult us!)

Max. operating pressure	bar	420
Cracking pressure:	bar	0,6
Fluid		Mineral oil to DIN 51 524 (HL, HLP) Phosphate ester (HFD-R)
Fluid temperature range	°C	- 20 to + 80
Viscosity range	mm ² /s	2,6 to 380
Fluid cleanliness (maximum permissible)		ISO 4406 (C) Class 20/18/15
Weight	kg	Approx. 1

Unit dimensions (Dimensions in mm)

3/4" SAE ports (A, B) 6000 PSI (420 bar)

Seal kit ordering code **R900312289**



Notes

Bosch Rexroth AG
Industrial Hydraulics
Zum Eisengießer 1
97816 Lohr am Main, Germany
Telefon +49 (0) 93 52-18 0
Telefax +49 (0) 93 52-18 23 58
documentation@boschrexroth.de
www.boschrexroth.de

© 2003 by Bosch Rexroth AG, Industrial Hydraulics, D-97813 Lohr am Main
All rights reserved. No part of this document may be reproduced or stored, processed, duplicated or circulated using electronic systems, in any form or by any means, without the prior written authorisation of Bosch Rexroth AG.
In the event of contravention of the above provisions, the contravening party is obliged to pay compensation.
The data specified above only serves to describe the product. No statements concerning a certain condition or suitability for a certain application can be derived from our information. The details stated do not release you from the responsibility for carrying out your own assessment and verification. It must be remembered that our products are subject to a natural process of wear and ageing.