

OSLON® SSL 4+ PowerStars

ILH-##04-####-SC211-WIR200.

Product Overview

At the heart of each 4 LED PowerStar is 4 OSLON SSL ThinGan (UX:3) LEDs. OSLON® SSL can be driven up to 1000mA while OSRAM's latest power chip technology remains efficient even at the highest drive currents. A low thermal resistance of 7K/W ensures cool running and a highly efficient product. PowerStars are compact, powerful LED light sources built on aluminium substrates for optimal thermal management. Available with 200mm wires as standard.

In our portfolio ILS have 4 types of OSLON® SSL PowerStar:

OSLON 80: Offers a pre-focused radiation pattern of 80 degrees to efficiently couple into secondary optics

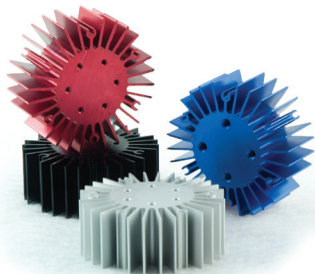
OSLON 150: Provides a wide radiation pattern of 150 degrees which allows perfect interaction with various reflectors.

OSLON Square: Incorporates a 2mm² die with a 120 degree lens, offering almost double the lumens from the same 3x3mm size package with a 1.5A capability.

OSLON Signal: OSLON Signal is available in various colours and performance classes, offering bin selections that comply with international and many national standards.

Accessories Designed for the PowerStar

3D Remote Phosphor light sources from Intematix provide highly uniform light distribution, for use with our Deep Blue PowerStars.

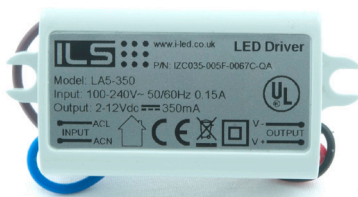


Heat Sink kits with pre-tapped screw holes and mounting screws. Standard lengths of 20,40,60 and 80mm. They also come with Thermal Interface Material (TIM) attached to the top surface. Available in Black, Red, Silver and Blue colour variants and fixing screws.

ILS have produced a range of high-performance, cost effective Thermal Interface Materials (TIM) to perfectly match their standard products.

Our product fills the air pockets between the two surfaces, forming a continuous layer to conduct heat away from the LED to the heatsink. As you'd imagine, this is why it's called thermal interface material.

ILS offer TIM in three options - double sided adhesive, single sided adhesive and no adhesive.



Select from our range of IP rated AC/DC LED drivers suitable for use with our range of LED engines. All tried and tested ready to plug and play...



The majority of the products in this flyer is available for sale through RS. If you require small quantities please go to their website to check stock.

Product Options 4 OSLON+ 80

LED Colour	ILS PART NUMBER	Description	Typ Brightness @ 350mA
Hot White 2700K	ILH-ON04-HWWH-SC211-WIR200.	4 OSLON+ PowerStar Hot White 2700K	444lm
Warm White 3000K	ILH-ON04-WMWH-SC211-WIR200.	4 OSLON+ PowerStar Warm White 3000K	444lm
Quartz White 3500K	ILH-ON04-QZWH-SC211-WIR200.	4 OSLON+ PowerStar Quartz White 3500K	452lm
Neutral White 4000K	ILH-ON04-NUWH-SC211-WIR200.	4 OSLON+ PowerStar Neutral White 4000K	500lm
Street White 5700K	ILH-ON04-STWH-SC211-WIR200.	4 OSLON+ PowerStar Street White 5700K	576lm
Cool White 6500K	ILH-ON04-ULWH-SC211-WIR200.	4 OSLON+ PowerStar Cool White 6500K	500lm
Ultra Cool White 10000K+	ILH-ON04-UCWH-SC211-WIR200.	4 OSLON+ PowerStar Ultra Cool White 10000K+ (120° Lens)	460lm
Deep Blue 455nm	ILH-ON04-DEBL-SC211-WIR200.	4 OSLON+ PowerStar Deep Blue 455nm	2160mW
Blue 470nm	ILH-ON04-BLUE-SC211-WIR200.	4 OSLON+ PowerStar Blue 470nm	116lm
True Green 528nm	ILH-ON04-TRGR-SC211-WIR200.	4 OSLON+ PowerStar True Green 528nm	388lm
Yellow 590nm	ILH-ON04-YELL-SC211-WIR200.	4 OSLON+ PowerStar Yellow 590nm	928lm
Red-Orange 617nm	ILH-ON04-RDOR-SC211-WIR200.	4 OSLON+ PowerStar Red Orange 617nm	320lm
Red 625nm	ILH-ON04-RED1-SC211-WIR200.	4 OSLON+ PowerStar Red 625nm	232lm
Hyper Red 656nm	ILH-ON04-HYRE-SC211-WIR200.	4 OSLON+ PowerStar Hyper Red 656nm	1420mW
Far Red 730nm	ILH-ON04-FARE-SC211-WIR200.	4 OSLON+ PowerStar Far Red 730nm	1000mW

Product Options 4 OSLON+ 150

LED Colour	ILS PART NUMBER	Description	Typ Brightness @ 350mA
Hot White 2700K	ILH-OW04-HWWH-SC211-WIR200.	4 OSLON+ PowerStar Hot White 2700K	444lm
Warm White 3000K	ILH-OW04-WMWH-SC211-WIR200.	4 OSLON+ PowerStar Warm White 3000K	444lm
Quartz White 3500K	ILH-OW04-QZWH-SC211-WIR200.	4 OSLON+ PowerStar Quartz White 3500K	452lm
Neutral White 4000K	ILH-OW04-NUWH-SC211-WIR200.	4 OSLON+ PowerStar Neutral White 4000K	500lm
Street White 5700K	ILH-OW04-STWH-SC211-WIR200.	4 OSLON+ PowerStar Street White 5700K	576lm
Cool White 6500K	ILH-OW04-ULWH-SC211-WIR200.	4 OSLON+ PowerStar Cool White 6500K	500lm
Deep Blue 455nm	ILH-OW04-DEBL-SC211-WIR200.	4 OSLON+ PowerStar Deep Blue 455nm	2160mW
Blue 470nm	ILH-OW04-BLUE-SC211-WIR200.	4 OSLON+ PowerStar Blue 470nm	112lm
True Green 528nm	ILH-OW04-TRGR-SC211-WIR200.	4 OSLON+ PowerStar True Green 528nm	388lm
Yellow 590nm	ILH-OW04-YELL-SC211-WIR200.	4 OSLON+ PowerStar Yellow 590nm	928lm
Red-Orange 617nm	ILH-OW04-RDOR-SC211-WIR200.	4 OSLON+ PowerStar Red Orange 617nm	320lm
Red 625nm	ILH-OW04-RED1-SC211-WIR200.	4 OSLON+ PowerStar Red 625nm	232lm
Hyper Red 656nm	ILH-OW04-HYRE-SC211-WIR200.	4 OSLON+ PowerStar Hyper Red 656nm	1420mW
Far Red 730nm	ILH-OW04-FARE-SC211-WIR200.	4 OSLON+ PowerStar Far Red 730nm	1000mW

Product Options 4 OSLON+ SQUARE

LED Colour	ILS PART NUMBER	Description	Typ Brightness @ 700mA
Hot White 2700K	ILH-OO04-HWWH-SC211-WIR200.	4 OSLON+ PowerStar Hot White 2700K	880lm
Warm White 3000K	ILH-OO04-WMWH-SC211-WIR200.	4 OSLON+ PowerStar Warm White 3000K	840lm
Quartz White 3500K	ILH-OO04-QZWH-SC211-WIR200.	4 OSLON+ PowerStar Quartz White 3500K	217lm
Neutral White 4000K	ILH-OO04-NUWH-SC211-WIR200.	4 OSLON+ PowerStar Neutral White 4000K	1000lm
Street White 5700K	ILH-OO04-STWH-SC211-WIR200.	4 OSLON+ PowerStar Street White 5700K	1240lm
Cool White 6500K	ILH-OO04-ULWH-SC211-WIR200.	4 OSLON+ PowerStar Cool White 6500K	1240lm
Deep Blue 455nm	ILH-OO04-DEBL-SC211-WIR200.	4 OSLON+ PowerStar Deep Blue 455nm	4400mW

Product Options 4 OSLON+ SIGNAL

LED Colour	ILS PART NUMBER	Description	Typ Brightness @ 350mA
Blue 465nm	ILH-SO04-SIBL-SC201-WIR200.	4 OSLON+ Signal - PowerStar - Blue 120°	112lm
Converted Blue 474nm	ILH-SO04-SICB-SC201-WIR200.	4 OSLON+ Signal - PowerStar - Converted Blue 125°	180lm
Verde Green 505nm	ILH-SO04-SIVG-SC201-WIR200.	4 OSLON+ Signal - PowerStar Verde Green 125°	244lm
True Green 525nm	ILH-SO04-SITG-SC201-WIR200.	4 OSLON+ Signal - PowerStar - True Green 130°	328lm
Yellow 590nm	ILH-SO04-SIYL-SC201-WIR200.	4 OSLON+ Signal - PowerStar - Yellow 125°	132lm
Converted Yellow 590nm	ILH-SO04-SICY-SC201-WIR200.	4 OSLON+ Signal - PowerStar - Converted Yellow 125°	284lm
Red 612-632nm	ILH-SO04-SIRE-SC201-WIR200.	4 OSLON+ Signal - PowerStar - Red 125°	244lm
White	ILH-SO04-SIWH-SC201-WIR200.	4 OSLON+ Signal - PowerStar - White 120°	448lm

For further information please contact ILS

The values contained in this data sheet can change due to technical innovations. Any such changes will be made without separate notification.