



TECHNICAL CHARACTERISTICS

MATERIAL  
 INSULATOR MATERIAL: PET (WHITE)  
 SUPPORT TAPE: PET (BLUE)  
 CONTACT MATERIAL: COPPER  
 CONTACT PLATING: TIN  
 QUALITY CLASS: 20 MATING CYCLES MIN.  
 PITCH: 0.50 MM

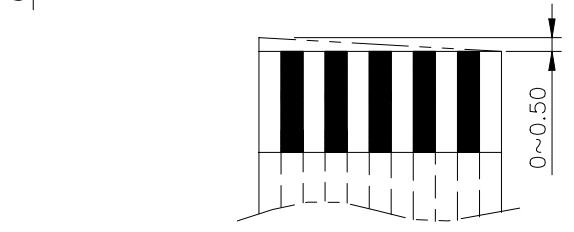
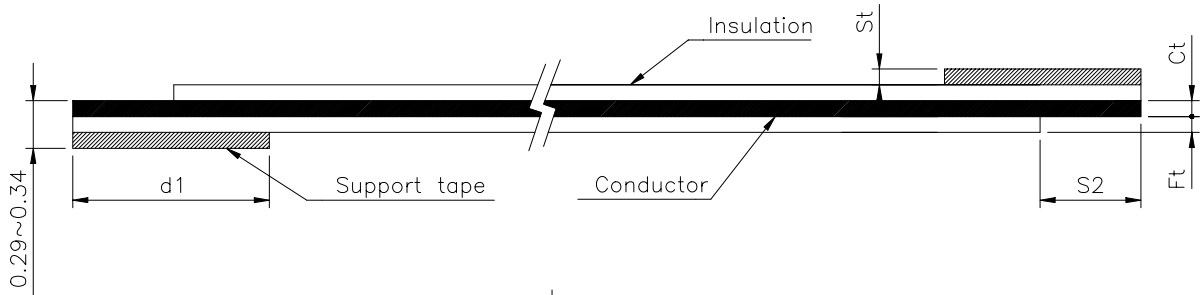
ENVIRONMENTAL  
 OPERATING TEMPERATURE: -30°C UP TO 105°C  
 HEAT RESISTANCE: 85°C x 95 HRS  
 FLAMMABILITY RATING UL SUB.758  
 MOISTURE RESISTANCE: 40°C, 95% RH x 96 HRS  
 COMPLIANCE: LEAD FREE AND ROHS

ELECTRICAL  
 CURRENT RATING: 0.5A MAX  
 WORKING VOLTAGE: 60V  
 INSULATION RESISTANCE: > 1000 MOHM/M (500 VDC)  
 DIELECTRIC STRENGTH: 500 VAC/MN NO BREAKDOWN  
 CONDUCTOR RESISTANCE: < 0.33 OHM/M  
 CONTACT RESISTANCE: < 20 mA

MECHANICAL  
 ELONGATION OF INSULATOR: > 60 TIMES  
 TENSIL STRENGTH OF INSULATION: > 3.5KG/MM<sup>2</sup>  
 FLEXING TEST: 180° > 20 TIMES  
 ABRASION: > 10000 TIMES  
 PULL/OUT: > 20 TIMES

PACKAGING  
 BAG

DIMENSION & TOLERANCE  
 W = (N+1) x P  
 Pt = (N-1) x P



Tolerance of Cutting Tilt

ABBR.	P	L	M	Ct	Cw	S1	S2	D1	D2
VALUE	0.50	50	0.5	0.035	0.3	4.0	4.0	8.0	8.0
TOLER.	±0.005	±3	±0.08	±0.01	±0.02	±1.0	±1.0	±2.0	±2.0

RoHS Compliant				PROJECTION: 	GENERAL TOLERANCE .X = +/- 0.2 .XX = +/- 0.15		
G							
F							
E							
D	31-MAR-09	TYPE 2	CH	APPROVAL: RJ	UNIT: MM	DESCRIPTION: 0.50MM FLAT FLEXIBLE CABLE TYPE 1 L=50MM	
C	19-MAR-09	Ct DIMENSION	CH		SCALE:		WERI PART NO: 6877 xx 050 002
B	11-NOV-08	CW DIMENSION	CH		SHEET: 1/1	SIZE <b>A4</b>	
A	11-DEC-07	PDF	EC		DRAW: CH		
REV	DATE	FILE	BY				