

IEEE-1394 "FIREWIRE™" CABLES

Computer



Fig.1



Fig.2



Fig.3



Fig.4



Fig.5



Fig.7



Fig.8

IEEE 1394 "Firewire™"/"I-Link™" Cables

Retail Part No.	Bulk Part No.	Figure No.	Description	Length Ft. (m)	Color	Cable	Speed
45-1346		1	4CM/4CM	6.5 (2)	Putty	2 Pairs x 32 AWG	1.6Gbps
45-1364		2	4CM/6CM	6.5 (2)	Putty	2 Pairs x 30 AWG	1.6Gbps
45-1366		2	6CM/6CM	6.5 (2)	Putty	2 Pairs x 30 AWG, 2 x 24 AWG	1.6Gbps

IEEE-1394 "Firewire™" Cables (Good)

Retail Part No.	Bulk Part No.	Figure No.	Description	Length (Feet)	Ferrite Bead
45-1345-15		3	IEEE1394 4ckt plug to 4ckt plug- 15 ft	15	No
45-1350-15		4	IEEE1394 6ckt to 6ckt plugs- 15 ft	15	No

IEEE-1394 "Firewire™" Cables (Better)

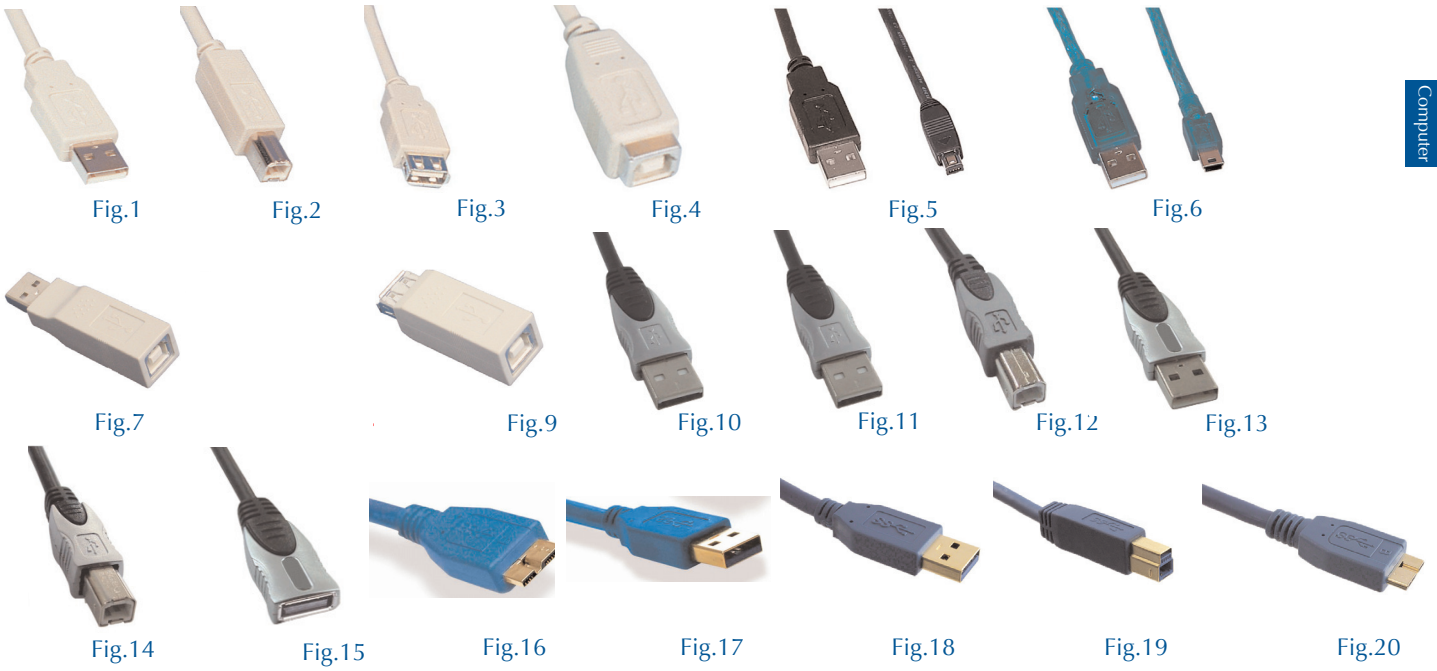
Retail Part No.	Bulk Part No.	Figure No.	Description	Length (Feet)	Ferrite Bead
45-1356-15		5	IEEE1394 6ckt to 6ckt plugs- 15 ft	15	No

IEEE-1394 "Firewire™" Cables (Best)

Retail Part No.	Bulk Part No.	Figure No.	Description	Length (Feet)	Ferrite Bead
45-1358-15		6	IEEE1394 4ckt to 4ckt plugs Metal Shells- 15 ft	15	No
45-1360-15		7	IEEE1394 4ckt to 6ckt plugs Metal Shells- 15 ft	15	No
45-1362-15		8	IEEE1394 6ckt to 6ckt plugs Metal Shells- 15 ft	15	No
45-1363-15		8	IEEE1394 6ckt to 6ckt plugs Metal Shells w/Ferrite Beads- 15 ft	15	Yes

Note: "Firewire" and "I-Link" are trademarks of IEEE Cables by Apple™ and Sony™ respectively.

USB 2.0 AND 3.0 CABLES



USB 2.0 Cables

Retail Part No.	Figure No.	Description	Length (Feet)	Ferrite Bead
45-1400-15	1	USB 2.0 A Plug to A Plug - 15 ft	15	No
45-1401-15	18	USB 2.0 A Plug to B Plug - 15 ft	15	No
45-1402-15	2	USB 2.0 B Plug to B Plug - 15 ft	15	No
45-1404-15	1&3	USB 2.0 A Plug to A Jack - 15 ft	15	No
45-1405-15	2&4	USB 2.0 B Plug to B Jack - 15 ft	15	No
45-1407-15	5	USB 2.0 A Plug to 4 Pin Mini-B Plug - 15 ft	15	No
45-1408-15	6	USB 2.0 A Plug to 5 Pin Mini-B Plug - 15 ft	15	No
45-1409	7	USB 2.0 A Plug to B Jack Adapter		
45-1411	8	USB 2.0 A Jack to B Plug Adapter		
45-1412	9	USB 2.0 A Jack to B Jack Adapter		
45-1414-15	10	USB 2.0 A Plug to A Plug - 15 ft	15	No
45-1420-15	10&11	USB 2.0 A Plug to B Plug - 15 ft	15	No
45-1423-15	10&12	USB 2.0 A Plug to 5 Pin Mini-B Plug - 15 ft	15	No
45-1425-15	13	USB 2.0 Metal Shells A Plug to A Plug - 15 ft	15	No
45-1426-15	13&14	USB 2.0 Metal Shells A Plug to B Plug - 15 ft	15	No
45-1428-15	13&15	USB 2.0 Metal Shells A Plug to A Jack - 15 ft	15	No

USB 2.0 Micro B Cables

Retail Part No.	Figure No.	Description	Length (Meter)	Ferrite Bead
45-1430-1	16&17	USB 2.0 A Plug to Micro B Plug - 1 M	1	No
45-1430-2	16&17	USB 2.0 A Plug to Micro B Plug - 1 M	1	No
45-1430-3	16&17	USB 2.0 A Plug to Micro B Plug - 1 M	1	No
45-1430-5	16&17	USB 2.0 A Plug to Micro B Plug - 1 M	1	No

USB 3.0 Cables

Retail Part No.	Figure No.	Description	Length (Meter)	Ferrite Bead
45-1431-1	18	USB 3.0 A Plug to A Plug - 1 M	1	No
45-1431-2	18	USB 3.0 A Plug to A Plug - 2 M	1	No
45-1431-3	18	USB 3.0 A Plug to A Plug - 3 M	1	No
45-1432-1	18&19	USB 3.0 A Plug to B Plug - 1 M	1	No
45-1432-2	18&19	USB 3.0 A Plug to B Plug - 2 M	1	No
45-1432-3	18&19	USB 3.0 A Plug to B Plug - 3 M	1	No
45-1433-1	18&20	USB 3.0 A Plug to Micro B Plug - 1 M	1	No
45-1433-2	18&20	USB 3.0 A Plug to Micro B Plug - 2 M	1	No
45-1433-3	18&20	USB 3.0 A Plug to Micro B Plug - 3 M	1	No

USB and BI-DIRECTIONAL CABLES

Computer



Fig.1



Fig.2



Fig.3



Fig.4



Fig.5



Fig.6



Fig.7



Fig.8



Fig.9

USB to USB Cables

Retail Part No.	Bulk Part No.	Figure No.(s)	Description	Length Ft. (m)	Color	Cable	Speed
66-1120		1	USB-A (Male) to USB-A (Male) USB 2.0	6.5 (2)	Black	1 Pair x 28 AWG, 2 x 24 AWG	480Mbps
45-1413		1 & 2	USB-A (Male) to USB-B (Male) USB 1.0	3.3 (1)	Putty	1 Pair x 28 AWG, 2 x 24 AWG	480Mbps
45-1416		1 & 2	USB-A (Male) to USB-B (Male) USB 1.0	6.5 (2)	Gray	1 Pair x 28 AWG, 2 x 24 AWG	480Mbps
45-1403		1 & 2	USB-A (Male) to USB-B (Male) USB 1.0	9.9 (3)	White	1 Pair x 28 AWG, 2 x 24 AWG	480Mbps
45-1406		1 & 2	USB-A (Male) to USB-B (Male) USB 1.0	13.2 (4)	Putty	1 Pair x 28 AWG, 2 x 24 AWG	480Mbps
45-1410		1 & 2	USB-A (Male) to USB-B (Male) USB 1.0	16.5 (5)	Putty	1 Pair x 28 AWG, 2 x 24 AWG	480Mbps
66-1126		1 & 2	USB-A (Male) to USB-B (Male) USB 2.0	16.5 (5)	Black	1 Pair x 28 AWG, 2 x 24 AWG	480Mbps
66-1121		1 & 2	USB-A (Male) to USB-B (Male) USB 2.0	6.5 (2)	Black	1 Pair x 28 AWG, 2 x 24 AWG	480Mbps
66-1125		1	USB-A (Male) to USB-A (Male) USB 2.0	16.5 (5)	Black	1 Pair x 28 AWG, 2 x 24 AWG	480Mbps
66-1123		1 & 3	USB-A (Male) to USB-miniB (Male) USB 2.0	6.5 (2)	Black	1 Pair x 28 AWG, 2 x 24 AWG	480Mbps
66-1128		1 & 3	USB-A (Male) to USB-miniB (Male) USB 2.0	16.5 (5)	Black	1 Pair x 28 AWG, 2 x 24 AWG	480Mbps

USB to Adapter Cables

Retail Part No.	Bulk Part No.	Figure No.(s)	Description	Length (Feet)	Color	Cable	Speed
45-1415		1 & 5	USB A (Male) to DB15 (Female)	6	Putty	1 Pair x 28 AWG, 2 x 24 AWG	12Mbps
45-1417		1 & 5	USB A (Male) to DB15 (Female)	12	Putty	1 Pair x 28 AWG, 2 x 24 AWG	12Mbps
45-1418		1 & 4	USB A (Male) to MD6 (Male)	6	Putty	1 Pair x 28 AWG, 2 x 24 AWG	12Mbps
45-1419		1 & 4	USB A (Male) to MD6 (Male)	12	Putty	1 Pair x 28 AWG, 2 x 24 AWG	12Mbps

IEEE-1284 Bi-directional Cables

Retail Part No.	Bulk Part No.	Figure No.(s)	Description	Length (Feet)	Color	Cable
45-1803		6 & 7	DB25 (Male)/CEN36 (Male)	3	Putty	18 Pairs x 28 AWG
45-1806		6 & 7	DB25 (Male)/CEN36 (Male)	6	Putty	18 Pairs x 28 AWG
45-1810		6 & 7	DB25 (Male)/CEN36 (Male)	10	Putty	18 Pairs x 28 AWG
45-1828		6 & 7	DB25 (Male)/CEN36 (Male)	25	Putty	18 Pairs x 28 AWG
45-1829		6 & 7	DB25 (Male)/CEN36 (Male)	50	Putty	18 Pairs x 28 AWG
45-1826		6 & 8	DB25 (Male)/half pitch CEN36 (Male)	6	Putty	18 Pairs x 28 AWG
45-1830		6 & 8	DB25 (Male)/half pitch CEN36 (Male)	10	Putty	18 Pairs x 28 AWG
45-2606		6 & 9	DB25 (Male)/DB25 (Female)	6	Putty	18 Pairs x 28 AWG
45-2610		6 & 9	DB25 (Male)/DB25 (Female)	10	Putty	18 Pairs x 28 AWG
45-2503		6	DB25 (Male)/DB25 (Male)	3	Putty	18 Pairs x 28 AWG
45-2506		6	DB25 (Male)/DB25 (Male)	6	Putty	18 Pairs x 28 AWG
45-2507		6	DB25 (Male)/DB25 (Male)	10	Putty	18 Pairs x 28 AWG
45-2525		6	DB25 (Male)/DB25 (Male)	25	Putty	18 Pairs x 28 AWG

USB to MOTHERBOARD and USB HUBS

Computer



Fig.1

USB Motherboard Adapter



Fig.3

Retail Part No.	Bulk Part No.	Figure No.	Description	Length (Feet)	Color	Cable
45-1422		1	USB Expansion Ports			2 USB (skt) on Brackets/IDC10F

USB 2.0

Retail Part No.	Bulk Part No.	Figure No.	Description	Length (Feet)	Color	Cable
45-1451		2	USB 2.0 Hub 4 Port			USB A to USB B
45-1452		3	USB 2.0 + IEEE-1394, Hub 7 Port			USB-A to USB-B/IEEE-1394 M/M

MONITOR/VIDEO CABLES



Fig.4



Fig.5



Fig.6



Fig.8



Fig.9



Fig.10

Super VGA Cables—Premium

Retail Part No.	Bulk Part No.	Figure No.(s)	Description	Length (Feet)	Color	Cable	Ferrite Bead
45-1866		4&5	HD15 (Male)/HD15 (Female)	6	Putty	8 x 24 AWG, 3 Coax x 28 AWG	Yes
45-1880		4&5	HD15 (Male)/HD15 (Female)	10	Putty	8 x 24 AWG, 3 Coax x 28 AWG	Yes
45-1876		4	HD15 (Male)/HD15 (Male)	6	Putty	8 x 24 AWG, 3 Coax x 28 AWG	Yes
45-1870		4	HD15 (Male)/HD15 (Male)	10	Putty	8 x 24 AWG, 3 Coax x 28 AWG	Yes

Super VGA Cables—High Quality

Retail Part No.	Bulk Part No.	Figure No.(s)	Description	Length (Feet)	Color	Cable	Ferrite Bead
45-1846		4&5	HD15 (Male)/HD15 (Female)	6	Black	8 x 24 AWG, 3 Coax x 28 AWG	No
45-1838		4&5	HD15 (Male)/HD15 (Female)	10	Black	8 x 24 AWG, 3 Coax x 28 AWG	No
45-1845		4&5	HD15 (Male)/HD15 (Female)	25	Black	8 x 24 AWG, 3 Coax x 28 AWG	No
45-1860		4&5	HD15 (Male)/HD15 (Female)	50	Black	8 x 24 AWG, 3 Coax x 28 AWG	No
45-1836		4	HD15 (Male)/HD15 (Male)	6	Black	8 x 24 AWG, 3 Coax x 28 AWG	No
45-1839		4	HD15 (Male)/HD15 (Male)	10	Black	8 x 24 AWG, 3 Coax x 28 AWG	No
45-1841		4	HD15 (Male)/HD15 (Male)	25	Black	8 x 24 AWG, 3 Coax x 28 AWG	No
45-1850		4	HD15 (Male)/HD15 (Male)	50	Black	8 x 24 AWG, 3 Coax x 28 AWG	No

VGA Cables

Retail Part No.	Bulk Part No.	Figure No.(s)	Description	Length (Feet)	Color	Cable	Ferrite Bead
45-435		4&5	HD15 (Male)/HD15 (Female)	6	Putty	14 x 28 AWG	No
64-4016		4&5	HD15 (Male)/HD15 (Female)	10	Putty	14 x 28 AWG	No
45-476		4	HD15 (Male)/HD15 (Male)	6	Putty	14 x 28 AWG	No

RGB Specialty Monitor Cables

Retail Part No.	Bulk Part No.	Figure No.(s)	Description	Length (Feet)	Color	Cable	Ferrite Bead
45-416		7&8	Video 8 (Male)/DB9 (Male)	4	Putty	8 x 28 AWG Stranded	No
45-1505		6	(5) BNC (Male)/(5) BNC (Male)	6	Black	5 x 28 AWG Mini-Coax	No
45-1509		8&6	DB9 (Male)/(4) BNC (Male) (Does not include yellow wire & connector)	6	Black	4 x 28 AWG Mini-Coax	No
45-1840		4&6	HD15 (Male)/(5) BNC (Male)	6	Putty	5 x 28 AWG Mini-Coax	Yes

DVI Cables

Retail Part No.	Bulk Part No.	Figure No.(s)	Description	Length (Feet)	Color	Cable	Ferrite Bead
45-308		8&9	DB9 (Male)/DB9 (Female)	6	Putty	9c x 28 AWG	No
45-314		8&9	DB9 (Male)/DB9 (Female)	10	Putty	9c x 28 AWG	No
45-315		8	DB9 (Male)/DB9 (Male)	6	Putty	9c x 28 AWG	No
45-316		8	DB9 (Male)/DB9 (Male)	10	Putty	9c x 28 AWG	No
45-318		8&10	DB9 (Male)/DB9 (Female) without Thumb Screws	10	Putty	9c x 28 AWG	No

MONITOR/VIDEO ADAPTERS

Computer



Fig.1



Fig.2



Fig.3



Fig.4



Fig.5



Fig.6



Fig.7



Fig.8



Fig.9



Fig.10



Fig.11



Fig.12

Monitor Adapters

Retail Part No.	Bulk Part No.	Figure No.(s)	Description	Length (Feet)	Color	Cable
45-590	45-590-BU	1	Adapter DB9 (Female)/HD15 (Female)		Gray	
45-591	45-591-BU	2	Adapter DB9 (Female)/HD15 (Male)		Putty	
45-592	45-592-BU	3	Adapter DB9 (Male)/HD15 (Female)		Putty	
45-593	45-593-BU	4	Adapter DB9 (Male)/HD15 (Male)		Putty	
45-652		5	Adapter DB25 (Male)/HD15 (Male)		Putty	

Monitor "Y" Adapter Cable

Retail Part No.	Bulk Part No.	Figure No.(s)	Description	Length (Feet)	Color	Cable
45-569		6	HD15 (Male)/HD15 (Female) (2)	2	Putty	15 x 28 AWG

Monitor Adapter Cables

Retail Part No.	Bulk Part No.	Figure No.(s)	Description	Length (Feet)	Color	Cable
45-437		7&8	DB9 (Male)/HD15 (Male)	6	Putty	9 x 28 AWG
45-438		9&10	DB9 (Female)/HD15 (Female)	6	Putty	9 x 28 AWG

Monitor Power and Adapter Cables

Retail Part No.	Bulk Part No.	Figure No.(s)	Description	Length (Feet)	Color	Cable
45-401		11,12	Shrouded (Male)/AC Molded (Female)	1	Black	3 x 18 AWG
45-408		11,12	Shrouded (Male)/AC Molded (Female)	6	Black	3 x 18 AWG
45-409		12,11	AC Molded (Female)/Shrouded (Male)	12	Black	3 x 18 AWG

Joystick "Y" Adapter Cable

Retail Part No.	Bulk Part No.	Figure No.(s)	Description	Length (Feet)	Color	Cable
45-566		13	DB15 (Male)/DB15 (Female) (2)	6	Black	10 x 26 AWG



Fig.1



Fig.2



Fig.3



Fig.4



Fig.5

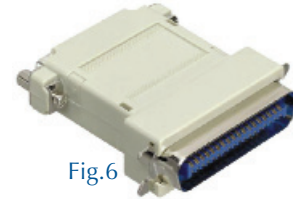


Fig.6

Standard Parallel Printer Cables

Retail Part No.	Bulk Part No.	Figure No.(s)	Description	Length (Feet)	Color	Cable
45-231		1 & 2	DB25 (Male)/CEN36 (Male), UL	6	Putty	25 x 28 AWG
45-234		1 & 2	DB25 (Male)/CEN36 (Male), UL	10	Putty	25 x 28 AWG
45-202		1 & 2	DB25 (Male)/CEN36 (Male)	2	Putty	25 x 28 AWG
45-201		1 & 2	DB25 (Male)/CEN36 (Male)	6	Putty	25 x 28 AWG
45-4424		1 & 2	DB25 (Male)/CEN36 (Male), Premium	7	Putty	25 x 28 AWG
45-204		1 & 2	DB25 (Male)/CEN36 (Male)	10	Putty	25 x 28 AWG
45-381		1 & 2	DB25 (Male)/CEN36 (Male)	15	Putty	25 x 28 AWG
45-206		1 & 2	DB25 (Male)/CEN36 (Male)	25	Putty	25 x 28 AWG
45-210		1 & 3	DB25 (Male)/CEN36 (Male), 90°	6	Putty	25 x 28 AWG
45-213		1 & 3	DB25 (Male)/CEN36 (Male), 90°	10	Putty	25 x 28 AWG

Parallel Extension Cables

Retail Part No.	Bulk Part No.	Figure No.(s)	Description	Length (Feet)	Color	Cable
45-710		2 & 4	CEN36 (Male)/CEN36 (Female)	6	Putty	25 x 28 AWG
45-715		2 & 4	CEN36 (Male)/CEN36 (Female)	10	Putty	25 x 28 AWG
45-700		2	CEN36 (Male)/CEN36 (Male)	6	Putty	25 x 28 AWG
45-705		2	CEN36 (Male)/CEN36 (Male)	10	Putty	25 x 28 AWG

Parallel Print Adapters

Retail Part No.	Bulk Part No.	Figure No.(s)	Description	Length (Feet)	Color	Cable
45-595	45-595-BU		DB25 (Female)/CEN36 (Female) Adapter		Gray	
45-597	45-597-BU	5	DB25 (Male)/CEN36 (Female) Adapter		Gray	
45-598	45-598-BU	6	DB25 (Female)/CEN36 (Male) Adapter		Putty	



Fig.7



Fig.8



Fig.9



Fig.10



Fig.11

DB9 Series

Retail Part No.	Bulk Part No.	Figure No.(s)	Description	Protocol	Length (Feet)	Color	Cable
45-308		7 & 8	DB9 (Male)/DB9 (Female)	RS-232	6	Putty	9 x 28 AWG
45-309		8	DB9 (Female)/DB9 (Female)	RS-232	6	Putty	9 x 28 AWG
45-314		7 & 8	DB9 (Male)/DB9 (Female)	RS-232	10	Putty	9 x 28 AWG
45-306		7 & 8	DB9 (Male)/DB9 (Female)	RS-232	25	Putty	9 x 28 AWG
45-315		7	DB9 (Male)/DB9 (Male)	RS-232	6	Putty	9 x 28 AWG
45-316		7	DB9 (Male)/DB9 (Male)	RS-232	10	Putty	9 x 28 AWG
45-317		7	DB9 (Male)/DB9 (Male)	RS-232	25	Putty	9 x 28 AWG
45-302		7 & 9	DB9 (Male)/Strip End	RS-232	7	Putty	9 x 28 AWG
45-303		8 & 9	DB9 (Female)/Strip End	RS-232	7	Putty	9 x 28 AWG

DB15 Series

Retail Part No.	Bulk Part No.	Figure No.(s)	Description	Protocol	Length (Feet)	Color	Cable
45-1556		10&11	DB15 (Male)/DB15 (Female)	RS-422	6	Beige	15 x 28 AWG
45-230		10&11	DB15 (Male)/DB15 (Female)	RS-422	8	Beige	15 x 28 AWG
45-332		10&11	DB15 (Male)/DB15 (Female)	RS-422	10	Beige	15 x 28 AWG
45-1566		10	DB15 (Male)/DB15 (Male)	RS-422	6	Beige	15 x 28 AWG
45-1558		10	DB15 (Male)/DB15 (Male)	RS-422	10	Beige	15 x 28 AWG

SERIAL DATA CABLES (Cont.)

Computer



Fig.1



Fig.2



Fig.3



Fig.4

DB25 Series

Retail Part No.	Bulk Part No.	Figure No.(s)	Description	Protocol	Length (Feet)	Color	Cable
45-371		1	DB25 (Female)/DB25 (Female)	RS-232	6	Putty	25 x 28 AWG
45-373		1	DB25 (Female)/DB25 (Female)	RS-232	10	Putty	25 x 28 AWG
45-372		1	DB25 (Female)/DB25 (Female)	RS-232	15	Putty	25 x 28 AWG
45-358		1&2	DB25 (Female)/DB25 (Male)	RS-232	2	Putty	25 x 28 AWG
45-379		1&2	DB25 (Female)/DB25 (Male)	RS-232	6	Putty	25 x 28 AWG
45-374		1&2	DB25 (Female)/DB25 (Male)	RS-232	10	Putty	25 x 28 AWG
45-1555		1&2	DB25 (Female)/DB25 (Male)	RS-232	15	Putty	25 x 28 AWG
45-375		1&2	DB25 (Female)/DB25 (Male)	RS-232	25	Putty	25 x 28 AWG
45-355		1&2	DB25 (Female)/DB25 (Male)	RS-232	50	Putty	25 x 28 AWG
45-356		1&2	DB25 (Female)/DB25 (Male)	RS-232	100	Putty	25 x 28 AWG
45-1502		2	DB25 (Male)/DB25 (Male)	RS-232	2	Putty	25 x 28 AWG
45-376		2	DB25 (Male)/DB25 (Male)	RS-232	6	Putty	25 x 28 AWG
45-4363		2	DB25 (Male)/DB25 (Male)-Premium	RS-232	5	Putty	25 x 26 AWG
45-4364		2	DB25 (Male)/DB25 (Male)-Premium	RS-232	10	Putty	25 x 26 AWG
45-4366		2	DB25 (Male)/DB25 (Male)	RS-232	25	Putty	25 x 28 AWG
45-377		2	DB25 (Male)/DB25 (Male)	RS-232	10	Putty	25 x 28 AWG
45-378		2	DB25 (Male)/DB25 (Male)	RS-232	25	Putty	25 x 28 AWG
45-357		2	DB25 (Male)/DB25 (Male)	RS-232	50	Putty	25 x 28 AWG
45-369		2	DB25 (Male)/DB25 (Male)	RS-232	100	Putty	25 x 28 AWG

DB37 Series

Retail Part No.	Bulk Part No.	Figure No.(s)	Description	Protocol	Length (Feet)	Color	Cable
45-463		3&4	DB37 (Male)/DB37 (Female)	RS-449	3	Putty	37 x 28 AWG
45-466		3&4	DB37 (Male)/DB37 (Female)	RS-449	6	Putty	37 x 28 AWG

SCSI CABLES, ADAPTERS & TERMINATORS



Fig.7



Fig.8



Fig.9



Fig.10

SCSI 1 Cables

Retail Part No.	Bulk Part No.	Figure No.(s)	Description	Length (Feet)	Color	Conductor	Type
45-873		7&8	CEN50 (Male)/CEN50 (Female)	3		25 x 28 AWG	SCSI 1-SCSI 1
45-856		7	CEN50 (Male)/CEN50 (Male)	6	Putty	25 x 28 AWG	SCSI 1-SCSI 1

SCSI 2 Cables

Retail Part No.	Bulk Part No.	Figure No.(s)	Description	Length (Feet)	Color	Conductor	Type
45-890		9	Half Pitch DB50 (Male)/Half Pitch DB50 (Male)	6	Putty	25 Pairs x 28 AWG	SCSI 2-SCSI 2

SCSI 3 Cables

Retail Part No.	Bulk Part No.	Figure No.(s)	Description	Length (Feet)	Color	Conductor	Type
45-803		10	Half Pitch DB68 (Male)/(Male)	3	Putty		SCSI 3-SCSI 3
45-877		10&7	Half Pitch DB68 (Male)/CEN50 (Male)	6	Putty	25 Pairs x 28 AWG	SCSI 3-SCSI 1
45-906		10&9	Half Pitch DB68 (Male)/Half Pitch DB50 (Male)	3	Putty	25 Pairs x 28 AWG	SCSI 3-SCSI 2

SCSI CABLES, ADAPTERS & TERMINATORS (Cont.)



Fig.2

SCSI Adapters

Retail Part No.	Bulk Part No.	Figure No.(s)	Description	Length (Feet)	Color	Conductor	Type
45-6832		2	Half Pitch DB68 (Male)/IDC 50 (Male) for ribbon cable		Black		SCSI 3

KEYBOARD CABLES & ADAPTERS



Fig.9

Fig.10

Fig.11

Fig.12

Fig.13

Fig.14

Fig.15

Keyboard Extension & Replacement Cables

Retail Part No.	Bulk Part No.	Figure No.(s)	Description	Length (Feet)	Color	Cable
45-405		9&10	DIN5 (Male)/DIN5 (Female)-Straight	6	Putty	5 x 28 AWG
45-4410		9&10	DIN5 (Male)/DIN5 (Female)-Straight	10	Putty	5 x 28 AWG
45-4510	45-4510-BU	9	DIN5 (Male)/DIN5 (Male)-Straight	10	Putty	5 x 28 AWG
64-4407		9	DIN5 (Male)/DIN5 (Male)-Straight	6	Putty	5 x 28 AWG

Keyboard Adapters

Retail Part No.	Bulk Part No.	Figure No.(s)	Description	Length (Feet)	Color	Cable
45-571		9&12	DIN5 (Male)/MD6 (Female)		Putty	4 x 28 AWG
45-570		10&11	DIN5 (Female)/MD6 (Male)	0.5	Putty	4 x 28 AWG
45-573		13	DIN5 (Female)/MD6 (Male)		Putty	

Keyboard "Y" Adapter

Retail Part No.	Bulk Part No.	Figure No.(s)	Description	Length (Feet)	Color	Cable
45-568		14	MD6 (Male)/(2) MD6 (Female)	0.5	Putty	4 x 28 AWG

IBM PS2® Keyboard Cables

Retail Part No.	Bulk Part No.	Figure No.(s)	Description	Length (Feet)	Color	Cable
45-4605		11&12	MD6 (Male)/MD6 (Female) Coiled	6	Putty	6 x 28 AWG Coiled
45-430		11	MD6 (Male)/MD6 (Male)	6	Putty	6 x 28 AWG
45-431		11&12	MD6 (Male)/MD6 (Female)	6	Putty	6 x 28 AWG
45-4606		15	MD6 (Male)/MD6 (Male)	6	Putty	6 x 28 AWG
45-433		11	MD6 (Male)/MD6 (Male)	8	Putty	6 x 28 AWG
45-4610		11	MD6 (Male)/MD6 (Male)	10	Putty	6 x 28 AWG
45-432		11&12	MD6 (Male)/MD6 (Female)	12	Putty	6 x 28 AWG
45-4625		11&12	MD6 (Male)/MD6 (Female)	25	Putty	6 x 28 AWG

SPECIALTY CABLES & ADAPTERS

Computer



Fig.1



Fig.2



Fig.3



Fig.4



Fig.5



Fig.6

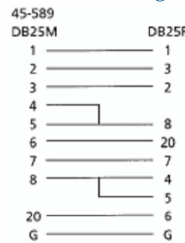


Fig.8



Fig.10

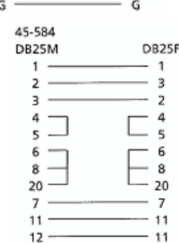
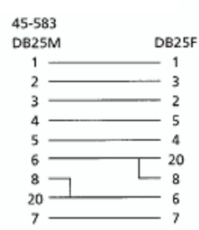


Fig.14

IBM®-AT, PS®/2 & Compatible Adapter Cables

Retail Part No.	Bulk Part No.	Figure No.	Description	Length (Feet)	Color	Cable
45-391		1	AT Ser Cable DB9 (Female)/DB25 (Male)	6	Putty	7 x 28 AWG
45-4427		1	Modem Cable DB9 (Female)/DB25 (Male)	6	Putty	7 x 28 AWG
45-320		1	Modem Cable DB9 (Female)/DB25 (Male)	6	Putty	7 x 28 AWG
45-321		1	Modem Cable DB9 (Female)/DB25 (Male)	10	Putty	7 x 28 AWG

Null Modem Cables

Retail Part No.	Bulk Part No.	Figure No.	Description	Length (Feet)	Color	Cable
45-389		2	DB9 (Female)/DB9 (Female)	6	Putty	7 x 28 AWG
45-390		3	DB9 (Male)/DB9 (Male)	10	Putty	7 x 28 AWG
45-393		4	DB25 (Male)/DB25 (Female)	6	Putty	9 x 28 AWG
45-395		4	DB25 (Male)/DB25 (Female)	10	Putty	9 x 28 AWG
45-394		5	DB25 (Male)/DB25 (Male)	10	Putty	9 x 28 AWG

Null Modem Adapters

Retail Part No.	Bulk Part No.	Figure No.	Description	Length (Feet)	Color	Cable
45-589		6	DB25 (Male)/DB25 (Female)		Putty	
45-582	45-582-BU	6	DB25 (Male)/DB25 (Female) Standard		Putty	
45-583	45-583-BU	6	DB25 (Male)/DB25 (Female) Full Handshake		Putty	
45-584	45-584-BU	6	DB25 (Male)/DB25 (Female) No Handshake		Putty	

Apple® Computer Cables

Retail Part No.	Bulk Part No.	Figure No.	Description	Length (Feet)	Color	Cable
45-815		8	MD-8 (Male)/MD-8 (Female)	10	Gray	
45-805		10	MD-8 (Male)/MD-8 (Male)	10	Gray	
45-840		10	MD-8 (Male)/MD-8 (Male)	8.5	Gray	

Lap-Link™ Cable

Retail Part No.	Bulk Part No.	Figure No.	Description	Length (Feet)	Color	Cable
45-730		14	DB25 (M)/(M), DB25 (F)/(F), DB9 (F)/(F) (6 Ended)	6	Gray	28 AWG

MOUSE ADAPTERS



Fig.1



Fig.2



Fig.3



Fig.4



Fig.5

Mouse Adapters

Retail Part No.	Bulk Part No.	Figure No.(s)	Description	Length (Feet)	Color
45-574		1	MAC® Mouse to IBM® AT, DB9 (Male)/MD8 (Female)		Putty
45-577		2	Serial Mouse to MAC®, DB9 (Male)/MD8 (Male)		Putty
45-578		3	Serial Mouse to PS/2 DB9 (Male)/MD6 (Male)		Putty
45-579		4	PS/2 Mouse to IBM® AT, DB9 (Female)/MD6 (Female)		Putty
45-888		5	Serial Mouse to PS/2, DB9 (Male)/MD6 (Male)	0.5	Putty

INTERNAL CABLES



Fig.7



Fig.8



Fig.9



Fig.10

Internal Drive Cables

Retail Part No.	Bulk Part No.	Figure No.	Length (Inches)	Description
45-893		7	18	Hard Disk Drive IDC40 (Female)/(1) IDC40 (Female)
45-894		7	24	Hard Disk Drive IDC40 (Female)/(2) IDC40 (Female)
45-895		8	32	Floppy Drive (2) Card Edged 34(Female)/(3) IDC34 (Female)

Power Splitters

Retail Part No.	Bulk Part No.	Figure No.	Length (Inches)	Description
45-4102		9	6	(1) 5.25" (Male)/(1) 5.25" (Female) + (1) 3.5" (Female)
45-4103		9	12	(1) 5.25" (Male)/(2) 3.5" (Female)
45-410		10	6	(1) 5.25" (Male)/(2) 5.25" (Female)
45-4104		10	12	(1) 5.25" (Male)/(2) 5.25" (Female)

5-Piece Motherboard Cable Set

Retail Part No.	Bulk Part No.	Figure No.	Description
45-235		11	DB25 (M)/IDC10 (F) 12", DB9 (M)/IDC10 (F) 12", DB25 (F)/IDC26 (F) 12", IDC34 (F)/(2) IDC34 (F) 24", IDC40 (F)/(2) IDC40 (F) 18"



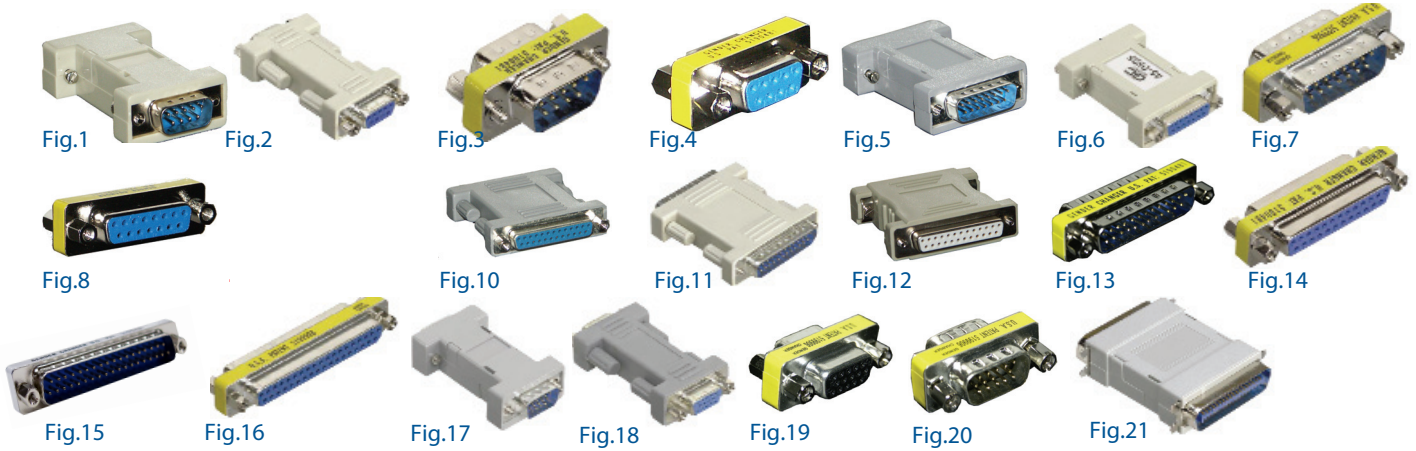
Fig.11a

Fig.11b

Fig.11

GENDER CHANGERS

Computer



Gender Changers

Retail Part No.	Bulk Part No.	Figure No.	Description	Length (Inches)	Color	Type
45-510	45-510-BU	1	DB9 (Male)/(Male)	2.490	Putty	Full Size
45-515	45-515-BU	2	DB9 (Female)/(Female)	2.490	Putty	Full Size
45-517	45-517-BU	3	DB9 (Male)/(Male)	0.690	Yellow	Low Profile
45-518	45-518-BU	4	DB9 (Female)/(Female)	0.690	Yellow	Low Profile
45-520	45-520-BU	5	DB15 (Male)/(Male)	2.500	Putty	Full Size
45-525	45-525-BU	6	DB15 (Female)/(Female)	2.440	Putty	Full Size
45-527	45-527-BU	7	DB15 (Male)/(Male)	0.707	Yellow	Low Profile
45-528	45-528-BU	8	DB15 (Female)/(Female)	0.690	Yellow	Low Profile
45-4100		9	DB25 (Male)/(Male)	2.500	Putty	Double Shielded
45-4101		10	DB25 (Female)/(Female)	2.500	Putty	Double Shielded
45-500	45-500-BU	11	DB25 (Male)/(Male)	2.150	Putty	Full Size
45-505	45-505-BU	12	DB25 (Female)/(Female)	2.160	Putty	Full Size
45-507	45-507-BU	13	DB25 (Male)/(Male)	0.690	Yellow	Low Profile
45-508	45-508-BU	14	DB25 (Female)/(Female)	0.700	Yellow	Low Profile
45-540	45-540-BU	15	DB37 (Male)/(Male)	0.709	Yellow	Low Profile
45-543	45-543-BU	16	DB37 (Female)/(Female)	0.697	Yellow	Low Profile
45-560	45-560-BU	17	HD15 (Male)/(Male)	2.500	Gray	Full Size
45-561	45-561-BU	18	HD15 (Female)/(Female)	2.500	Gray	Full Size
45-564	45-564-BU	19	HD15 (Female)/(Female)	0.695	Yellow	Low Profile
45-521	45-521-BU	20	HD15 (Male)/(Male)	0.715	Yellow	Low Profile

PORT ADAPTERS



Port Adapters

Retail Part No.	Bulk Part No.	Figure No.	Description	Length (Inches)	Color	Type
45-2509		23	DB9 (Female)/DB25 (Female)	0.720	Orange	Low Profile Serial
45-2510		24	DB9 (Male)/DB25 (Female)	0.720	Orange	Low Profile Serial
45-2511		25	DB9 (Female)/DB25 (Male)	0.720	Orange	Low Profile Serial
45-2512		26	DB9 (Male)/DB25 (Male)	0.719	Orange	Low Profile Serial
45-512		27	DB9 (Male)/DB25 (Female)	2.410	Putty	Full Size
45-585	45-585-BU	28	DB9 (Female)/DB25 (Male)	2.835	Gray	Full Size, PC-Modem
45-586	45-586-BU	29	DB9 (Female)/DB25 (Male)	2.406	Putty	Full Size, PC-Serial Printer
45-588	45-588-BU	30	DB9 (Female)/DB25 (Male)	2.425	Putty	Full Size, Straight Through



Port Protectors

Retail Part No.	Bulk Part No.	Figure No.	Description	Length (Inches)	Color	Type
45-506	45-506-BU	1	DB25 (Male)/(Female)	2.500	Putty	Full Size
45-509	45-509-BU	2	DB25 (Male)/(Female)	0.700	Yellow	Low Profile
45-516	45-516-BU	3	DB9 (Male)/(Female)	2.220	Putty	Full Size
45-519	45-519-BU	4	DB9 (Male)/(Female)	0.696	Yellow	Low Profile
45-526	45-526-BU	5	DB15 (Male)/(Female)	2.440	Gray	Full Size
45-545	45-545-BU	6	DB37 (Male)/(Female)	0.697	Yellow	Low Profile
45-562	45-562-BU	7	HD15 (Male)/(Female)	2.500	Gray	Full Size
45-563	45-563-BU	8	HD15 (Male)/(Female)	0.700	Yellow	Low Profile

DATA SWITCHES



Fig.12

Fig.13



Fig.14



Fig.17

Front View

"D-Sub" Type Manual Switches

Retail Part No.	Bulk Part No.	Figure No.	Description	Port Nos.	Color	Wiring
45-2221		12	Bi-directional DB25 A/B/C/D	4	Putty	Straight Through
64-2001		13	DB25 A/B	2	Putty	Straight Through
45-2002		14	DB25 A/B/C	3	Putty	Straight Through
45-2006		17	DB25 A/B/C/D/E	5	Putty	Straight Through



Fig.18



Fig.22

"D-Sub" Type Automatic Switches

Retail Part No.	Bulk Part No.	Figure No.	Description	Port Nos.	Color	Wiring
45-2222		18	DB25 Auto Switch, A/B, Directional	2	Putty	Straight Through
45-2580		22	8-way Auto Switch, DB25	8	Putty	Straight Through