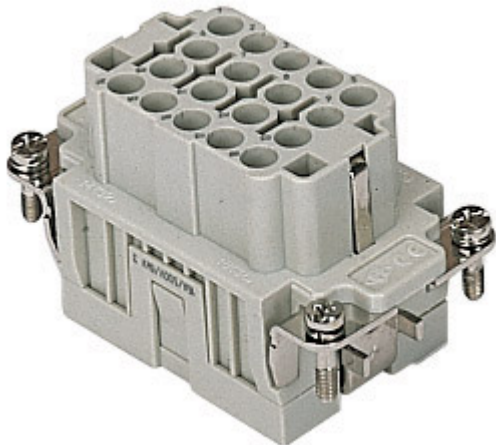



Item code

CQEF 18



Brief description:

female insert, 18 poles + PE, crimp connections, 16A 500V, 6kV, 3, size "57.27", CLASS insert series

Product description	
Model	female insert
Version	crimp connections
Series	CQE
Product type	for female contacts 16A
Family	CLASS inserts
Size	size "57.27"
N° of poles	18 poles + 
Technical data	
Current	16 A (A.C. and D.C.)
Voltage	500 V
Sustained impulse voltage	6kV
Pollution degree	3
Operating temperature range (min, max)	-50°C ... +70°C
Plugging cycles	≥ 200
IP degree of protection	IP20 without enclosure; IP65/IP66/IP67/IP68 with enclosure
Wire cross section PE	0,14 - 4 mm ² ; AWG 20 - 12
Other technical details	
Characteristics according to EN61984	16A 500V 6kV 3; 16A 830V 8kV 2
Insulation resistance	≥ 1 GΩ
Rated voltage according to UL/CSA	600V
UL 94 flammability rating	V-0
Weight	56,00 g

Approvals / Standards	
Reference standard	EN 61984 (2001-11)
Quality mark	   , EAC
Conformity	CQC, CE
General ordering information	
EAN code	8015747037068
Tariff number	85369095
Country of origin	Made in EU (IT)
ETIM classification	EC000438
Packaging Information	
Packaging length	210,00 mm
Packaging height	130,00 mm
Packaging width	240,00 mm
Packaging weight	1,94 kg
Packaging volume	6,55 dm ³
Packaging description	Carton box
Packaging quantity	30 Pcs
Packaging EAN code	8015747208796
Sub-packaging weight	0,32 kg
Sub-packaging description	Carton
Sub-packaging quantity	5 Pcs
Sub-packaging EAN barcode	8015747037075

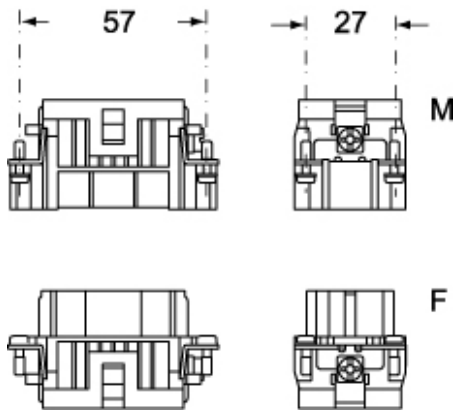
Item code

CQEF 18

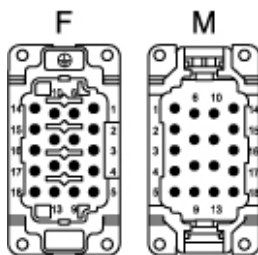


Catalogue drawings

CQEM 18

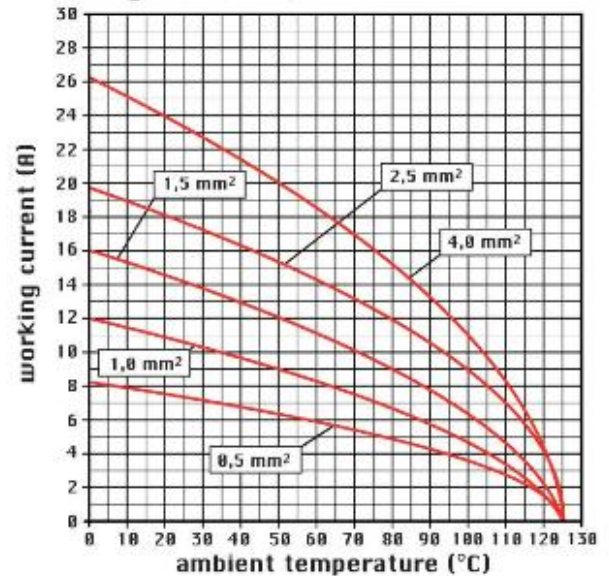


CQEF 18



Catalogue drawings

diagram CQE 18 poles



Notes

CQEF/M 18 inserts:

- characteristics according to EN 61984:
(16A 500V 6kV 3)
(16A 830V) 8kV 2)
- rated voltage according to UL/CSA: 600V
- insulation resistance: > 10 GOhm
- ambient temperature limit: -40 °C ... +125 °C
- are made of self-extinguishing thermoplastic resin UL 94 V0
- mechanical life: > 500 cycles
- contact resistance: < 1 mOhm
- for contact crimping instructions, please see the crimping tool section (16A contacts, CCF, CCM and CC...AN series) .
- enclosures: size "57.27":
C-TYPE IP65/IP66
C7 IP67 stainless steel lever
V-TYPE IP65/IP66
stainless steel lever
T-TYPE IP65 insulating
JEI zinc-plated steel lever
BIG hoods

- W-TYPE aggressive environments
- EMC
- central lever
- IP68
- panel supports: page:COB