



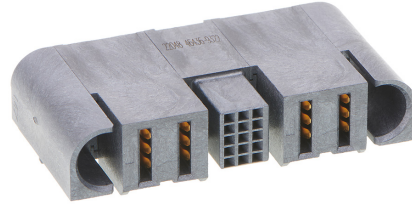
Part Number : [464369322](#)

Product Description : EXTreme Ten60Power Right-Angle Receptacle with Side Guides, 2 DC Power Circuits, 15 Signal Circuits, 2 DC Power Circuits, Press Fit Tail

Series Number : 46436

Status : Active

Product Category : Board-to-Board Connectors



Documents & Resources

Drawings

[Drawing 464369322_sd.pdf](#)

[Packaging Design Drawing 464361001-PK-000.pdf](#)

3D Models and Design Files

[3D Model 464369322_stp.zip](#)

Specifications

[Product Specification PS-46436-100-001.pdf](#)

[Test Summary 464361000-TS-000.pdf](#)

Product Environment Compliance

Compliance

China RoHS	Not Reviewed
EU ELV	Not Reviewed
Low-Halogen Status	Not Reviewed
REACH SVHC	Not Reviewed
EU RoHS	Not Reviewed

[Multiple Part Product Compliance Statements](#)

- Eu RoHS
- REACH SVHC
- Low-Halogen

[Multiple Part Industry Compliance Documents](#)

- IPC 1752A Class C
- IPC 1752A Class D

- Molex Product Compliance Declaration
- IEC-62474
- chemSHERPA (xml)

EU RoHS Certificate of Compliance

Part Details

General

Status	Active
Category	Board-to-Board Connectors
Series	46436
Description	EXTreme Ten60Power Right-Angle Receptacle with Side Guides, 2 DC Power Circuits, 15 Signal Circuits, 2 DC Power Circuits, Press Fit Tail
Application	Board-to-Board, Power, Signal
Comments	See Product Specification for details
Component Type	PCB Receptacle
Product Family	EXTreme Ten60 High-Power Connectors
Product Name	EXTreme Ten60Power
UPC	195842670891

Agency

UL	E29179
----	--------

Electrical

Current - Maximum per Contact	60.0A
Grounding to PCB	No
Voltage - Maximum	600V AC / 250V DC

Physical

Circuits (Loaded)	19
Circuits (maximum)	19
Color - Resin	Black
Durability (mating cycles max)	200
Flammability	94V-0

Glow-Wire Capable	No
Guide to Mating Part	Side, Yes
Keying to Mating Part	None
Lock to Mating Part	No
Mated Height	10.00mm
Material - Metal	High Conductivity Copper
Material - Plating Mating	Gold
Material - Plating Termination	Tin
Material - Resin	Liquid Crystal Polymer
Net Weight	18.198/g
Number of Rows	1, 5
Orientation	Right Angle
Packaging Type	Tray
PC Tail Length	2.50mm, 3.28mm
PCB Locator	Yes
PCB Retention	Yes
PCB Thickness - Recommended	1.58mm
Pitch - Mating Interface	2.00mm, 5.50mm
Plating min - Mating	0.762µm
Plating min - Termination	2.540µm
Polarized to Mating Part	Yes
Polarized to PCB	Yes
(p)ower-(s)ignal Configuration	2p - 15s - 2p
Stackable	No
Temperature Range - Operating	-40° to +105°C
Termination Interface Style	Through Hole - Compliant Pin

Mates With / Use With

Mates with Part(s)

Description	Part Number
EXTreme Ten60Power Right-Angle Plug with Side Guides, 2 DC Power Circuits, 15 Signal Circuits, 2 DC Power Circuits, Press Fit Tail	<u>0464379322</u>

This document was generated on Sep 26, 2023