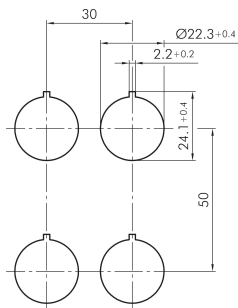
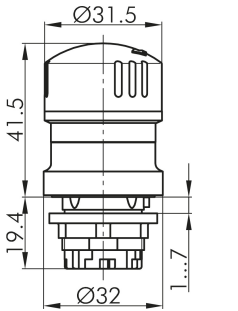




Emergency-stop Head QRUV

Description:

Category: Emergency-Stops
 Series: QUARTEX-R
 Panel cut-out: $\varnothing 22.3$ mm
 Degree of protection: IP65 / IP69k
 Switching function: maintained action
 Colour: yellow
 component colour: front bezel
 Colour 2: red
 component colour 2: mushroom head
 operating temperature: $-30^{\circ}\text{C} \dots 70^{\circ}\text{C}$
 mechanical life: 50,000
 storage temperature: $-50^{\circ}\text{C} \dots 85^{\circ}\text{C}$
 Shape: round
 foolproof: Yes
 switching position indicator: Yes
 release: twist right or left



design award
 winner
2004