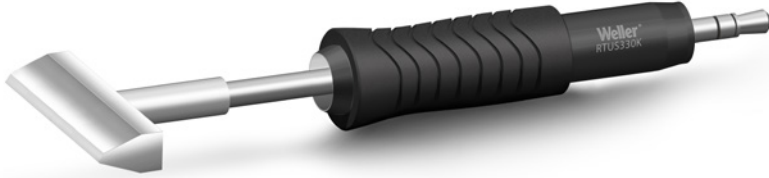




## SMART Ultra



## RTUS 330 K MS

CHISEL TIP

33,0 MM

ORDER NO:T0050114199

Production within the electronics, medical technology and aerospace industries is moving faster than ever before, as components become more powerful. With a new generation of RTUS MS SmartTips, Weller meets these increasing demands with its Smart Tips that include an integrated chip in every soldering tip, which offer many new features to the user. Lock functions make the soldering processes repeatable and transparent. Weller offers high power smart soldering tips for heavy duty and large applications. Multilayers can be soldered safely.

## + KEY FEATURES

- > **RTUS 330 K MS**  
Chisel tip 33,0 mm / 150 W
- > **MIL-SPEC**  
(IPC - TM-650 2.5.33)
- > **TOOL COMPATIBILITY**  
For use with WXUPS MS smart soldering iron and WXsmart soldering station
- > **PERFECT FOR HEAVY-DUTY SOLDERING APPLICATIONS**  
The WXUPS uses Thermal Core Technology for optimized heat transfer through the joint, with 150W performance for maximum power. It covers heavy-duty applications with large component sizes from 1612 and bigger (XL to XXL)
- > **EXTREMELY FAST 7-SECOND HEAT-UP TIME FOR HEAVY-DUTY APPLICATIONS**  
Weller's active tip technology (cartridge) provide an optimized heat transfer with 150 W maximum power, 24V performance. The extremely fast 7-second heat-up time delivers excellent heat transfer and recovery time during the soldering process for a high-performance continuous workflow.
- > **MAXIMUM PRECISION**  
Short tip-to-grip distance and optimized shape provides maximum precision during the soldering process.
- > **THERMAL CORE TECHNOLOGY PROVIDES HIGH POWER AT THE TIP POINT**  
150 W delivers maximum power through the joint so even multilayer boards can be soldered precisely
- > **CLEAR IDENTIFICATION OF SMART TIPS**  
The Weller WXsmart soldering station identifies each RTUS cartridge tip automatically
- > **FULL PROCESS CONTROL WITH TIP LOCK FUNCTION**  
Locked parameters on tip allows full process control and prevents for default during the soldering process
- > **FULL TRACEABILITY WITH TIP ID NUMBER AND INTEGRATED DATA STORAGE**  
Each smart soldering tip has a unique individual serial number for full traceability. The integrated data storage provides full traceability of calibration history
- > **ACCURATE DATA RESULTS WITH TIP-OFFSET FUNCTION**  
Using the Tip Offset Function, you can easily change the reference point of the sensor. Just add the measured positional offset value and the sensor's origin will be translated and reset. Tip Offset provides a simple way to get the best results and achieve the highest degree of accuracy.
- > **FAST, SAFE AND EASY TIP EXCHANGE**  
The patented Weller RT US smart cartridge tips can be changed quickly without the need of any additional tool, despite hot temperature conditions.
- > **MAXIMUM PROTECTION**  
The RTUS smart soldering tips are fully compliant with IPC industry standards (IPC - TM-650 2.5.33 Measurement of Electrical Overstress from Soldering Hand Tools) and are also MIL-SPEC compliant. This provides maximum protection to both the printed circuit board and components, achieving excellent results, while keeping operating costs low.

