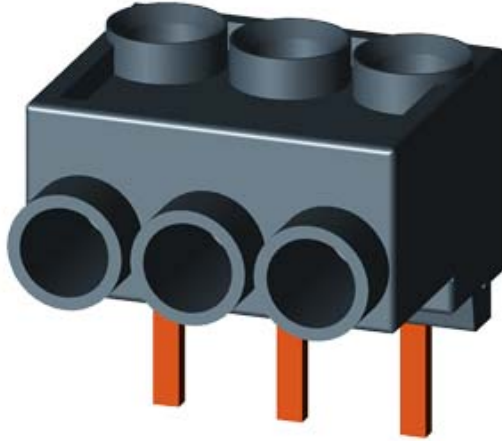


3-PHASE FEEDER TERMINAL FOR 3RT201.
CONTACTOR, SIZE S00



General technical data:

product brand name		SIRIUS
Product designation		3-phase infeed terminals
Size of contactor		S00
Protection class IP on the front		IP20
Ambient temperature		
• during storage	°C	-50 ... +80
• during operation	°C	-40 ... +60
Insulation voltage with degree of pollution 3 Rated value	V	690

Installation/ mounting/ dimensions:





Width	mm	25.9
Height	mm	30.4
Depth	mm	28.4

Connections/ Terminals:


Type of electrical connection		
• for main current circuit		screw-type terminals with box terminals

Certificates/ approvals:

Certificate of suitability		CE / UL / CSA / CCC
----------------------------	--	---------------------

General Product Approval			Declaration of Conformity	Test Certificates	Shipping Approval
 CSA	 UL		 EG-Konf.	Special Test Certificate	 ABS

Shipping Approval					
 BUREAU VERITAS	 DNV	 GL	 LRS	 PRS	 RINA

Shipping Approval	other		
 RMRS	Declaration of Conformity	Environmental Confirmations	other

Further information

Information- and Downloadcenter (Catalogs, Brochures,...)

<http://www.siemens.com/industrial-controls/catalogs>

Industry Mall (Online ordering system)

<http://www.siemens.com/industrymall>

Cax online generator

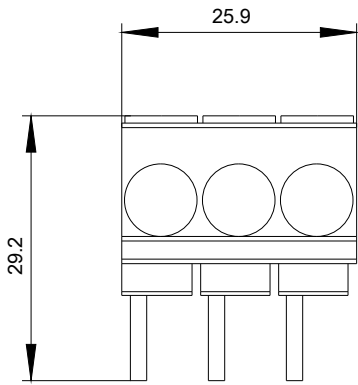
<http://support.automation.siemens.com/WW/CAXorder/default.aspx?lang=en&mlfb=3RA29133K>

Service&Support (Manuals, Certificates, Characteristics, FAQs,...)

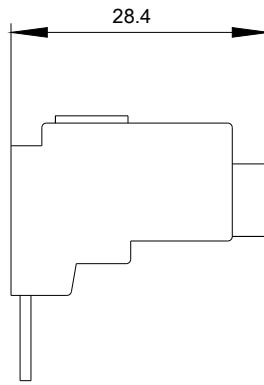
<http://support.automation.siemens.com/WW/view/en/3RA29133K/all>

Image database (product images, 2D dimension drawings, 3D models, device circuit diagrams, EPLAN macros, ...)

<http://www.automation.siemens.com/bilddb/index.aspx?attID9=3RA29133K&lang=en>



last modified:



09.03.2015