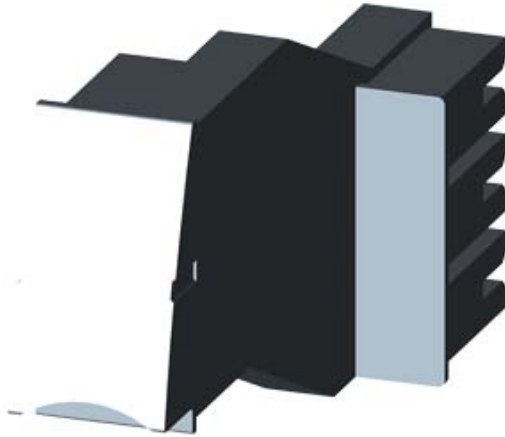


EXPANSION PLUG FOR INFEED SYSTEM 3RV19,
3RV29



General technical data:		
product brand name		SIRIUS
Product designation		Expansion connector for 3RV19 / 3RV29
Protection class IP		IP20
Degree of pollution		3
Installation altitude at height above sea level maximum	m	2 000
Ambient temperature		
• during transport	°C	-55 ... +80
• during storage	°C	-55 ... +80
• during operation	°C	-20 ... +60
Vibration resistance		f = 4 to 5.8 Hz; d = 15 mm; f = 5.8 to 500 Hz; a = 2 m / s ² 10 cycles
Shock resistance		Semi-sinusoidal a = 6 m/s ² at 10 ms; 3 pos. and 3 neg. Shock in all axes
Equipment marking acc. to DIN EN 61346-2		X
Equipment marking acc. to DIN 40719 extended according to IEC 204-2 acc. to IEC 750		X

Main circuit:		
Operating current with AC at 400 V Rated value	A	63

Installation/ mounting/ dimensions:		
Mounting type		plug-in fixing
Width	mm	40
Height	mm	55
Depth	mm	100

Certificates/ approvals:

General Product Approval	EMC	Shipping Approval
--------------------------	-----	-------------------



Shipping Approval	other
-------------------	-------



LRS



PRS



RINA



RMRS

[Declaration of Conformity](#)

[Environmental Confirmations](#)

other

[other](#)

Safety related data:

Protection against electrical shock	finger-safe
-------------------------------------	-------------

Further information

Information- and Downloadcenter (Catalogs, Brochures,...)

<http://www.siemens.com/industrial-controls/catalogs>

Industry Mall (Online ordering system)

<http://www.siemens.com/industrymall>

Cax online generator

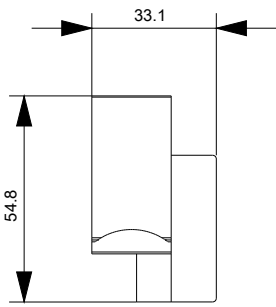
<http://support.automation.siemens.com/WW/CAXorder/default.aspx?lang=en&mlfb=3RA68901AA>

Service&Support (Manuals, Certificates, Characteristics, FAQs,...)

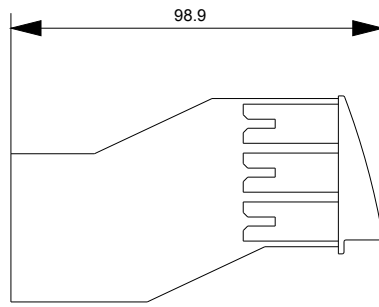
<http://support.automation.siemens.com/WW/view/en/3RA68901AA/all>

Image database (product images, 2D dimension drawings, 3D models, device circuit diagrams, EPLAN macros, ...)

<http://www.automation.siemens.com/bilddb/index.aspx?attID9=3RA68901AA&lang=en>



last modified:



09.03.2015