

Apparatus castors with perforated plate, rubber bandage TPE, light version, electrically conductive

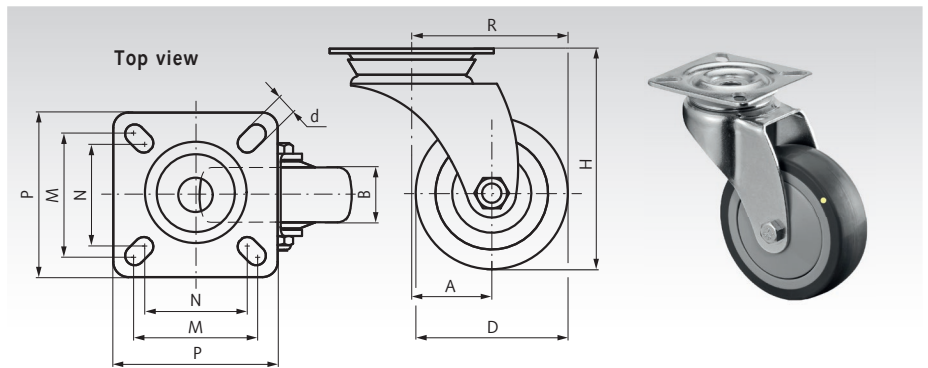
Swivel castors

Material: Fork: sheet steel, zinc-plated.
Tread: Thermoplastic rubber, grey, electrical conductive and antistatic ($10^4 \Omega$).
Wheel body: Plastic, screwed.
Wheel bearing: Ball bearing.
Swivel bearing: Double ball ring.

For indoor use. Low-noise operation with low rolling and swivelling resistance. Trackless. The tread is slightly oily and can cause contact discolouration on sensitive surfaces.

Temperature range: -20°C to $+60^\circ\text{C}$.

Ordering Details: e.g.: Product No. 777 100 50EL,
Swivel castor, TPE light, electrically conductive, D 50 mm



Product No.	D mm	B mm	H mm	A mm	R mm	d mm	P mm	M mm	N mm	Load capacity kg	Weight kg
777 100 50EL	50	18	73	26	51	6,3	54	40	34	50	0,18
777 100 75EL	75	24	103	38	75,5	6,3	60	48	38	60	0,28

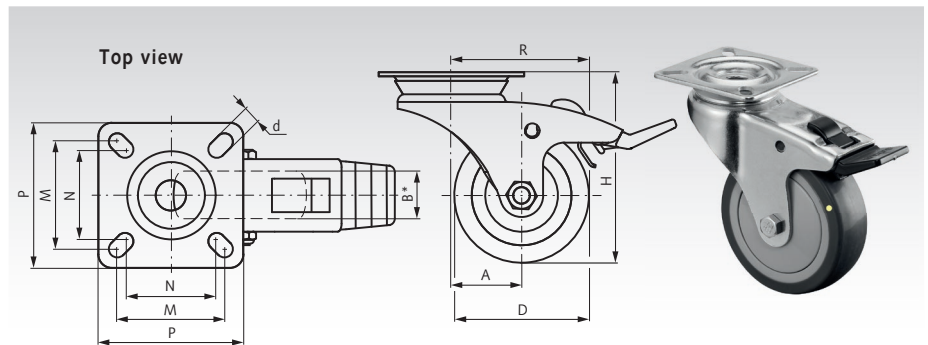
Swivel castors with brakes

Material: Fork: sheet steel, zinc-plated.
Tread: Thermoplastic rubber, grey, electrical conductive and antistatic ($10^4 \Omega$).
Wheel body: Plastic, screwed.
Wheel bearing: Ball bearing.
Swivel bearing: Double ball ring.

For indoor use. Low-noise operation with low rolling and swivelling resistance. Trackless. The tread is slightly oily and can cause contact discolouration on sensitive surfaces.

Temperature range: -20°C to $+60^\circ\text{C}$.

Ordering Details: e.g.: Product No. 777 110 50EL,
Swivel castor with brake, TPE light, electrically conductive, D 50 mm



Product No.	D mm	B mm	H mm	A mm	R mm	d mm	P mm	M mm	N mm	Load capacity kg	Weight kg
777 110 50EL	50	18	73	26	51	6,3	54	40	34	50	0,20
777 110 75EL	75	24	103	38	75,5	6,3	60	48	38	60	0,32

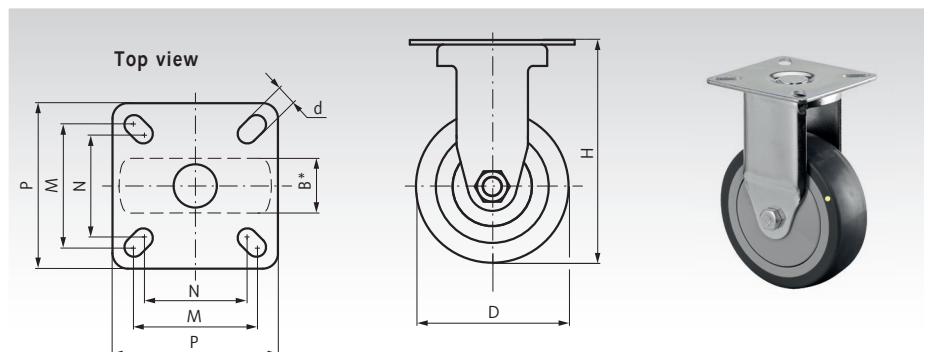
Fixed castors

Material: Fork: sheet steel, zinc-plated.
Tread: Thermoplastic rubber, grey, electrical conductive and antistatic ($10^4 \Omega$).
Wheel body: Plastic, screwed.
Wheel bearing: Ball bearing.

For indoor use. Low-noise operation with low rolling and swivelling resistance. Trackless. The tread is slightly oily and can cause contact discolouration on sensitive surfaces.

Temperature range: -20°C to $+60^\circ\text{C}$.

Ordering Details: e.g.: Product No. 777 120 50EL,
Fixed castor, TPE light, electrically conductive, D 50 mm



Product No.	D mm	B mm	H mm	d mm	P mm	M mm	N mm	Load capacity kg	Weight kg
777 120 50EL	50	18	73	6,3	54	40	34	50	0,14
777 120 75EL	75	24	103	6,3	60	48	38	60	0,24

* Wheel width

Note to electrical conductivity see page N11