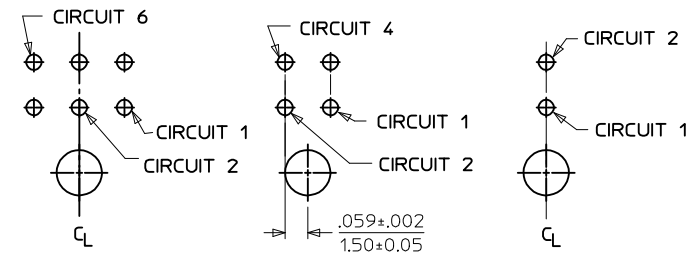


PCB LAYOUT: COMPONENT SIDE  
RECOMMEND PCB THICKNESS: .062/1.57



PCB LAYOUT: 6 CKT HEADER      PCB LAYOUT: 4 CKT HEADER      PCB LAYOUT: 2 CKT HEADER

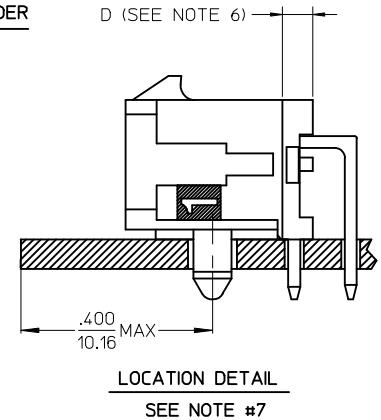
CKTS	A	B	C
02	.262 6.65	NA	NA
04	.380 9.65	.118 3.00	NA
06	.498 12.65	.236 6.00	NA
08	.616 15.65	.354 9.00	.185 4.70
10	.734 18.65	.472 12.00	.303 7.70
12	.852 21.65	.591 15.00	.421 10.70
14	.970 24.65	.709 18.00	.539 13.70
16	1.088 27.65	.827 21.00	.657 16.70
18	1.206 30.65	.945 24.00	.776 19.70
20	1.325 33.65	1.063 27.00	.894 22.70
22	1.443 36.65	1.181 30.00	1.012 25.70
24	1.561 39.65	1.299 33.00	1.130 28.70

NOTES:

- HOUSING MATERIAL: GLASS FILLED LIQUID CRYSTAL POLYMER, UL94V-0, COLOR: BLACK  
TERMINAL MATERIAL: BRASS ALLOY
- FINISH: A = .000060/(0.00152) MIN. REFLOWED MATTE TIN OVER  
.000050/(0.00127) MIN. NICKEL PLATE.  
(FINISH IS BRIGHT IN APPEARANCE. THICKNESS AS APPLIED PRIOR TO REFLOW)  
B = .00015/(0.00038) MIN. SELECT GOLD IN CONTACT AREA;  
.000100/(0.00254) MIN. SELECT MATTE TIN ON SOLDER TAILS,  
BOTH OVER .000050/(0.00127) MIN. NICKEL PLATE.  
C = .000030/(0.00076) MIN. SELECT GOLD IN CONTACT AREA;  
.000100/(0.00254) MIN. SELECT MATTE TIN ON SOLDER TAILS;  
BOTH OVER .000050/(0.00127) MIN. NICKEL PLATE.  
D = .000100/(0.00254) MIN. MATTE TIN OVER  
.000050/(0.00127) MIN. NICKEL OVERALL
- PRODUCT SPECIFICATION: PS-43045
- TRAY PACKAGED : SEE MOLEX DRAWING PK-70873-0313
- MATES WITH MICRO FIT (3.0) RECEPTACLE SERIES 43025
- CIRCUIT SIZES 2-6: 'D' IS .265/6.74 FOR .010/0.25 STEP.  
CIRCUIT SIZES 8-24: 'D' IS .063/1.60 FOR .010/0.25 STEP.
- TO AVOID INTERFERENCE BETWEEN RECEPTACLE AND PCB, HEADER MUST BE PLACED WITHIN .400/(10.16) MAX. FROM EDGE OF PCB, AS SHOWN IN LOCATION DETAIL.
- THIS PART CONFORMS TO CLASS B REQUIREMENTS OF PRODUCT SPECIFICATION PS-45499-002.

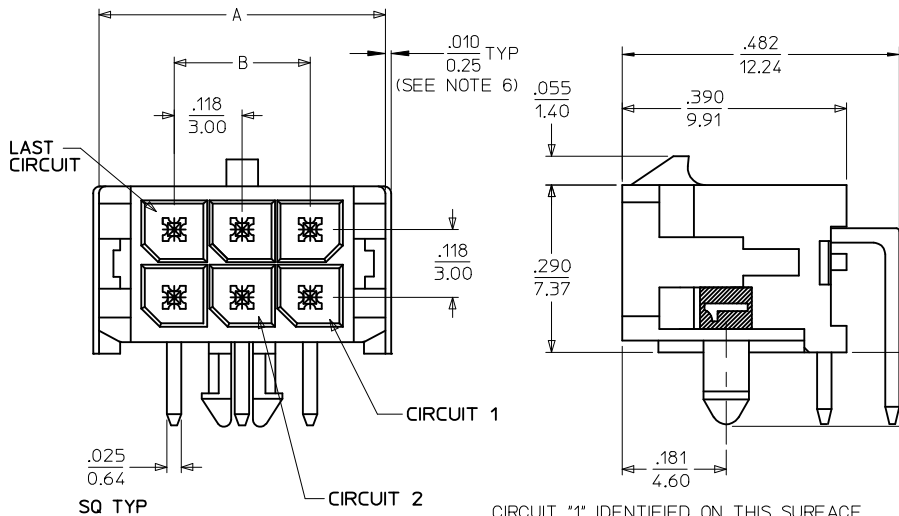
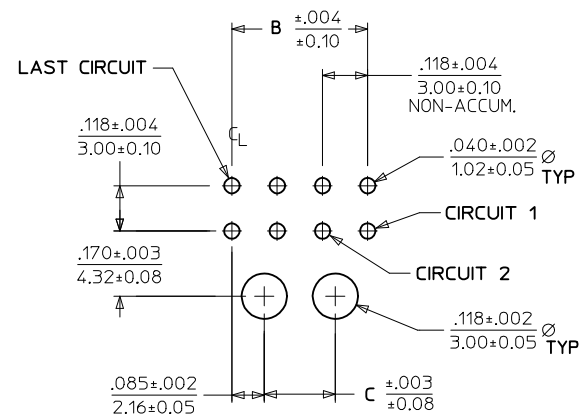
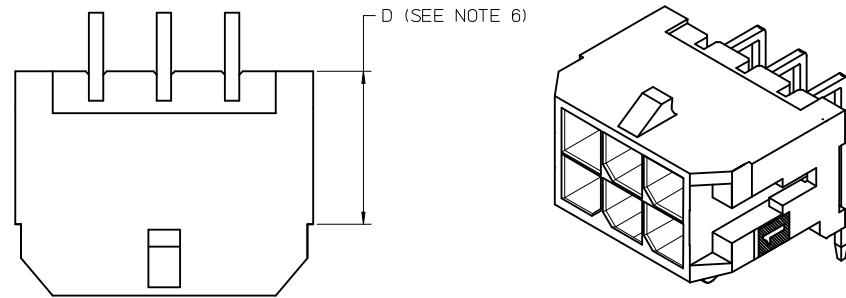
CIRCUIT \*1\* IDENTIFIED ON THIS SURFACE  
(APPROX. LOCATION SHOWN FOR REF.)

CKTS	FINISH A MATERIAL NO:	FINISH B MATERIAL NO:	FINISH C MATERIAL NO:	FINISH D MATERIAL NO:
02	43045-0200	43045-0201	43045-0202	43045-0310
04	43045-0400	43045-0401	43045-0402	43045-0510
06	43045-0600	43045-0601	43045-0602	43045-0710
08	43045-0800	43045-0801	43045-0802	43045-0910
10	43045-1000	43045-1001	43045-1002	43045-1110
12	43045-1200	43045-1201	43045-1202	43045-1310
14	43045-1400	43045-1401	43045-1402	43045-1510
16	43045-1600	43045-1601	43045-1602	43045-1710
18	43045-1800	43045-1801	43045-1802	43045-1910
20	43045-2000	43045-2001	43045-2002	43045-2110
22	43045-2200	43045-2201	43045-2202	43045-2310
24	43045-2400	43045-2401	43045-2402	43045-2510

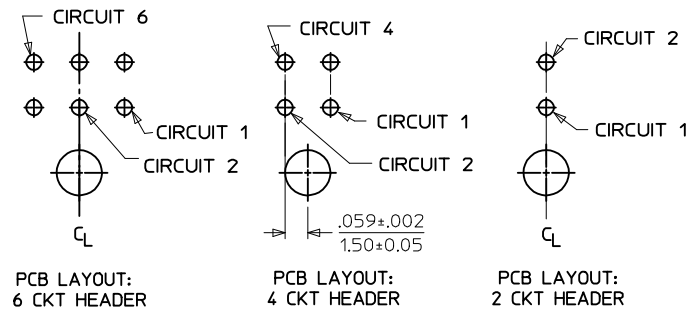


LOCATION DETAIL  
SEE NOTE #7

<b>FINISH A &amp; D</b> EC NO: UCP2016-4586 DRWIN:JDOFX 2015/12/10 CHKD:SSONSEK 2015/12/10 APPR:FSMITH 2016/08/23 (REV)	QUALITY SYMBOLS ∇=0 ∇=0 ∇=0	GENERAL TOLERANCES (UNLESS SPECIFIED)	DIMENSION STYLE <b>IN/MM</b>	SCALE ---	DESIGN UNITS <b>METRIC</b>	THIRD ANGLE PROJECTION		
		4 PLACES ± --- ± --- 3 PLACES ± --- ± .010 2 PLACES ± 0.25 ± .014 1 PLACE ± 0.36 ± --- 0 PLACE ± --- ± ---	DRAWN BY SAMIEC	DATE 2000/03/15	TITLE <b>MICRO-FIT (3.0) DUAL ROW RIGHT ANGLE THRU HOLE HEADER ASS'Y</b>	MATERIAL NO. <b>SEE CHART</b>	DOCUMENT NO. <b>SD-43045-001</b>	SHEET NO. <b>1 OF 1</b>
		ANGULAR ±1/2° DRAFT WHERE APPLICABLE MUST REMAIN WITHIN DIMENSIONS	THIS DRAWING CONTAINS INFORMATION THAT IS PROPRIETARY TO MOLEX INCORPORATED AND SHOULD NOT BE USED WITHOUT WRITTEN PERMISSION					



PCB LAYOUT: COMPONENT SIDE  
RECOMMEND PCB THICKNESS: .062/1.57

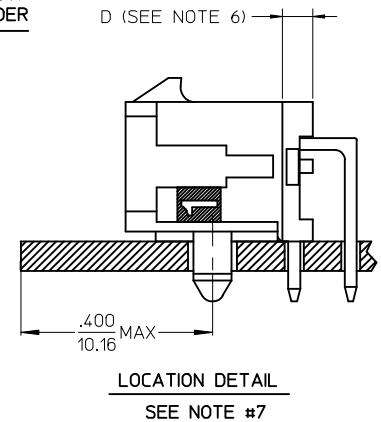


CKTS	A	B	C
02	.262 6.65	NA	NA
04	.380 9.65	.118 3.00	NA
06	.498 12.65	.236 6.00	NA
08	.616 15.65	.354 9.00	.185 4.70
10	.734 18.65	.472 12.00	.303 7.70
12	.852 21.65	.591 15.00	.421 10.70
14	.970 24.65	.709 18.00	.539 13.70
16	1.088 27.65	.827 21.00	.657 16.70
18	1.206 30.65	.945 24.00	.776 19.70
20	1.325 33.65	1.063 27.00	.894 22.70
22	1.443 36.65	1.181 30.00	1.012 25.70
24	1.561 39.65	1.299 33.00	1.130 28.70

NOTES:

- HOUSING MATERIAL: GLASS FILLED LIQUID CRYSTAL POLYMER, UL94V-0. COLOR: BLACK  
TERMINAL MATERIAL: BRASS ALLOY
- FINISH: A = .000060/(0.00152) MIN. REFLOWED MATTE TIN OVER  
.000050/(0.00127) MIN. NICKEL PLATE.  
(FINISH IS BRIGHT IN APPEARANCE. THICKNESS AS APPLIED PRIOR TO REFLOW)  
B = .00015/(0.00038) MIN. SELECT GOLD IN CONTACT AREA;  
.000100/(0.00254) MIN. SELECT MATTE TIN ON SOLDER TAILS,  
BOTH OVER .000050/(0.00127) MIN. NICKEL PLATE.  
C = .000030/(0.00076) MIN. SELECT GOLD IN CONTACT AREA;  
.000100/(0.00254) MIN. SELECT MATTE TIN ON SOLDER TAILS;  
BOTH OVER .000050/(0.00127) MIN. NICKEL PLATE.  
D = .000100/(0.00254) MIN. MATTE TIN OVER  
.000050/(0.00127) MIN. NICKEL OVERALL
- PRODUCT SPECIFICATION: PS-43045
- TRAY PACKAGED : SEE MOLEX DRAWING PK-70873-0313
- MATES WITH MICRO FIT (3.0) RECEPTACLE SERIES 43025
- CIRCUIT SIZES 2-6: 'D' IS .265/6.74 FOR .010/0.25 STEP.  
CIRCUIT SIZES 8-24: 'D' IS .063/1.60 FOR .010/0.25 STEP.
- TO AVOID INTERFERENCE BETWEEN RECEPTACLE AND PCB, HEADER MUST BE PLACED WITHIN .400/(10.16) MAX. FROM EDGE OF PCB, AS SHOWN IN LOCATION DETAIL.
- THIS PART CONFORMS TO CLASS B REQUIREMENTS OF PRODUCT SPECIFICATION PS-45499-002.

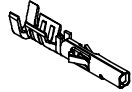
	FINISH A	FINISH B	FINISH C	FINISH D
CKTS	MATERIAL NO:	MATERIAL NO:	MATERIAL NO:	MATERIAL NO:
02	43045-0200	43045-0201	43045-0202	43045-0310
04	43045-0400	43045-0401	43045-0402	43045-0510
06	43045-0600	43045-0601	43045-0602	43045-0710
08	43045-0800	43045-0801	43045-0802	43045-0910
10	43045-1000	43045-1001	43045-1002	43045-1110
12	43045-1200	43045-1201	43045-1202	43045-1310
14	43045-1400	43045-1401	43045-1402	43045-1510
16	43045-1600	43045-1601	43045-1602	43045-1710
18	43045-1800	43045-1801	43045-1802	43045-1910
20	43045-2000	43045-2001	43045-2002	43045-2110
22	43045-2200	43045-2201	43045-2202	43045-2310
24	43045-2400	43045-2401	43045-2402	43045-2510



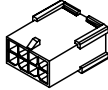
<b>FINISH A &amp; D</b> EC NO: UCP2016-4586 DRWIN:JDOFX 2015/12/10 CHKD:SSONSEK 2015/12/10 APPR:FSMITH 2016/08/23 (REV)	QUALITY SYMBOLS ∇=0 ∇=0 ∇=0	GENERAL TOLERANCES (UNLESS SPECIFIED) <table border="1"> <tr> <th></th> <th>mm</th> <th>INCH</th> </tr> <tr> <td>4 PLACES</td> <td>± .005</td> <td>± .0002</td> </tr> <tr> <td>3 PLACES</td> <td>± .010</td> <td>± .0004</td> </tr> <tr> <td>2 PLACES</td> <td>± 0.25</td> <td>± .010</td> </tr> <tr> <td>1 PLACE</td> <td>± 0.36</td> <td>± .014</td> </tr> <tr> <td>0 PLACE</td> <td>± .005</td> <td>± .0002</td> </tr> </table>		mm	INCH	4 PLACES	± .005	± .0002	3 PLACES	± .010	± .0004	2 PLACES	± 0.25	± .010	1 PLACE	± 0.36	± .014	0 PLACE	± .005	± .0002	DIMENSION STYLE <b>IN/MM</b>	SCALE ---	DESIGN UNITS <b>METRIC</b>	THIRD ANGLE PROJECTION
		mm	INCH																					
	4 PLACES	± .005	± .0002																					
	3 PLACES	± .010	± .0004																					
2 PLACES	± 0.25	± .010																						
1 PLACE	± 0.36	± .014																						
0 PLACE	± .005	± .0002																						
DRAFT WHERE APPLICABLE MUST REMAIN WITHIN DIMENSIONS		MATERIAL NO. <b>SEE CHART</b>	DRAWN BY SAMIEC	DATE 2000/03/15	TITLE <b>MICRO-FIT (3.0) DUAL ROW RIGHT ANGLE THRU HOLE HEADER ASS'Y</b>																			
ANGULAR ±1/2°		DOCUMENT NO. <b>SD-43045-001</b>	APPROVED BY FSMTTH	DATE 2016/08/23	<b>molex</b>																			
		SHEET NO. <b>1 OF 1</b>	THIS DRAWING CONTAINS INFORMATION THAT IS PROPRIETARY TO MOLEX INCORPORATED AND SHOULD NOT BE USED WITHOUT WRITTEN PERMISSION																					

MICRO-FIT(3.0)  
DUAL-ROW SERIES

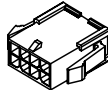
MICRO-FIT(3.0)  
IN-LINE SERIES



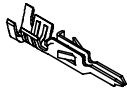
43030-xxxx  
FEMALE CRIMP TERMINAL



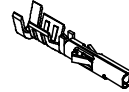
43020-xx01  
PLUG W/O MTG. EARS



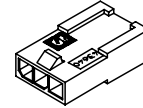
43020-xx00  
PLUG W/ MTG. EARS



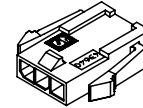
43031-xxxx  
MALE CRIMP TERMINAL



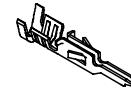
43030-xxxx  
FEMALE CRIMP TERMINAL



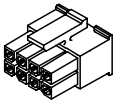
43640-xx01  
PLUG W/O MTG. EARS



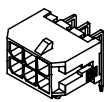
43640-xx00  
PLUG W/ MTG. EARS



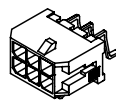
43031-xxxx  
MALE CRIMP TERMINAL



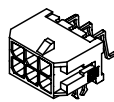
43025-xxxx  
RECEPTACLE



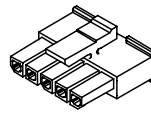
43045-xx00 THRU 43045-xx02  
RIGHT ANGLE THRU HOLE  
W/RETENTION PEG



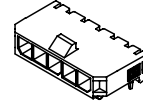
43045-xx03 THRU 43045-xx05  
RIGHT ANGLE SURFACE MOUNT  
W/RETENTION PEG



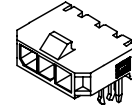
43045-xx06 THRU 43045-xx08  
RIGHT ANGLE SURFACE MOUNT  
W/RETENTION CLIP



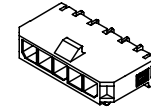
43645-xxxx  
RECEPTACLE



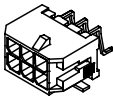
43650-xx00 THRU 43650-xx02  
RIGHT ANGLE THRU HOLE  
W/RETENTION PEG



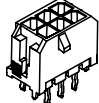
43650-xx03 THRU 43650-xx05  
RIGHT ANGLE THRU HOLE  
W/RETENTION CLIP



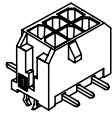
43650-xx06 THRU 43650-xx08  
RIGHT ANGLE SURFACE MOUNT  
W/RETENTION PEG



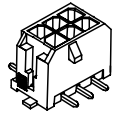
43045-xx09 THRU 43045-xx11  
RIGHT ANGLE SURFACE MOUNT  
W/FITTING NAIL



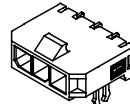
43045-xx12 THRU 43045-xx14  
VERTICAL O.T.R. THRU HOLE



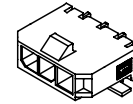
43045-xx15 THRU 43045-xx17  
VERTICAL SURFACE MOUNT  
W/RETENTION CLIP



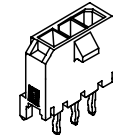
43045-xx18 THRU 43045-xx20  
VERTICAL SURFACE MOUNT  
W/FITTING NAIL



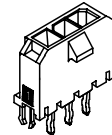
43650-xx09 THRU 43650-xx11  
RIGHT ANGLE SURFACE MOUNT  
W/RETENTION CLIP



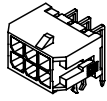
43650-xx12 THRU 43650-xx14  
RIGHT ANGLE SURFACE MOUNT  
W/FITTING NAIL



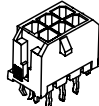
43650-xx15 THRU 43650-xx17  
VERTICAL O.T.R. THRU HOLE



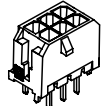
43650-xx18 THRU 43650-xx20  
VERTICAL O.T.R. THRU HOLE  
W/RETENTION CLIP



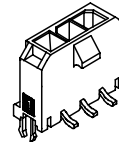
43045-xx21 THRU 43045-xx23  
RIGHT ANGLE THRU HOLE  
W/RETENTION CLIP



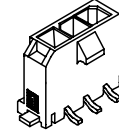
43045-xx24 THRU 43045-xx26  
VERTICAL O.T.R. THRU HOLE  
W/RETENTION CLIP



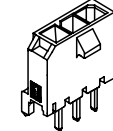
43045-xx27 THRU 43045-xx29  
VERTICAL STRAIGHT PIN THRU HOLE



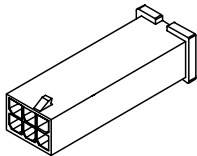
43650-xx21 THRU 43650-xx23  
VERTICAL SURFACE MOUNT  
W/RETENTION CLIP



43650-xx24 THRU 43650-xx26  
VERTICAL SURFACE MOUNT  
W/FITTING NAIL



43650-xx27 THRU 43650-xx29  
VERTICAL STRAIGHT PIN THRU HOLE

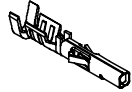


44242-0001 THRU 44242-0011  
4-24 CKT. TEST PLUG

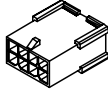
REVISED/REDRAWN EC NO. UCP2004-1223 DRWN: ICERNY 2004/03/12 CHKD: CHKCD 2004/03/31 APPR: FSMITH 2004/04/05	QUALITY SYMBOLS	GENERAL TOLERANCES (UNLESS SPECIFIED)		SCALE	DESIGN UNITS	THIRD ANGLE PROJECTION	REVISE ON CAD ONLY	
	▽ 0 ▽ 0	4 PLACES ± 0.15 3 PLACES ± 0.20 2 PLACES ± 0.25 1 PLACE ± 0.30	mm INCH	IN/MM	DIMENSION STYLE	TITLE		
		ANGULAR ±1/2°			DRAWN BY DATE GUZIK 1999/03/11	MICRO-FIT (3.0) CONNECTOR FAMILY (INDEX DRAWING)		
		DRAFT WHERE APPLICABLE			CHECKED BY DATE EDGLEY 1999/03/11		MOLEX MOLEX INCORPORATED	
	MUST REMAIN WITHIN DIMENSIONS			APPROVED BY DATE EDGLEY 1999/03/11	MATERIAL NO. (DOCUMENT NO.) SEE CHART SDIN-43045-0001	SHEET NO. 1 OF 1		
				THIS DRAWING CONTAINS INFORMATION THAT IS PROPRIETARY TO MOLEX INCORPORATED AND SHOULD NOT BE USED WITHOUT WRITTEN PERMISSION				

MICRO-FIT(3.0)  
DUAL-ROW SERIES

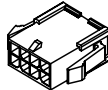
MICRO-FIT(3.0)  
IN-LINE SERIES



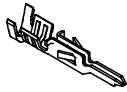
43030-xxxx  
FEMALE CRIMP TERMINAL



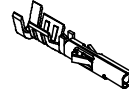
43020-xx01  
PLUG W/O MTG. EARS



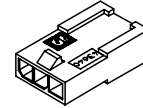
43020-xx00  
PLUG W/ MTG. EARS



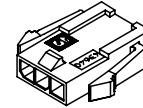
43031-xxxx  
MALE CRIMP TERMINAL



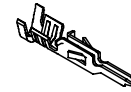
43030-xxxx  
FEMALE CRIMP TERMINAL



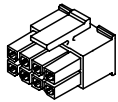
43640-xx01  
PLUG W/O MTG. EARS



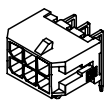
43640-xx00  
PLUG W/ MTG. EARS



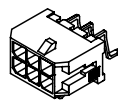
43031-xxxx  
MALE CRIMP TERMINAL



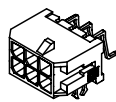
43025-xxxx  
RECEPTACLE



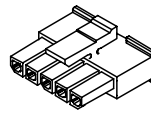
43045-xx00 THRU 43045-xx02  
RIGHT ANGLE THRU HOLE  
W/RETENTION PEG



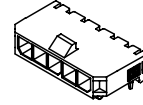
43045-xx03 THRU 43045-xx05  
RIGHT ANGLE SURFACE MOUNT  
W/RETENTION PEG



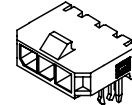
43045-xx06 THRU 43045-xx08  
RIGHT ANGLE SURFACE MOUNT  
W/RETENTION CLIP



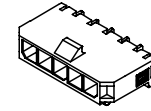
43645-xxxx  
RECEPTACLE



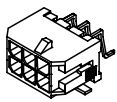
43650-xx00 THRU 43650-xx02  
RIGHT ANGLE THRU HOLE  
W/RETENTION PEG



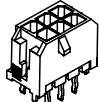
43650-xx03 THRU 43650-xx05  
RIGHT ANGLE THRU HOLE  
W/RETENTION CLIP



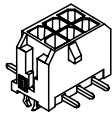
43650-xx06 THRU 43650-xx08  
RIGHT ANGLE SURFACE MOUNT  
W/RETENTION PEG



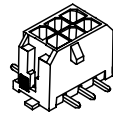
43045-xx09 THRU 43045-xx11  
RIGHT ANGLE SURFACE MOUNT  
W/FITTING NAIL



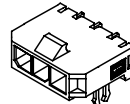
43045-xx12 THRU 43045-xx14  
VERTICAL O.T.R. THRU HOLE



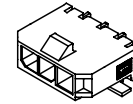
43045-xx15 THRU 43045-xx17  
VERTICAL SURFACE MOUNT  
W/RETENTION CLIP



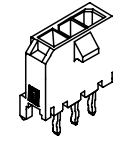
43045-xx18 THRU 43045-xx20  
VERTICAL SURFACE MOUNT  
W/FITTING NAIL



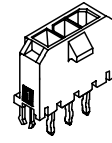
43650-xx09 THRU 43650-xx11  
RIGHT ANGLE SURFACE MOUNT  
W/RETENTION CLIP



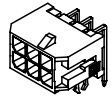
43650-xx12 THRU 43650-xx14  
RIGHT ANGLE SURFACE MOUNT  
W/FITTING NAIL



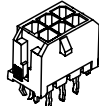
43650-xx15 THRU 43650-xx17  
VERTICAL O.T.R. THRU HOLE



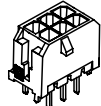
43650-xx18 THRU 43650-xx20  
VERTICAL O.T.R. THRU HOLE  
W/RETENTION CLIP



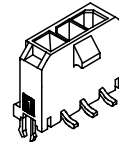
43045-xx21 THRU 43045-xx23  
RIGHT ANGLE THRU HOLE  
W/RETENTION CLIP



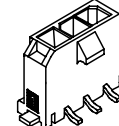
43045-xx24 THRU 43045-xx26  
VERTICAL O.T.R. THRU HOLE  
W/RETENTION CLIP



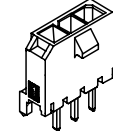
43045-xx27 THRU 43045-xx29  
VERTICAL STRAIGHT PIN THRU HOLE



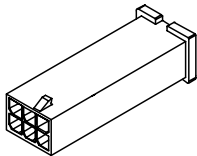
43650-xx21 THRU 43650-xx23  
VERTICAL SURFACE MOUNT  
W/RETENTION CLIP



43650-xx24 THRU 43650-xx26  
VERTICAL SURFACE MOUNT  
W/FITTING NAIL



43650-xx27 THRU 43650-xx29  
VERTICAL STRAIGHT PIN THRU HOLE



44242-0001 THRU 44242-0011  
4-24 CKT. TEST PLUG

REVISED/REDRAWN EC NO. UCP2004-1223 DRWN: ICERNY 2004/03/12 CHKD: CHKDC 2004/03/31 APPR: FSMITH 2004/04/05	QUALITY SYMBOLS	GENERAL TOLERANCES (UNLESS SPECIFIED)		SCALE	DESIGN UNITS	THIRD ANGLE PROJECTION	REVISE ON CAD ONLY	
	▽ 0 ▽ 0	4 PLACES ± 0.15 3 PLACES ± 0.20 2 PLACES ± 0.25 1 PLACE ± 0.30	mm INCH	IN/MM	DIMENSION STYLE	TITLE	MICRO-FIT (3.0) CONNECTOR FAMILY (INDEX DRAWING)	
	DRAFT WHERE APPLICABLE	ANGULAR ±1/2°	MUST REMAIN WITHIN DIMENSIONS		DRAWN BY DATE GUZIK 1999/03/11	CHECKED BY DATE EDGLEY 1999/03/11	MATERIAL NO. (DOCUMENT NO.) SEE CHART SDIN-43045-0001	SHEET NO. 1 OF 1
	THIS DRAWING CONTAINS INFORMATION THAT IS PROPRIETARY TO MOLEX INCORPORATED AND SHOULD NOT BE USED WITHOUT WRITTEN PERMISSION							