

Panel Frame

SKU:A125



Description

Panel Frame is a frame construction for fixing Core1, Core2 and Tough series M5Core. Offering two installation methods of screw and double-sided adhesive tape. For M5Tough installation, 3M waterproof double-sided adhesive tape can provide waterproof function. For the M5Core (Core1, Core2), four plastic pads are to be installed into four corners of the frame, to make the M5Core surface in parallel with PanelFrame. Customer can choose the method of cutting holes, with the help of attached card paper.

Include

- 1 x Panel Frame
- 1 x Plastic Pad part (4 pcs included)
- 2 x Die-cut 3M Waterproof Double-sided Adhesive Tape
- 1 x Card Paper with Dimension Indication
- 4 x M3 x 16 stainless steel hexagon screws
- 2 x M3 x 14 stainless steel hexagon screws

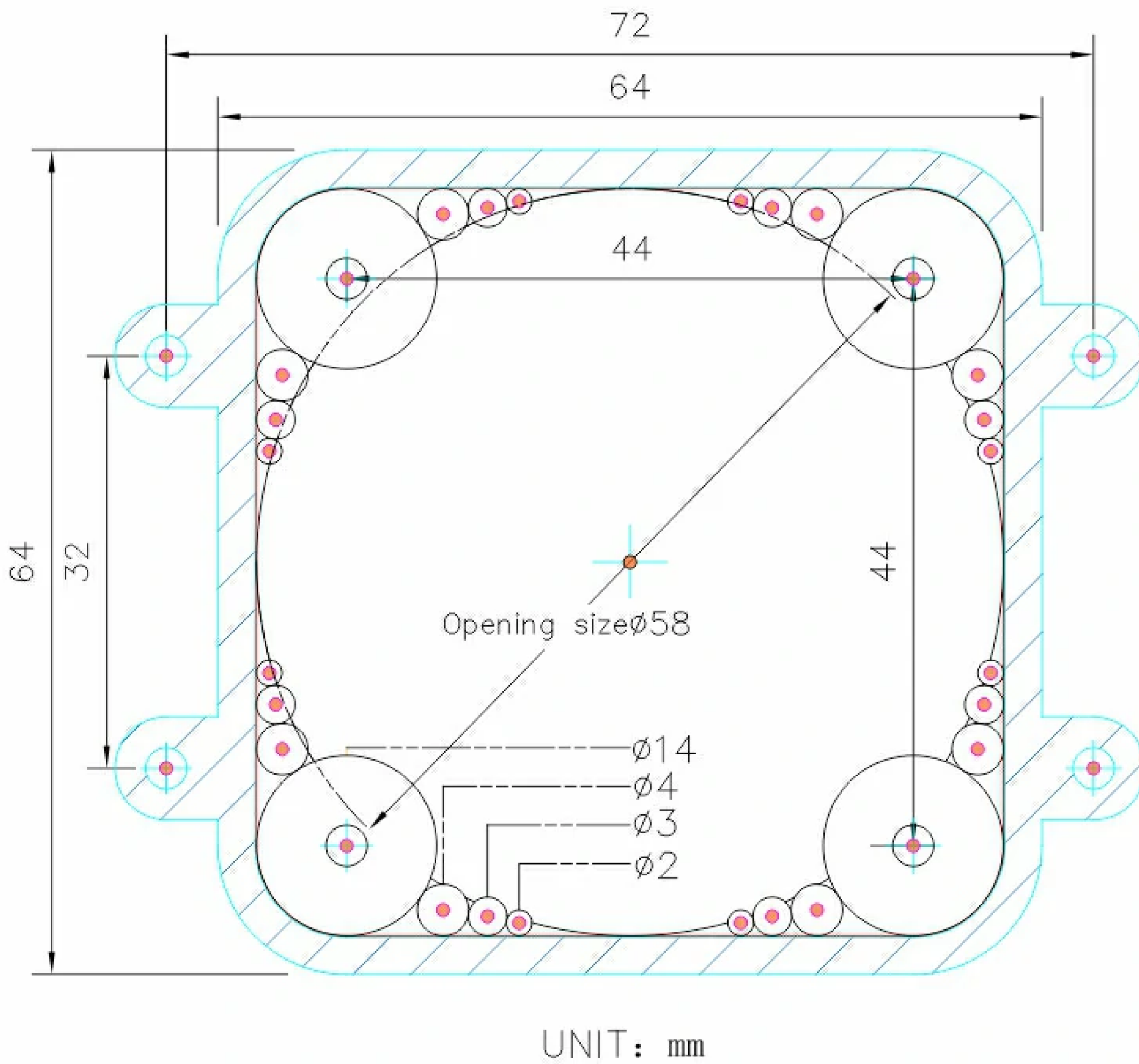
Specification

Spec	Parameter
Net Weight	8.96g

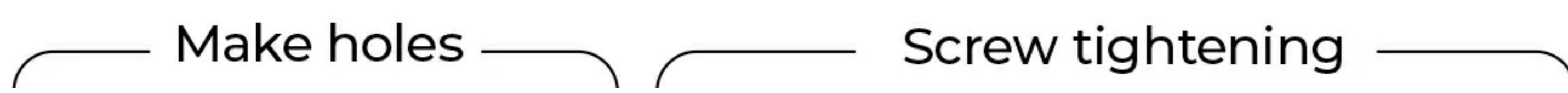
Spec Gross Weight	Parameter 24g
Product Size	72mm x 64mm x 18.4mm
Package Size	165mm x 118mm x 19mm

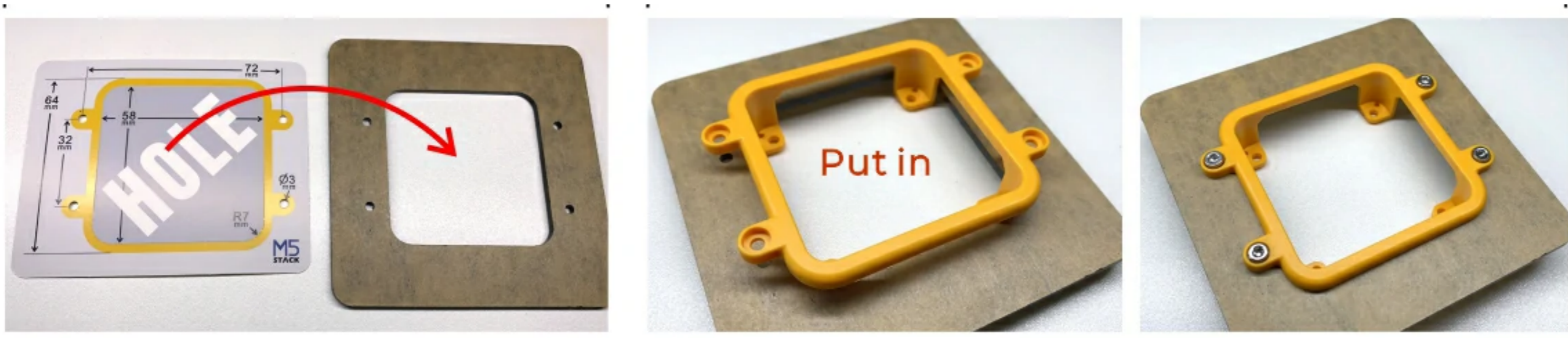


Dimensional drawings

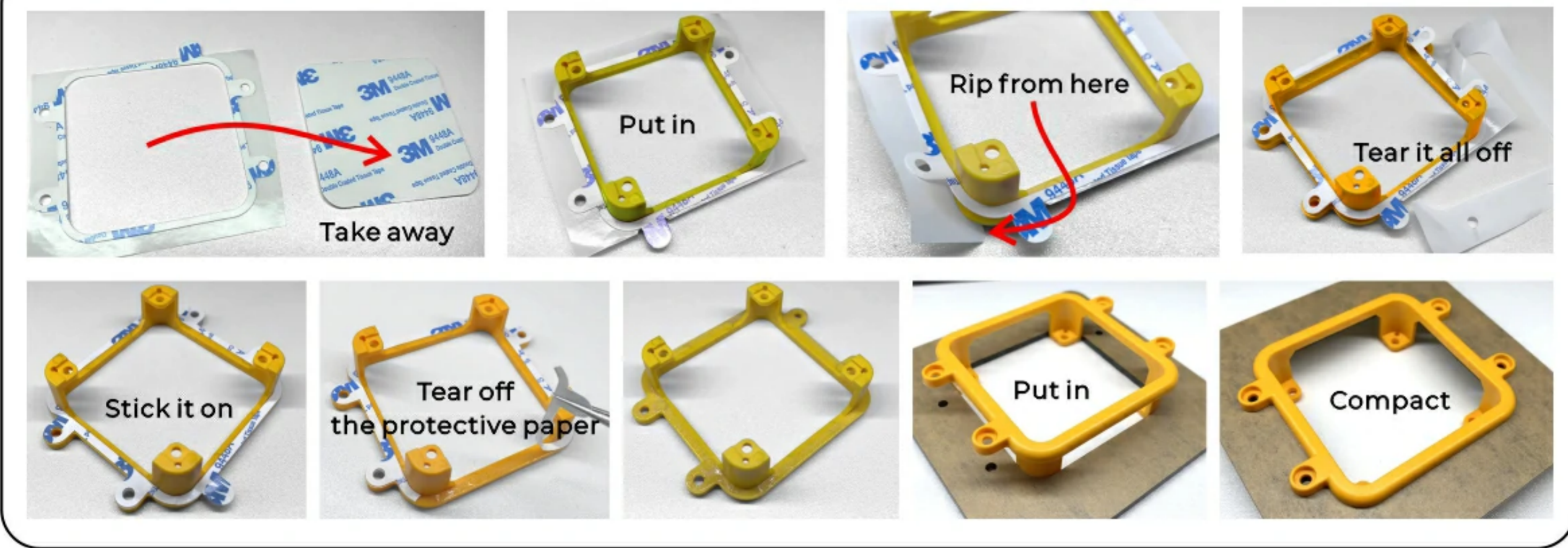


Instructions





Double-sided tape fastening



Tough / Core2



Core(Basic/Fire/Gray)

