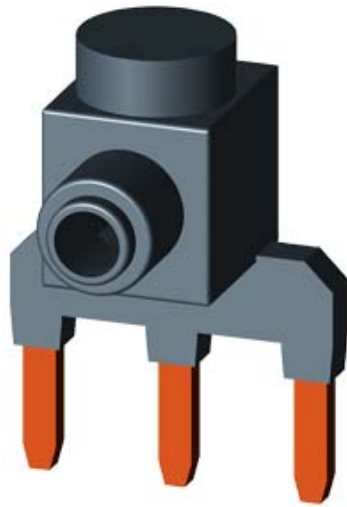


PARALLEL CONNECTION WITH TERMINAL, 3-POLE FOR 3RT101.








General technical data:




product brand name	SIRIUS
Product designation	Infeed terminal
Design of the product	Parallel switching connection for contactors S00
Size of contactor	S00

Installation/ mounting/ dimensions:

Mounting type	screw fixing
---------------	--------------

Certificates/ approvals:

General Product Approval	Declaration of Conformity	Test Certificates	Shipping Approval
 CSA	 UL	 EG-Konf.	Special Test Certificate  ABS  BUREAU VERITAS

Shipping Approval	other
 GL  PRS  RINA	other Confirmation Environmental Confirmations

Further information

Information- and Downloadcenter (Catalogs, Brochures,...)
<http://www.siemens.com/industrial-controls/catalogs>

Industry Mall (Online ordering system)

<http://www.siemens.com/industrymall>

Cax online generator

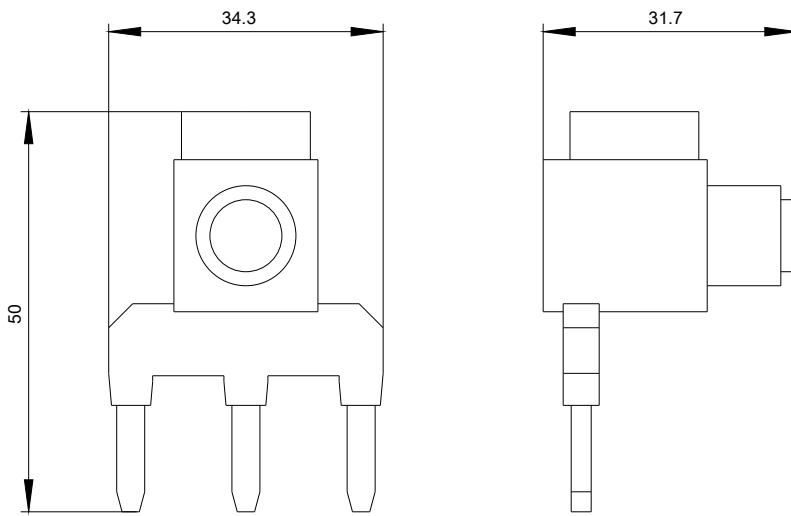
<http://support.automation.siemens.com/WW/CAXorder/default.aspx?lang=en&mlfb=3RT19164BB31>

Service&Support (Manuals, Certificates, Characteristics, FAQs,...)

<http://support.automation.siemens.com/WW/view/en/3RT19164BB31/all>

Image database (product images, 2D dimension drawings, 3D models, device circuit diagrams, EPLAN macros, ...)

<http://www.automation.siemens.com/bilddb/index.aspx?attID9=3RT19164BB31&lang=en>



last modified:

09.03.2015