

CPGW indexable insert ULTRAPOWER PKD positive

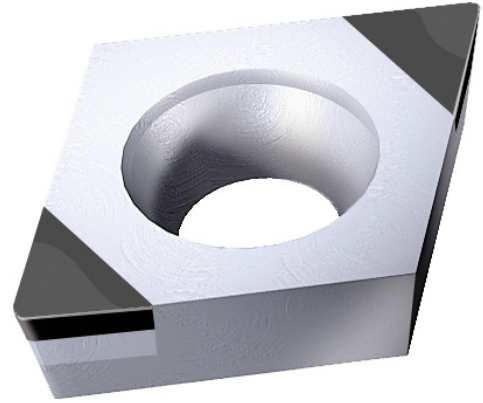
ATORN[®]

Application

For longitudinal turning and facing in the material groups of non-ferrous metals, special alloys, ceramics and hard metals.

Version

- Lasered ULTRAPOWER PFD indexable insert



Art. no.	17871 490
Shape of indexable insert ISO	C
Clearance angle of indexable insert ISO	P
Tolerance class of indexable insert ISO	G
Indexable insert type ISO	W
Size of indexable insert ISO	05
Thickness of indexable insert ISO	T1
Corner radius of indexable insert ISO	04
ISO name	CPGW 05T104
Cutting material	Ultra PCD
Type of cutting material	APC,neutral
ISO-Code Rotating	CPGW 05T104
Design of the chamfer	A (sharp)

EAN-Code

4050293568202