

## MASI68 I/O MODUL

2 digital inputs and 2 digital outputs

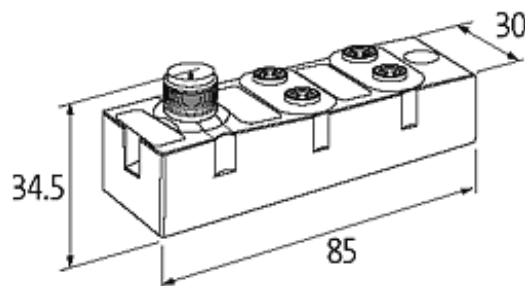
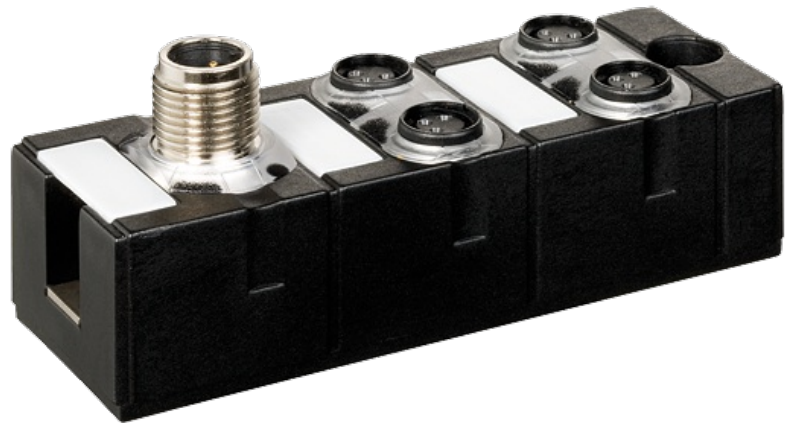
Compact module

DI4 - 0.2 A DO3 - 0.5 A (C) 7×M8 (AB)

For connection cables please see chapter "Connection Technology" All housings are fully potted

### [Link to Product](#)

#### Illustration



Product may differ from Image

#### Approvals



#### Input

Type	for 3-wire sensors or mechanical switches, PNP, (EN 61131-2)
Sensor supply US	max. 200 mA from AS-Interface (short-circuit and overload protected)

#### Connections

Fieldbus	M12, A-coded
----------	--------------

I/O ports	M8 (3-pole)
-----------	-------------

#### Technical Data

Bus voltage (AS-Interface)	26.5...31.6 V DC
----------------------------	------------------

Addressing	via master or M12 connection and programming device
------------	---

Profile (IO/ID/ID2 code)	S-7.A.0
--------------------------	---------

Address range	1...62 (1...31 A or B)
---------------	------------------------

Total current	max. 250 mA
---------------	-------------

#### General data

Protection	IP68
------------	------

Mounting method	screw fixing
-----------------	--------------

Temperature range	-20...+60 °C (storage temperature -20...+70 °C)
-------------------	---

#### Output

Supply voltage	24 V DC external (18...30.2 V DC) EN 61131-2
----------------	--

Switching current per output	max. 0.5 A (short-circuit and overload protected)
------------------------------	---

Total current	max. 1.5 A
---------------	------------

#### Diagnostic

Communication status	via LED
----------------------	---------

Diagnostic via LED	per module
--------------------	------------

Monitoring - no voltage	yes
-------------------------	-----

#### Commercial data

country of origin	DE
-------------------	----

customs tariff number	85176200
-----------------------	----------

minimum order quantity	1
------------------------	---