

**FLANGEABLE DUAL PILOT ASSISTED
OVERCENTRE VALVES SERIES "NA"**

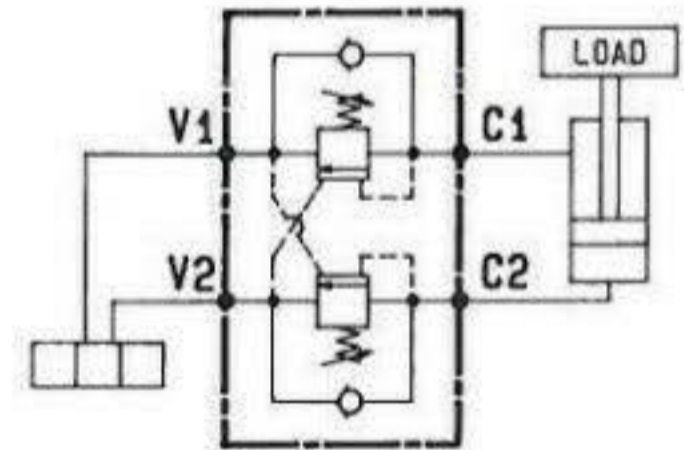
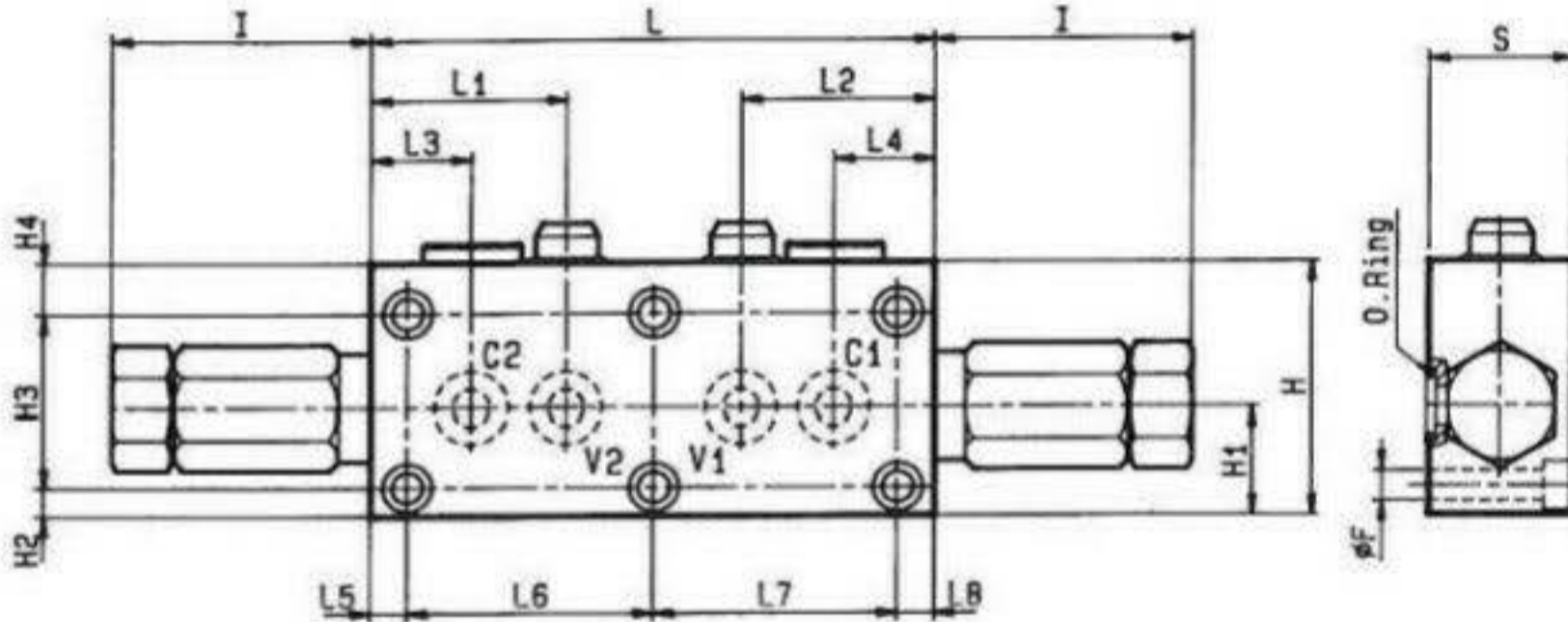
VBS0-DE-NA-FC

05.42.27 - X - Y - Z

DENOMINAZIONE VALVOLA
VALVE DENOMINATION

CODICE D'ORDINAZIONE
ORDERING CODE

The "NA" series has a cartridge style relief section, a check valve with steel seat and allows a choice of different interchangeable pilot ratios, all with self-cleaning device. Excellent control in a wide flow/pressure range. The flange mounting ensures best efficiency, compact installation and cost saving. Filtration level: 50 micron or better. Leak proof seat design.

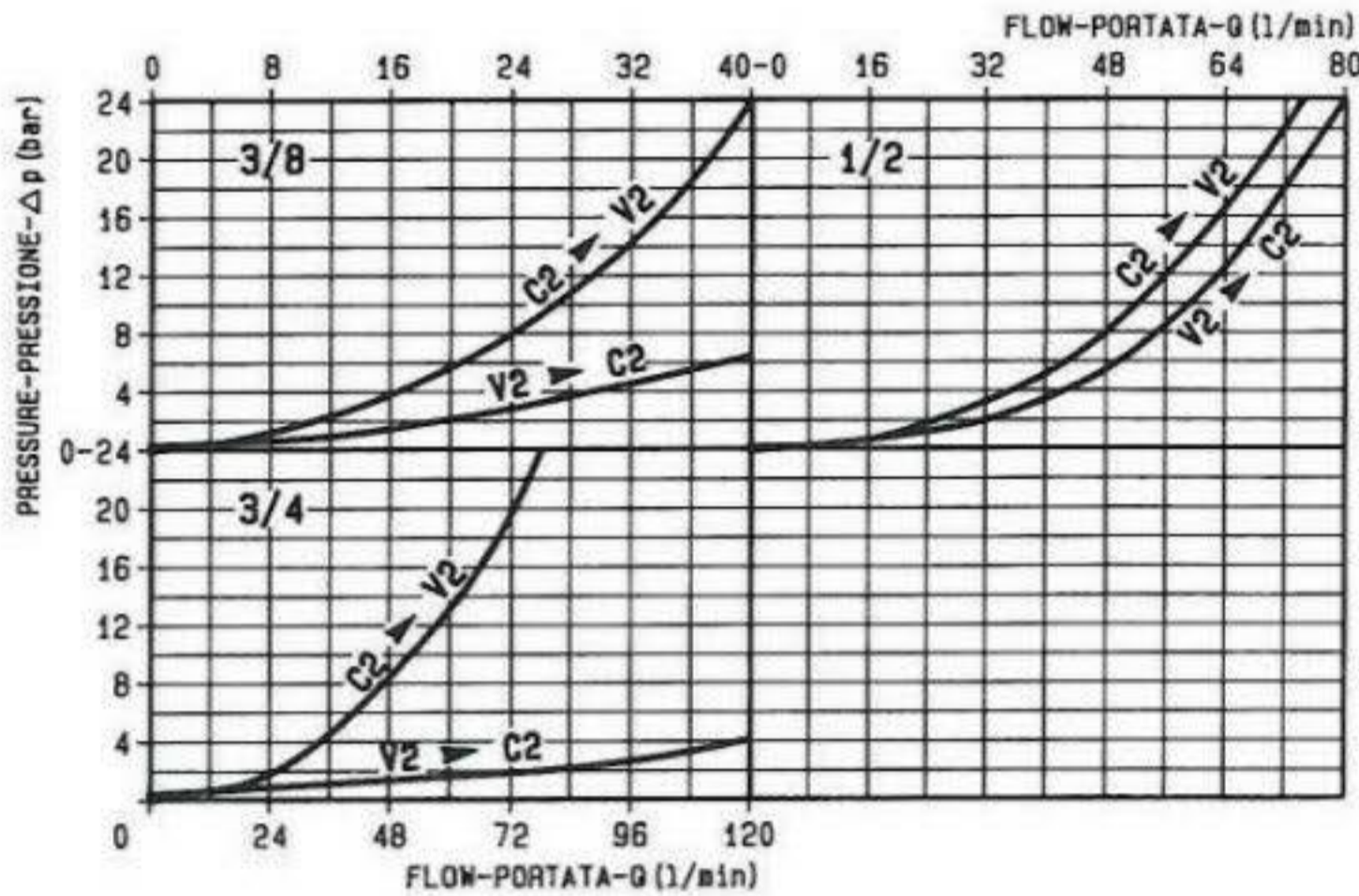


Cappellotto per piombatura / Sealing cap
Codice / Ordering code: N.03.05.01.001

Pressione di lavoro max $\frac{350 \text{ bar}}{1,3} = 270 \text{ bar}$ / Portata max vedi diagramma

Max working pressure $\frac{350 \text{ bar}}{1,3} = 270 \text{ bar}$ / Flow see performance graph

39	10	80	80	10	29	29	62	62	180	69	30	50	10	35	90	10,5	24,99x3,53	∅ 14	2,50
39	10	67,5	67,5	10	27,5	27,5	53,5	53,5	155	71,5	14	48	8	32	70	8,5	15,34x2,62	∅ 10	2,10
34	9	63,5	63,5	9	25,5	25,5	50	50	145	61,5	17	40	8	27	65	8,5	15,34x2,62	∅ 8	1,40
S	L8	L7	L6	L5	L4	L3	L2	L1	L	I	H4	H3	H2	H1	H	F	O.R. size	Y	peso kg weight kg



X	RAPPORTO DI PILOTAGGIO PILOT RATIO
03	∅10 - 7,55 : 1 ∅14 - 7,55 : 1
10	∅ 8 - 3,55 : 1 ∅10 - 2,95 : 1 ∅14 - 2,95 : 1

Z	MOLLE - SPRINGS				
	Campo taratura min-max bar Adj.press. range bar	Incremento pressione bar/giro vite Pressure increase bar/turn	Taratura standard bar (0=5 1/1') Std.setting bar (made at 5 1/1')	Codice ordinazione Ordering code	Colore Colour
3/8"	20	60-210	60	200	verde green
	35	100-350	100	350	giallo yellow
1/2"	20	60-210	68	200	verde green
3/4"	35	100-350	105	350	giallo yellow

Y	ATTACCHI / PORT SIZE	
	V1 - V2 - C1 - C2	
02	∅ 8 (3/8")	
03	∅ 10 (1/2")	
04	∅ 14 (3/4")	