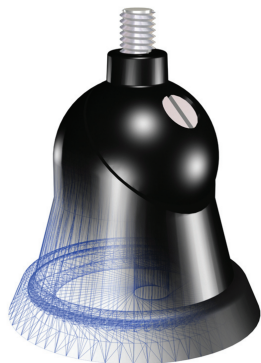


Base 128

Mounting instructions



1. Drill a 19 mm Ø mounting hole.

2. Clean thoroughly about 10 mm around the hole on the underside of the plate to obtain good grounding. Then treat the surface with an anti-corrosive agent of low viscosity, like tectyl.

3. Mount the gasket (4) and fasten the cable (6) to the insulator (3) with an appropriate tool.

4. Put the bracket (5) in the mounting hole. Pass the cable (6) through the hole. Be careful that the insulator and the bracket are correctly connected to each other (see figure).

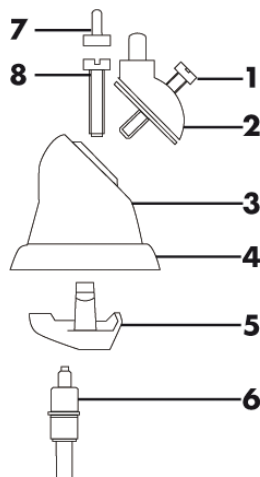
5. Insert the insulator in the horn-bracket, but not harder than the base can be turned. Fit the ball-joint (2) (with the rod mounted) to the insulator, correct the position* of the rod by mutual turning of base and ball-joint.

6. Tighten screw (8) finally, moment=20–25 kpcm**.

7. Mount the rubber cap (7). Fasten the ball-joint with the screw (1), moment=20–25 kpcm**.

*The position of the rod must be vertical, except for FM (broadcasting) antenna, when it should lean about 45°.

**Moment 20–25 kpcm means hard tightening with a normal screwdriver.



SMARTEQ™
WIRELESS TELECOM

SMARTEQ Wireless AB
Enebyberg, Sweden
info@smarteq.se
www.smarteq.com