

EAO – Your Expert Partner for Human Machine Interfaces

61-9922.0 - Protective cover

61-9922.0 - Protective cover



Attention: The preview is based on a sample product. This can differ from your current configuration.

Mounting

Mounting cut-out
Design 21 mm x 27 mm
flush

Other Attributes

Weight 0,006 kg
Material Plastic
Colour

IP-Rating

Front protection IP65

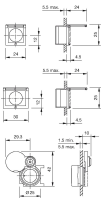
Optics

Optics transparent

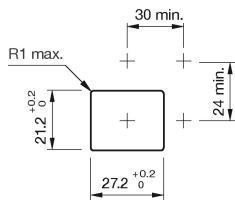
EAO – Your Expert Partner for Human Machine Interfaces

61-9922.0 - Protective cover

Dimensions



Mounting cut-outs



Additional information

hinged, with means for sealing

Pitch of the front plate mounting holes must agree with the printed circuit board holes $\varnothing 3.5$

Please note that bigger minimum distances are necessary