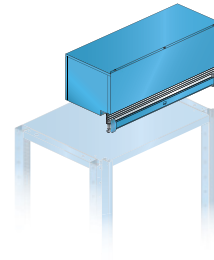


Roller shutter

Execution:

- Roller shutter including top shelf: pre-assembled roller shutter housing. Roller shutters are guided in vertical profiles, pre-assembled on support frame. With recess for cylinder cam lock. For initial assembly, including upper top shelf, pre-drilled, for screwing onto the roller shutter housing. Version: Roller shutter housings and guide profiles made of sheet steel. Colour: according to colour chart. Roller shutters made of plastic slats. Colour: Light grey, RAL 7035. Caution: The structure increases the rack height by 323 mm.



| | |
|---------------------------------|---------------------|
| Art. no. | 50308 572 |
| Brand | LISTA |
| Manufacturer Part Number | 73.236.010 |
| Colour | Light blue RAL 5012 |
| Width | 890 mm |
| Depth | 1260 mm |
| Gross Weight | 71.000 kg |
| Product Group | 5AN |