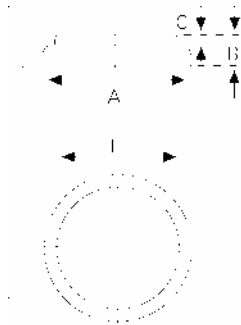


**Data Sheet**



**Type Number** ..... 6032  
**Designation IEC** ..... CR 2032  
**System** ..... Li-Manganese dioxide / Organic Electrolyte

**UL Recognition:**..... MH 13654 (N)  
**Nominal Voltage** ..... 3 V  
**Typical Capacity C** ..... 230 mAh  
 Load 5.6 kOhm, at 20°C down to 2 V

**Weight (approx.)** ..... 3 g  
**Volume** ..... 0,95 ccm  
**Coding**..... Date of Manufacturing Month/Year

**Temperature Ranges** min max.  
 Storage ..... -55°C 70°C  
 Discharge ..... -20°C 70°C

**Dimensions** min max.  
 Diameter (A) ..... 19,7 20,0  
 Height (B) ..... 2,9 3,2  
 Shoulder Diameter[E]..... 18,3  
 Shoulder Height [C]..... 0,7

**Segment** ..... Electronic

**Main Applications** ..... Watch  
 Photo  
 Electronic

**Typical Capacities (at 20°C)**

Discharge Type	Load	End Voltage:	2.0 V
Continuous 24h/d, 7d/w Current [µA]:	5600 Ω	Time: Capacity [mAh]: Energy [mWh]:	460 h 230 645

All Data contained herein is for single cells

For battery applications, performance data may vary from single cell data, depending on specific battery configuration

VARTA Microbattery GmbH, Daimlerstr. 1, D-73479 Ellwangen/Jagst  
 Tel.: (+49) 7961/921-0, Telefax: (+49) 7961/921-553

Subject to change without prior notice!  
 Date of issue: 2004-12-16