

# GN 509.1 | Ball transfer units

Steel



- 1
- 2
- 3
- 4
- 5
- 6
- 7
- 8
- 9
- 10
- 11
- 12
- 13
- 14
- 15
- 16
- 17
- 18

## MATERIAL

Turned and zinc-plated steel.

## RETAINING COMPONENTS

Zinc-plated steel.

## RETAINING RING

Felt seal (only for dimensions 22 and 30).

## STANDARD EXECUTIONS

- **GN 509.1-SBL**: steel balls.
- **GN 509.1-SNI**: stainless steel balls.

## FEATURES AND APPLICATIONS

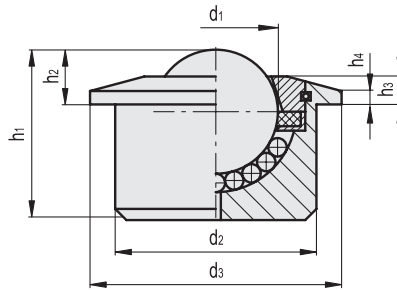
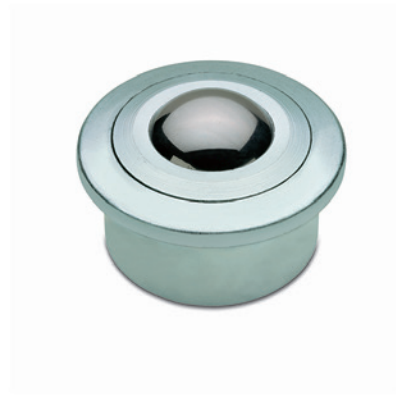
GN 509.1 ball transfer units are particularly suitable on conveyor tracks. They make linear or rotary movements easier even with heavy loads (see Technical Data on page 975).

## ACCESSORIES ON REQUEST

Spring rings GN 509.3 (see page 976) stainless steel spring rings allow an easy and quick assembly and removal of ball transfer units GN 509.1.

## SPECIAL EXECUTIONS ON REQUEST

Stainless steel body and balls (GN 509.1-SNI).



## GN 509.1-SBL

Code	Description	d1	d2 ±0.08	d3	h1 ±0.3	h2 ±0.3	h3 ±0.3	h4	Max. load carrying capacity [N]	⚖️
GN.23031	GN 509.1-12-SBL	12.7	22	27	17	8	4	3.2	200	35
GN.23036	GN 509.1-15-SBL	15.8	24	30	20	8.1	3.5	1	500	55
GN.23041	GN 509.1-22-SBL	22.2	36	45	30.5	9.8	5	2.4	1300	130
GN.23046	GN 509.1-30-SBL	30.1	45	55	36.8	13.8	7	4.5	2500	360
GN.23051	GN 509.1-45-SBL	44.4	62	75	53.5	19	9.5	5.5	6000	980
GN.23056	GN 509.1-60-SBL	60	100	117	77.5	30	15	10	13000	3700

## GN 509.1-SNI



Code	Description	d1	d2 ±0.08	d3	h1 ±0.3	h2 ±0.3	h3 ±0.3	h4	Max. load carrying capacity [N]	⚖️
GN.23032	GN 509.1-12-SNI	12.7	22	27	17	8	4	3.2	150	35
GN.23037	GN 509.1-15-SNI	15.8	24	30	20	8.1	3.5	1	400	55
GN.23042	GN 509.1-22-SNI	22.2	36	45	30.5	9.8	5	2.4	1000	130
GN.23047	GN 509.1-30-SNI	30.1	45	55	36.8	13.8	7	4.5	2000	360
GN.23052	GN 509.1-45-SNI	44.4	62	75	53.5	19	9.5	5.5	4500	980
GN.23057	GN 509.1-60-SNI	60	100	117	77.5	30	15	10	10000	3700

Machine elements