

BASE FLANGE

Black-oxide steel.

PLUNGER

Ground and black-oxide steel with hardened end.

KNOB

High-resilience polyamide based (PA) technopolymer, black colour, matte finish.

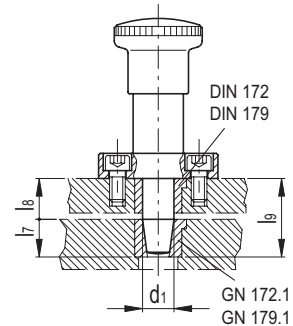
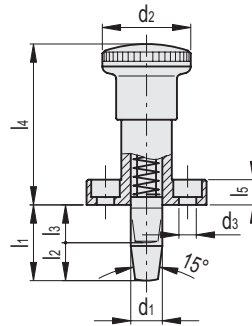
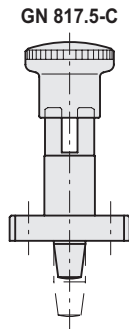
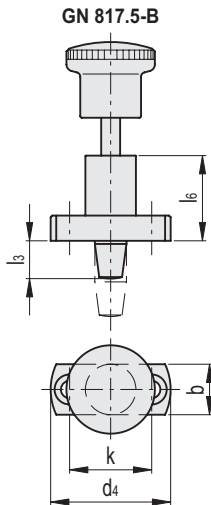
STANDARD EXECUTIONS

- **GN 817.5-B:** without rest position.
- **GN 817.5-C:** with rest position.

FEATURES AND APPLICATIONS

GN 817.5 indexing plungers are particularly suitable for applications where a very precise positioning is necessary. For this purpose, they are generally used in combination with guide bushings DIN 172 (see page 900) or DIN 179 (see page 902), with a cylindrical hole or, for a more precise positioning, in the absence of clearance, the guide bushings with conical hole GN 172.1 (see page 904) or GN 179.1 (see page 905).

GN 817.5 indexing plungers provide, among the main features, the possibility of having two different strokes (l1) for some diameters (d1) of the plunger, compact knobs, GN 817.5-C retracted position mechanisms inside the knob.



GN 817.5-B

Code	Description	d1 h6	d2	d3	d4	b	k	l1	l2	l3	l4	l5	l6	l7	l8	l9	[N]*	[N]#	⚖
GN.35451	GN 817.5-6-18-B	6	23	4.3	34	13	23	18	9	9	45	6	25	7	9+10	17.5	6	25	43
GN.35456	GN 817.5-6-24-B	6	23	4.3	34	13	23	24	9	15	45	6	25	7	15+16	23.5	6	25	48
GN.35461	GN 817.5-8-20-B	8	28	5.3	38	16	26	20	10.6	9.4	51	8	27	9	9.4+10	19.5	8.5	28	75
GN.35466	GN 817.5-8-26-B	8	28	5.3	38	16	26	26	10.6	15.4	51	8	27	9	15.4+16	25.5	8.5	28	80
GN.35471	GN 817.5-10-24-B	10	28	5.3	38	16	26	24	12.6	11.4	51	8	27	11	11.4+12	23.5	11.5	40	76
GN.35476	GN 817.5-10-32-B	10	28	5.3	38	16	26	32	12.6	19.4	51	8	27	11	19.4+20	31.5	11.5	40	80

GN 817.5-C

Code	Description	d1 h6	d2	d3	d4	b	k	l1	l2	l3	l4	l5	l6	l7	l8	l9	[N]*	[N]#	⚖
GN.35452	GN 817.5-6-18-C	6	23	4.3	34	13	23	18	9	9	45	6	25	7	9+10	17.5	6	25	46
GN.35457	GN 817.5-6-24-C	6	23	4.3	34	13	23	24	9	15	45	6	25	7	15+16	23.5	6	25	50
GN.35462	GN 817.5-8-20-C	8	28	5.3	38	16	26	20	10.6	9.4	51	8	27	9	9.4+10	19.5	8.5	28	79
GN.35467	GN 817.5-8-26-C	8	28	5.3	38	16	26	26	10.6	15.4	51	8	27	9	15.4+16	25.5	8.5	28	100
GN.35472	GN 817.5-10-24-C	10	28	5.3	38	16	26	24	12.6	11.4	51	8	27	11	11.4+12	23.5	11.5	40	83
GN.35477	GN 817.5-10-32-C	10	28	5.3	38	16	26	32	12.6	19.4	51	8	27	11	19.4+20	31.5	11.5	40	87

* Spring preload

Spring maximum load



Indexing and positioning elements