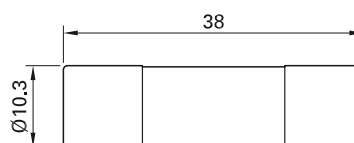


HBC type fuses GA-SV FLU-11 DMI...

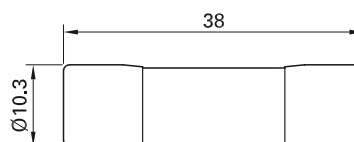
Can safely break extremely high short-circuit currents. The very low internal resistance permits the measurement of resistance and

current. Types FLU-11 and DMI-...A with UL approval.

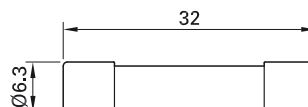
G1A-SV



FLU-11



DMI-0,5A



Order No.	Type	Fuse rating	Dimensions	Breaking capacity	
51.0011	G1A-SV	1 A	10 x 38 mm	100 kA (AC 500 V)	
51.0012	G2A-SV	2 A	10 x 38 mm	100 kA (AC 500 V)	
51.0013	G4A-SV	4 A	10 x 38 mm	100 kA (AC 500 V)	
51.0014	G6A-SV	6 A	10 x 38 mm	100 kA (AC 500 V)	
51.0016	G10A-SV	10 A	10 x 38 mm	100 kA (AC 500 V)	
51.0018	G16A-SV	16 A	10 x 38 mm	100 kA (AC 500 V)	
51.0019	G20A-SV	20 A	10 x 38 mm	100 kA (AC 500 V)	
69.0011	FLU-11	11 A	10 x 38 mm	20 kA (AC 1000 V, DC 1000 V)	
69.0012	DMI-0,5A	0.5 A	6.3 x 32 mm	30 kA (AC 1000 V, DC 1000 V)	
69.0013	DMI-1,6A	1.6 A	6.3 x 32 mm	30 kA (AC 1000 V, DC 1000 V)	