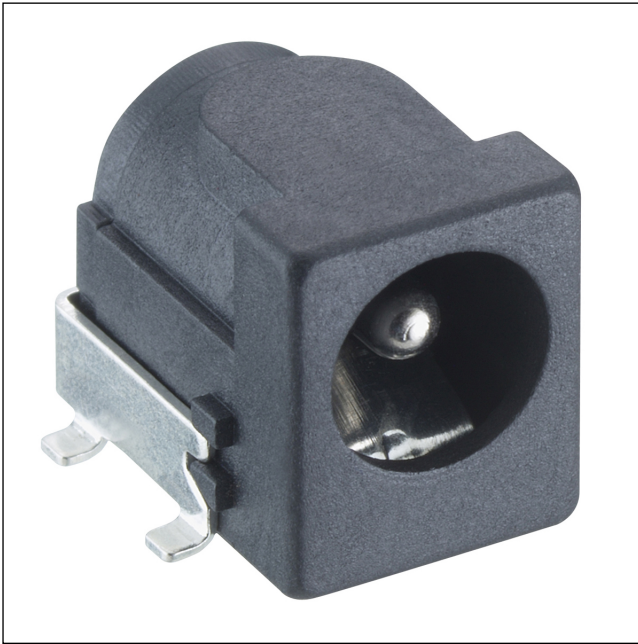


16

1613 33

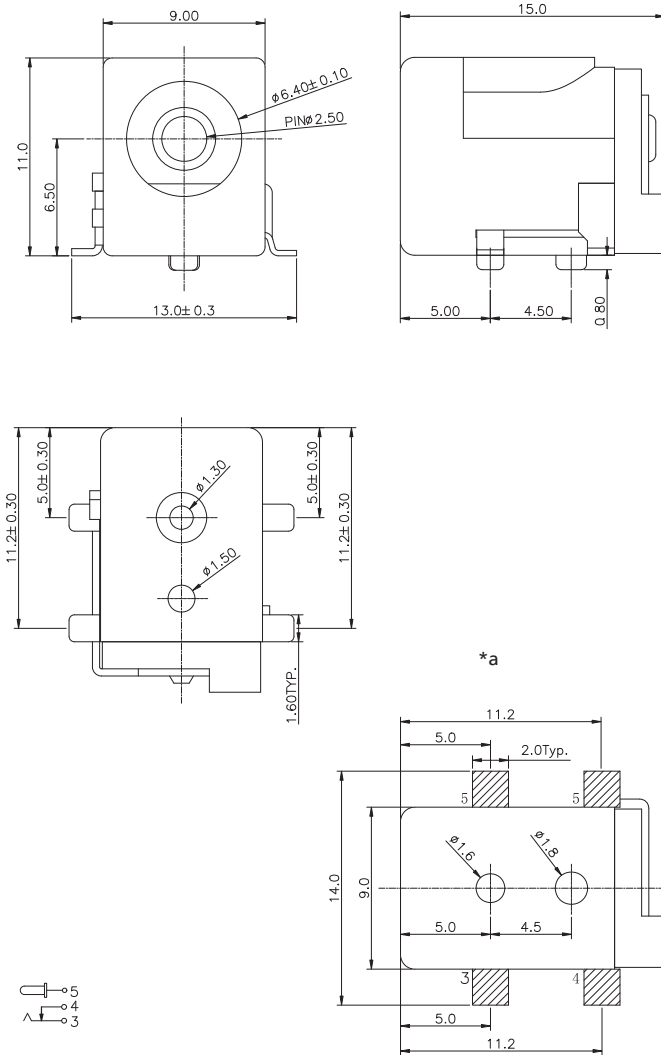
Power supply connectors



Power supply chassis socket, angular version, with break contact, for printed circuit boards, surface mounting technology (SMT)

16

1613 33



#### Environmental conditions

Temperature range -25 °C/+85 °C

#### Materials

Insulating body PA, V-0 according to UL94  
Contact CuZn/CuSn, silver/nickel-plated

#### Mechanical data

Diameter opening 6.4 mm  
Diameter center pin 2.5 mm  
Mating cycles 5000  
Insertion force 3–30 N  
Withdrawal force 3–30 N

#### Electrical data (at T<sub>amb</sub> 20 °C)

Contact resistance ≤ 30 mΩ  
Rated current 3 A  
Rated voltage 24 V  
Rated impulse voltage 500 V  
Insulation resistance ≥ 100 MΩ

#### Associated products

Counterparts  
 ☞ 1633 04      ☞ 1634 02      ☞ NES/J 25  
 ☞ NES/J 250      ☞ XNES/J 250

16

1613 33

Designation	Pole Number	PU (Pieces)	MDQ (Pieces)
1613 33 VP3	2	250	500

**Packaging:**

on reel (1613 33 VP3)