

solid carbide metal circular saw blade, finely toothed, shape A
for universal use up to 1300 N/mm² in thin-walled workpieces and small cutting depths on CNC machines



Application

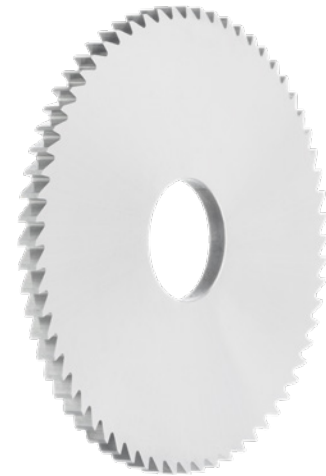
For making saw cuts in thin-walled workpieces and shallow cutting depths in the material groups of steel, stainless steel, cast iron and non-ferrous metals.

Version

- precision-ground metal circular saw blade with tooth shape A, fine-toothed, hollow ground on side

Advantage

- innovative cutting geometry for very high dimensional accuracy, process reliability and chip removal
- high-quality cutting material for very high service life requirements
- universal use in numerous applications



Application	Steel (N/mm ²)			Stainless steel		Alu		Brass		Bronze		Plas-tics	Graphite G(C)FK	GG(G) GjMW	Titan-alloy	Nickel-alloy	Super-alloy	Hard mat.	
	<700	<1000	<1300	marten.	austen.	short	long	short	long	short	long							<55 HRC	<65 HRC
	135	95	45	50	60			350	350	250				120	50	50	40		

Art. No.	14020 272
Tooth shape	A
Cutting material	VHM
Thickness of cutting edge	1.4 mm
Tolerance of cutting edge diameter	j15
Tolerance of cutting edge thickness	j11
Tolerance of hole diameter	H6
Cutting edge diameter	100 mm
Bore diameter	22 mm
Number of teeth	100 PCS
DIN	1837
Form	A

EAN-Code

4050293443103