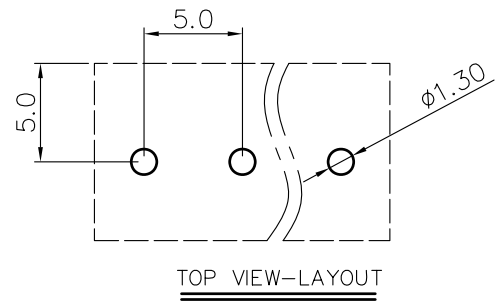
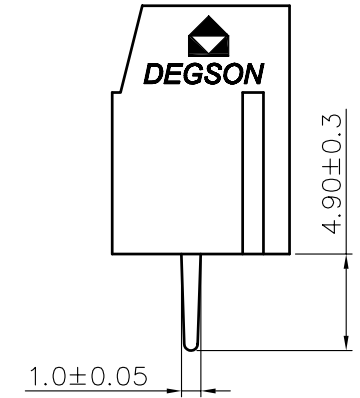
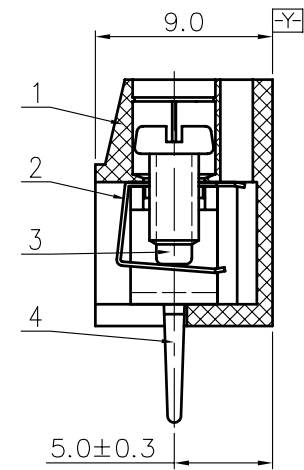
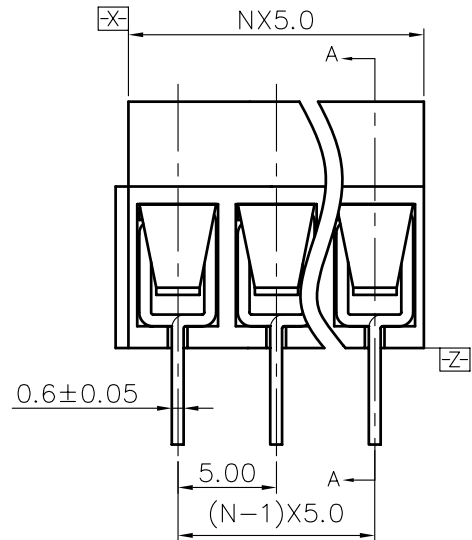
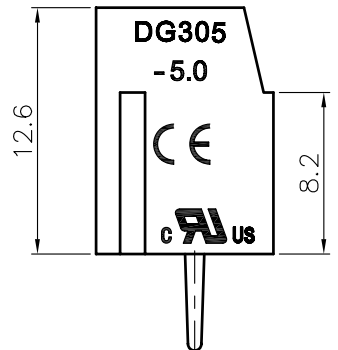
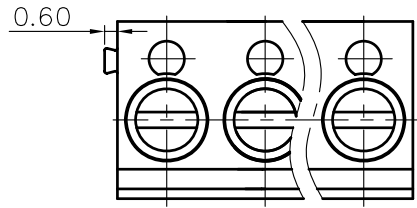


REVISION RECORD				
REV	ECN	DESCRIPTION	DRFT	DATE



- NOTES:
- 1.DIMENSION SHALL BE INTERPRETED PER ASME Y14.5-2009.
  - 2.PITCH: 5.0MM ,POLES: 2-24P
  - 3.RATED VOLTAGE/CURRENT:UL 300V/15A IEC 250V/20A
  - 4.OPERATION TEMPERATURES: -30°C~+120°C
  - 5.WITHSTANDING VOLTAGE: AC2000V/1MIN
  - 6.INSULATION RESISTANCE: 5000MΩ/DC1000V
  - 7.WIRE RANGE: 22~14AWG,2.5MM<sup>2</sup>
  - 8.MAX.TORQUE VALUE: M2.5,3.0KGF.CM
  - 9.UNDIMENSIONED TOLERANCES:

TO	PITCH RANGE IN MM		NOMINAL DIMENSION RANGE IN MM				TOLERANCE	
	OVER 6 TO 10	OVER 10 TO 24	OVER 30 TO 60	OVER 60 TO 100	OVER 100 TO 150	OVER 150		
±0.10	±0.15	±0.25	±0.20	±0.30	±0.50	±0.70	±1.00	0.05/10

ITEM	NAME OF PART	NO. OF PART	Q	TY	MATERIAL	NOTES
4	DG305-Pin header	4003B00010(H)	XX		Brass	Tin pladed
3	DG305-Screws	S000001620(H)	XX		Steel	Cr <sup>3+</sup> Zn
2	DG305-spring	X000000260(H)	XX		Stainless steel	
1	DG305-5.0-Housing	4003AYYXXA(H)	1		PBT	UL94V-0

DETACHED LISTS	MM (INCH)		MATERIAL:		<b>DEGSON®</b>	
	TOLERANCES EXCEPT AS NOTED		FINISH:			
	.X ±		.X' ±		NAME: DG305-5.0-XXP-1Y-00A(H)	
	.XX ±		.XX' ±			
	.XXX ±		.XXX' ±		PART NO.:	
ANGLES ± 1'		APPD:		TITLE: ASSEMBLY DRAWING		
THIRD ANGLE PROJECTION		CHKD:		DRAWING NO.: DG305-5.0-E02		
		DRFT: Haoyh 03/18/05"		DO NOT SCALE DRAWING		
		SCALE: 1:1		REV: T6		
		SHEET: 1/1				