



Connectors > PCB Connectors > Backplane Connectors > Rack & Panel Backplane > Rack & Panel Keying



Connector Keying Accessory Type: **Keying Guide**

Features

Product Type Features

Comment	Rugged Connector
Connector Keying Accessory Type	Keying Guide

Body Features

Primary Product Material	Passivated Stainless Steel
--------------------------	----------------------------

Product Compliance

[For compliance documentation, visit the product page on TE.com>](#)

EU RoHS Directive 2011/65/EU	Compliant with Exemptions
EU ELV Directive 2000/53/EC	Compliant with Exemptions
China RoHS 2 Directive MIIT Order No 32, 2016	Restricted Materials Above Threshold
EU REACH Regulation (EC) No. 1907/2006	Current ECHA Candidate List: JAN 2021 (211) Candidate List Declared Against: JAN 2017 (173) SVHC > Threshold: Not Yet Reviewed
Halogen Content	Not Yet Reviewed for halogen content
Solder Process Capability	Not applicable for solder process capability

Product Compliance Disclaimer

This information is provided based on reasonable inquiry of our suppliers and represents our current actual knowledge based on the information they provided. This information is subject to change. The part numbers that TE has identified as EU RoHS compliant have a maximum concentration of 0.1% by weight in homogenous materials for lead, hexavalent chromium, mercury, PBB, PBDE, DBP, BBP, DEHP, DIBP, and 0.01% for cadmium, or qualify for an exemption to these limits as defined in the Annexes of Directive 2011/65/EU (RoHS2). Finished electrical and electronic equipment products will be CE marked as required by Directive 2011/65/EU. Components may not be CE marked. Additionally, the part numbers that TE has identified as EU ELV compliant have a maximum concentration of 0.1% by weight in homogenous materials for lead, hexavalent chromium, and mercury, and 0.01% for cadmium, or qualify for an exemption to these limits as defined in the Annexes of Directive 2000/53/EC (ELV). Regarding the REACH Regulations, TE's information on SVHC in articles for this part number is still based on the European Chemical Agency (ECHA) 'Guidance on requirements for

substances in articles' (Version: 2, April 2011), applying the 0.1% weight on weight concentration threshold at the finished product level. TE is aware of the European Court of Justice ruling of September 10th, 2015 also known as O5A (Once An Article Always An Article) stating that, in case of 'complex object', the threshold for a SVHC must be applied to both the product as a whole and simultaneously to each of the articles forming part of its composition. TE has evaluated this ruling based on the new ECHA "Guidance on requirements for substances in articles" (June 2017, version 4.0) and will be updating its statements accordingly.

Also in the Series | Fortis LRM



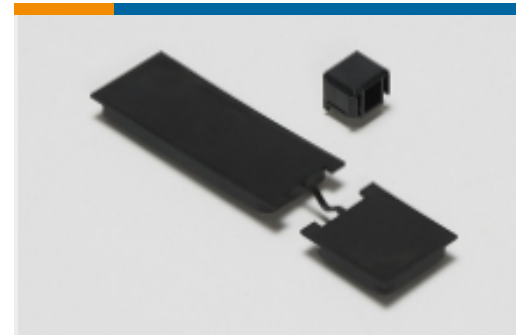
Other Rack & Panel Accessories(8)



PCB RF Modules(1)



Rack & Panel Connectors(7)



Rack & Panel Covers & Plugs(1)

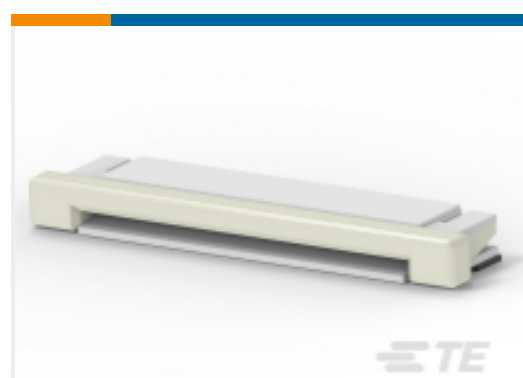


Rack & Panel Keying(4)

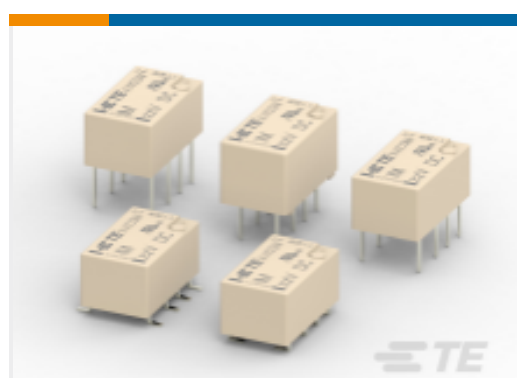
Customers Also Bought



TE Part #2-5174339-5
D-Sub Plug Assembly: Standard,
Vertical, 1.27mm



TE Part #2-1734592-0
0.5mm FPC Connectors



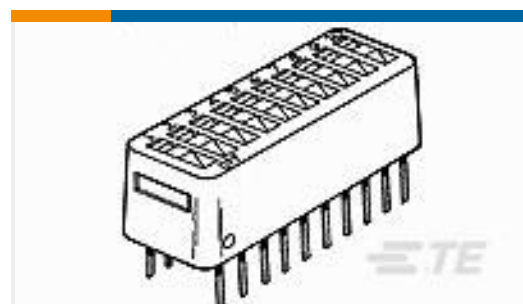
TE Part #2-1462039-7
Standard Signal Relay 2 Form C, 2 CO
Cont



TE Part #2-5767004-2
MICTOR RECEPT ASSY, 38 POS.



TE Part #2065657-1
zd Plus, 4 pair, receptacle assy



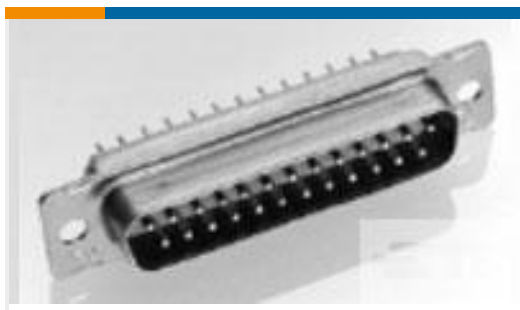
TE Part #2-435668-8
DIP SW 8 POSN W/TAPE AU



TE Part #103328-3
06 MODII HDR DRST B/A .100CL



TE Part #YDTS20W25-24PAV001
D38999: Square Flange, 25-24 insert



TE Part #1757830-2
AMPLIMITE, RCPT ASY, POSTD, 109, ZN,
2



TE Part #2102440-1
FORTIS LRM, RIGHT ANGLE MODULE,
MBXL

Documents

Product Drawings

[FORTIS LRM, KEYWAY, PASSIVATED](#)

English

CAD Files

[3D PDF](#)

3D

Customer View Model

[ENG_CVM_CVM_2102503-2_1.2d_dxf.zip](#)

English

Customer View Model

[ENG_CVM_CVM_2102503-2_1.3d_igs.zip](#)

English

Customer View Model

[ENG_CVM_CVM_2102503-2_1.3d_stp.zip](#)

English

By downloading the CAD file I accept and agree to the [Terms and Conditions](#) of use.

Datasheets & Catalog Pages

[Fortis Zd LRM](#)

English

Product Specifications

[Product Specification](#)

English