

SNAP-ON CONTACTS



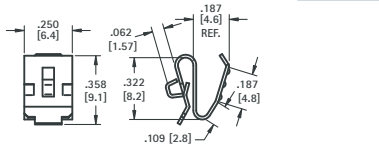
- Economical and reliable contacts are ideal for molded cases with self contained battery compartments
- Solder "ear" to facilitate soldering of wire lead
- Unique spring tension contact adjusts to variations in battery length
- Reliable spring tension contacts assure low contact resistance
- Clips easily onto .060 (1.52) to .070 (1.78) panel edge
- Sharp barbs securely anchor contact in place

Refer to page 34 for Battery Contact Layout & Mounting Details

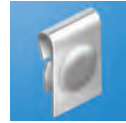
"AAA" • "AAAA" • "N" • "12V"



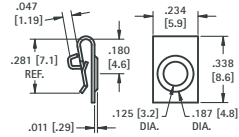
CAT. NO. 204



MATERIAL: .010 (.25) Spring Steel, Nickel Plate



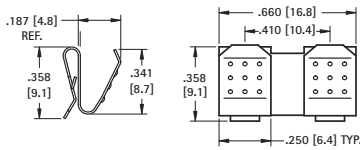
CAT. NO. 238



MATERIAL: .010 (.25) Spring Steel, Nickel Plate



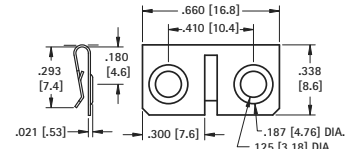
CAT. NO. 202



MATERIAL: .010 (.25) Spring Steel, Nickel Plate



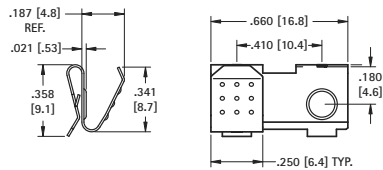
CAT. NO. 294



MATERIAL: .010 (.25) Spring Steel, Nickel Plate



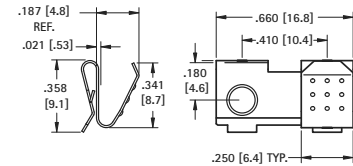
CAT. NO. 295



MATERIAL: .010 (.25) Spring Steel, Nickel Plate



CAT. NO. 296

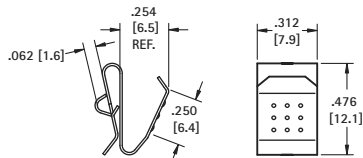


MATERIAL: .010 (.25) Spring Steel, Nickel Plate

"AA" • "CR2" • "A"



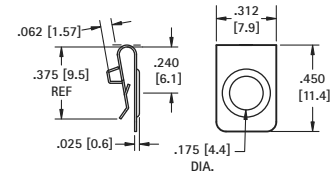
CAT. NO. 209



MATERIAL: 012 (.30) Spring Steel, Nickel Plate



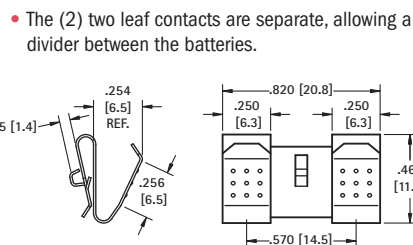
CAT. NO. 228



MATERIAL: 010 (.25) Spring Steel, Nickel Plate



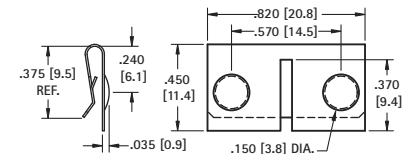
CAT. NO. 288



MATERIAL: 012 (.30) Spring Steel, Nickel Plate



CAT. NO. 292

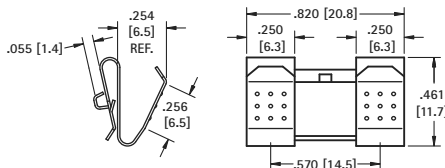


MATERIAL: 010 (.25) Spring Steel, Nickel Plate



CAT. NO. 210

- The (2) two leaf contacts are held together by a web. This design offers greater stability.

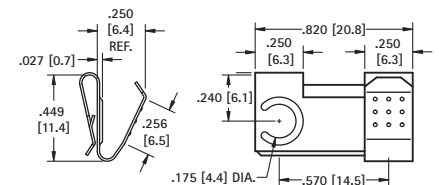


MATERIAL: .012 (.30) Spring Steel, Nickel Plate



CAT. NO. 291 Right

CAT. NO. 290 Left (shown)



MATERIAL: 012 (.30) Spring Steel, Nickel Plate

BATTERY CONTACTS FOR MOLDED CASES

SLIDE-IN MOUNT CONTACTS

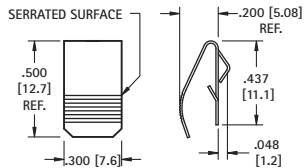
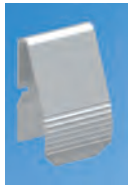


- Economical and reliable contacts are ideal for molded cases with self contained battery compartments
- Solder "ear" to facilitate soldering of wire lead
- Unique spring tension contact adjusts to variations in battery lengths
- Reliable spring tension contacts assure low contact resistance
- Clips easily onto .060 (1.52) to .070 (1.78) panel edge
- Sharp barbs securely anchor contact

Refer to page 34 for Battery Contact Layout & Mounting Details

"AA" - "CR2" - "A" - "9V"

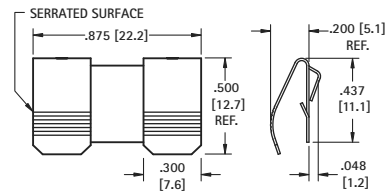
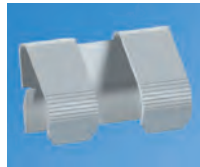
- Press fit into housing groove.



CAT. NO. 5205

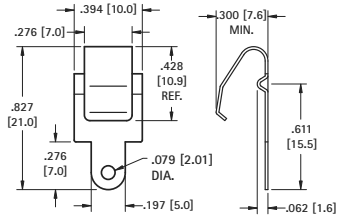
MATERIAL: .012 (.30) Spring Steel, Nickel Plate

"AA"



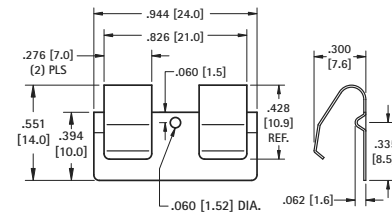
CAT. NO. 5206

MATERIAL: .012 (.30) Spring Steel, Nickel Plate



CAT. NO. 5209

MATERIAL: .012 (.30) Phosphor Bronze, Nickel Plate



CAT. NO. 5208

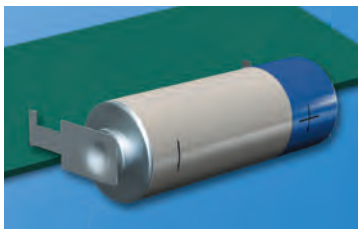
MATERIAL: .012 (.30) Phosphor Bronze, Nickel Plate

SLIDE-IN P.C. MOUNT CONTACTS

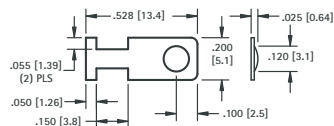
- Economical and reliable contacts
- Designed for direct placement onto PCB, no wire leads required
- Unique spring tension adjusts to variations in battery length

- Reliable spring tension assure low contact resistance and dependable connection
- Symmetrical design allows these contacts to function both as a positive and negative contacts

"AAA" - "AAAA" - "N" - "12V"



- "Off-Board" edge mounting design frees up valuable board space

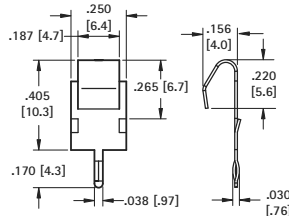


CAT. NO. 230-1

MATERIAL: .008 (.20) Spring Steel, Nickel Plate

UNIVERSAL BATTERY SIZES

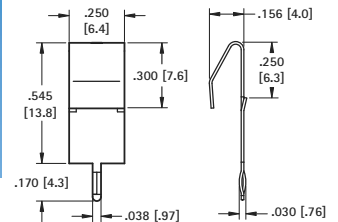
MATERIAL: .012 (.30) Phosphor Bronze, Tin-Nickel Plate



CAT. NO. 1021-1

CAT. NO.	(L) Length
109-2	.840 (21.3)
109-3	1.000 (25.4)

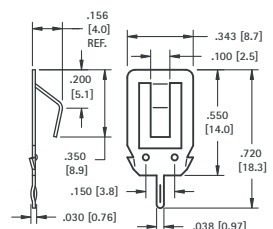
MATERIAL: .012 (.30) Spring Steel, Nickel Plate



CAT. NO. 1017-1

CAT. NO. 108-2

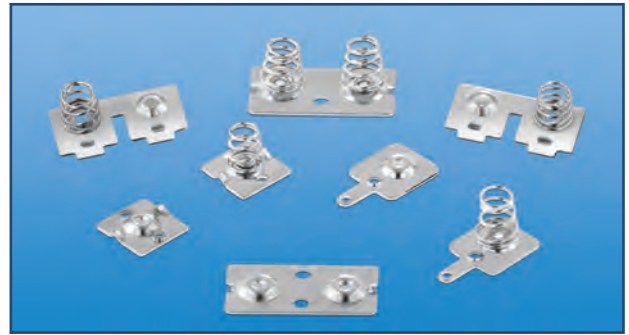
- Made from corrosion resistant Stainless Steel



MATERIAL: .012 (.30) Stainless Steel, Tin-Nickel Plate

SPRING & BUTTON CONTACTS

- Economical and reliable contacts are ideal for molded cases with self contained battery compartments
- "Solder tab" design for either wire lead or PC mounting
- Unique spring contacts adjust to variations in battery lengths
- Reliable spring contacts assure low contact resistance and a dependable connection
- Space saving, economical, excellent mechanical construction

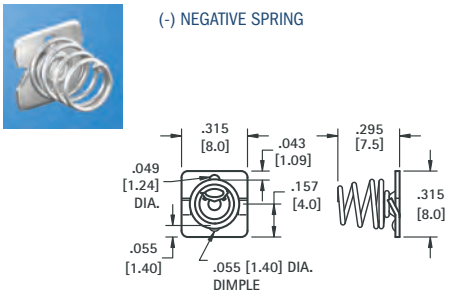


Refer to page 35 for Battery Contact Layout & Mounting Details

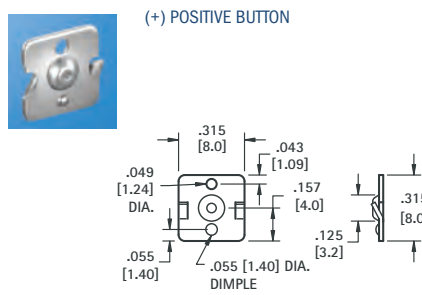
MATERIAL:

Plate: .020 (.51) Steel, Nickel Plate **Spring:** Spring Steel, Nickel Plate

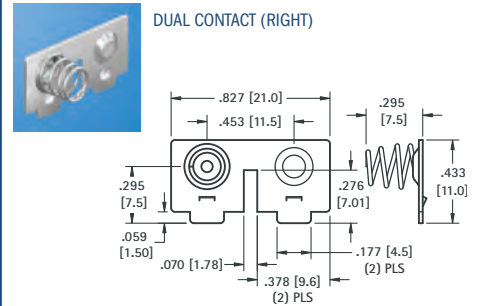
"AAA" • "AAAA" • "N" • "12V"



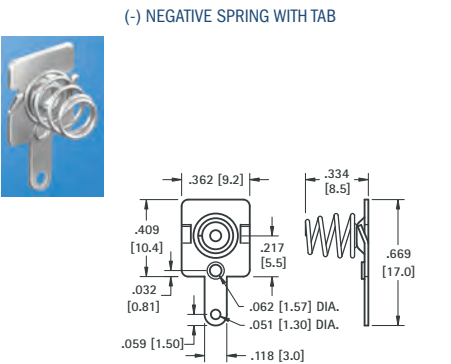
CAT. NO. 5203



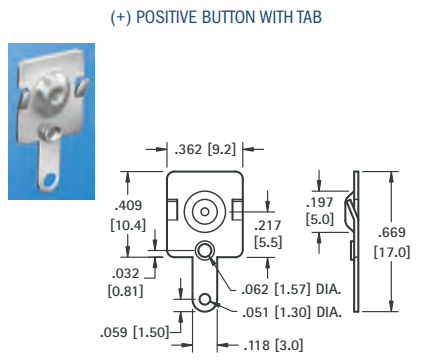
CAT. NO. 5225



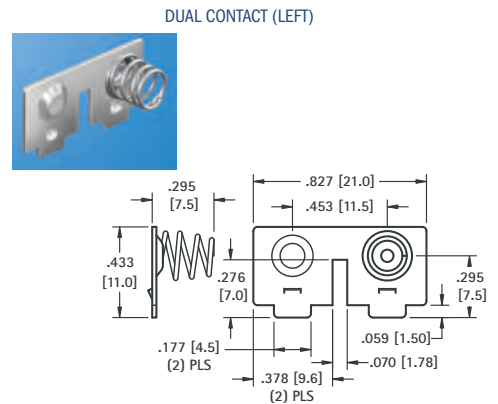
CAT. NO. 5213



CAT. NO. 5204

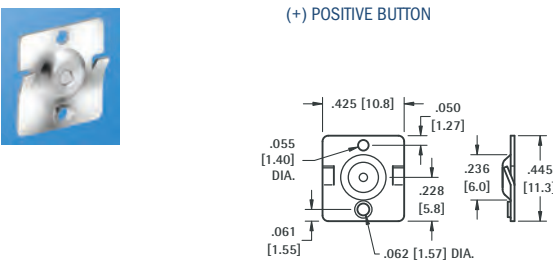


CAT. NO. 5226

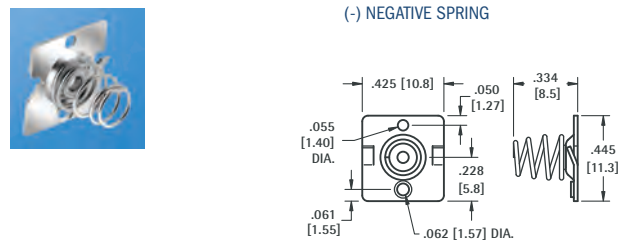


CAT. NO. 5214

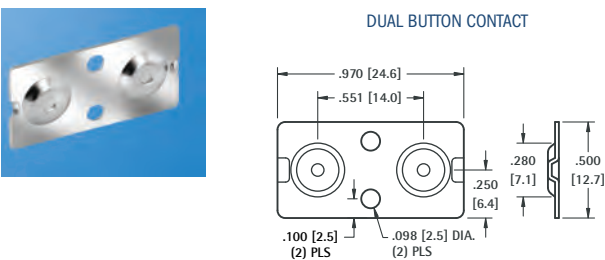
"AA" • "CR2" • "A"



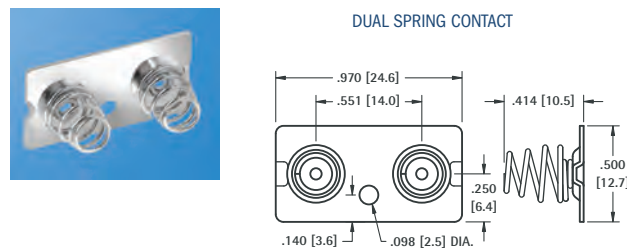
CAT. NO. 5224



CAT. NO. 5202



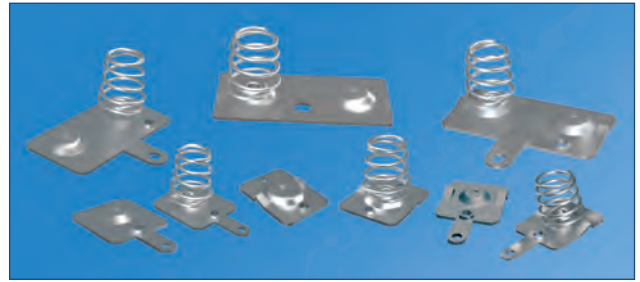
CAT. NO. 5227



CAT. NO. 5228

SPRING & BUTTON CONTACTS

- Economical and reliable contacts are ideal for molded cases with self contained battery compartments
- "Solder tab" design for either wire lead or PC mounting
- Unique spring contacts adjust to variations in battery lengths
- Reliable spring contacts assure low contact resistance and a dependable connection
- Space saving, economical, excellent mechanical construction



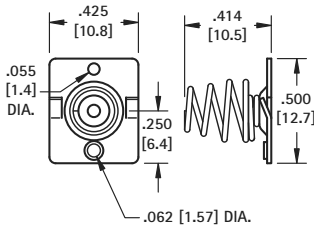
MATERIAL:

Plate: .020 (.51) Steel, Nickel Plate **Spring:** Spring Steel, Nickel Plate

Refer to page 35 for Battery Contact Layout & Mounting Details

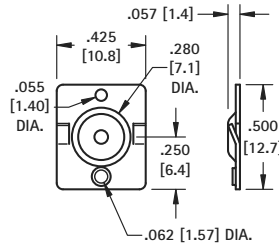
"AA" • "CR2" • "A"

(-) NEGATIVE SPRING



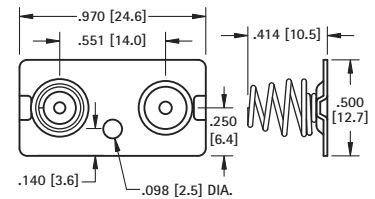
CAT. NO. 5222

(+) POSITIVE BUTTON



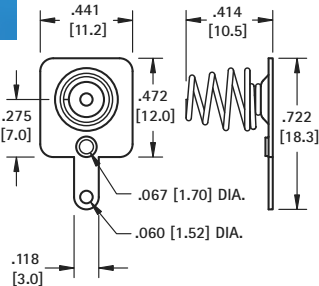
CAT. NO. 5221

DUAL CONTACT



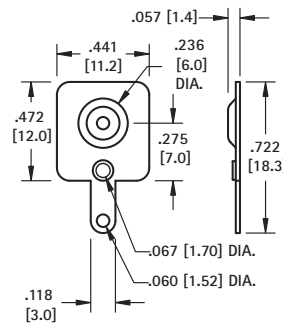
CAT. NO. 5212 Left or Right

(-) NEGATIVE SPRING WITH TAB



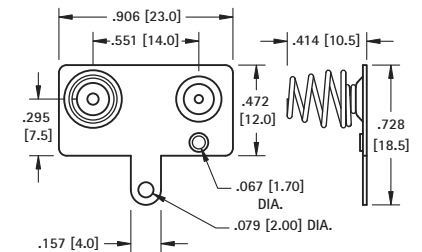
CAT. NO. 5201

(+) POSITIVE BUTTON WITH TAB



CAT. NO. 5223

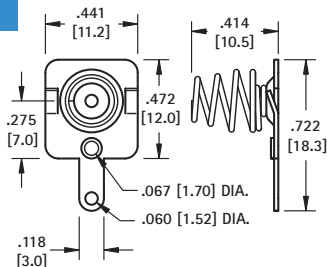
DUAL CONTACT WITH TAB



CAT. NO. 5210 Left

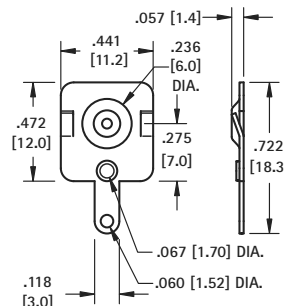
CAT. NO. 5211 Right (Shown)

(-) NEGATIVE SPRING WITH TAB/LANCE



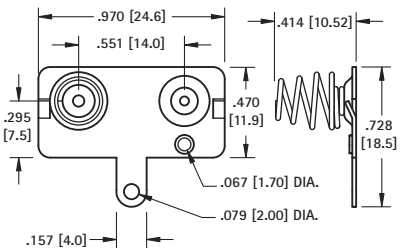
CAT. NO. 5220

(+) POSITIVE BUTTON WITH TAB/LANCE



CAT. NO. 5219

DUAL CONTACT WITH TAB/LANCE



CAT. NO. 5218 Left

CAT. NO. 5217 Right (Shown)

SPRING & BUTTON CONTACTS

BATTERY CONTACTS FOR MOLDED CASES

- Economical and reliable contacts are ideal for molded cases with self contained battery compartments
- "Solder tab" design for either wire lead or PC mounting
- Unique spring contacts adjust to variations in battery lengths
- Reliable spring contacts assure low contact resistance and a dependable connection
- Space saving, economical, excellent mechanical construction

MATERIAL:

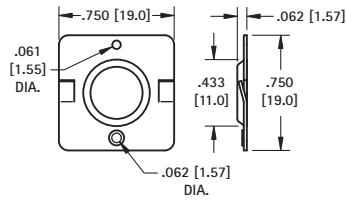
Plate: .020 (.51) Steel, Nickel Plate **Spring:** Spring Steel, Nickel Plate



Refer to page 35 for Battery Contact Layout & Mounting Details

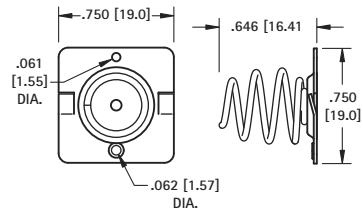
"C" CELL

(+) POSITIVE BUTTON



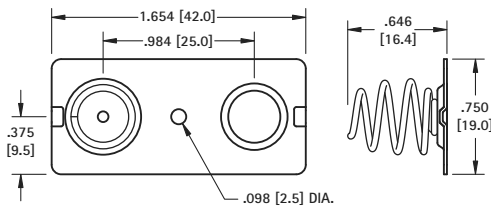
CAT. NO. 5240

(-) NEGATIVE SPRING



CAT. NO. 5241

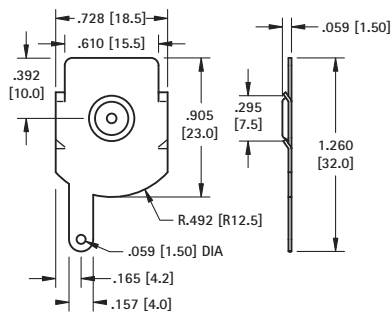
DUAL CONTACT



CAT. NO. 5242 Left or Right

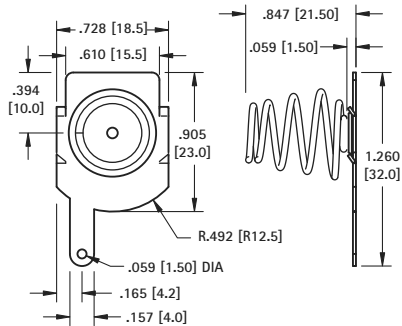
"D" CELL

(+) POSITIVE BUTTON



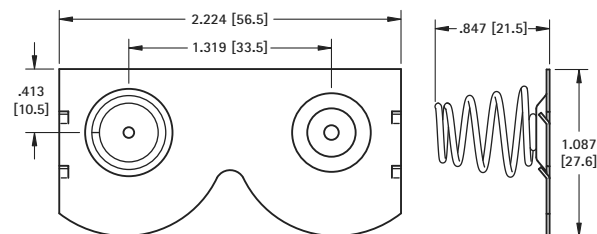
CAT. NO. 5250

(-) NEGATIVE SPRING



CAT. NO. 5251

DUAL CONTACT



CAT. NO. 5253 Left

CAT. NO. 5252 Right (Shown)