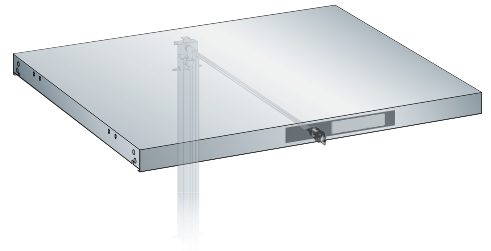


Adjustable shelf

Execution:

- Lock and solid floors: Locking and solid shelves are bolted to the pillar frames at any position and are prepared for the assembly of drawer locking systems. Includes screw material. Design: Sheet steel.



| | |
|---------------------------------|---------------------|
| Art. no. | 50303 936 |
| Brand | LISTA |
| Manufacturer Part Number | 79.244.020 |
| Width | 970 mm |
| Colour | Light grey RAL 7035 |
| Load-carrying capacity | 200 kg |
| Gross Weight | 16.000 kg |
| Product Group | 5AN |