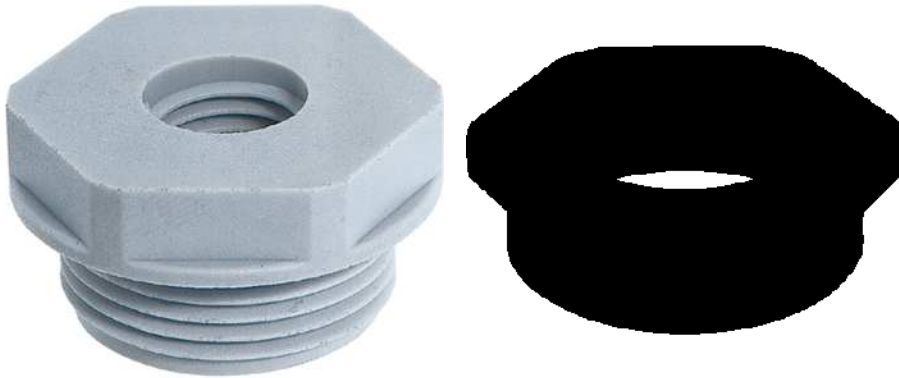


## SKINDICHT® KU-M

SKINDICHT® KU-M, polyamide, glass fibre-reinforced reducers for maximum mechanical stability, with metric connection thread



Assembly time



Space requirement



Connector with standard housing unit

### Benefits

Enables the use of cable glands with smaller connection threads than the existing threaded holes

### Application range

Machines  
Devices  
Housings

### Product Make-up

Metric connection thread acc. to DIN EN 60423  
Basis for technical information DIN IEC 62444

### Technical Data

Classification ETIM 5:

ETIM 5.0 Class-ID: EC000441  
ETIM 5.0 Class-Description: Cable screw gland

Classification ETIM 6:

ETIM 6.0 Class-ID: EC000441  
ETIM 6.0 Class-Description: Cable screw gland

Colour delivered:

Light grey (RAL 7035)  
Black (RAL 9005), UV-resistant

Material:

Polyamide, glass fibre-reinforced

Temperature range:

-40 °C to +100 °C

### Note

Photographs and graphics are not to scale and do not represent detailed images of the respective products.

Last Update (26.05.2023)

©2023 Lapp Group - Technical changes reserved

Product Management [www.lappkabel.de](http://www.lappkabel.de)

You can find the current technical data in the corresponding data sheet.

PN 0456 / 02\_03.16

## SKINDICHT® KU-M

Prices are net prices without VAT and surcharges. Sale to business customers only.

## SKINDICHT® KU-M

Article number	Thread, male M1	Thread, female M2	SW wrench size mm	Thread length D mm	Pieces / PU
SKINDICHT® KU-M light grey					
52104505	16 x 1.5	12 x 1.5	22	9	100
52104470	20 x 1.5	12 x 1.5	24	9	100
52104504	20 x 1.5	16 x 1.5	24	9	100
52104472	25 x 1.5	12 x 1.5	29	10	100
52104473	25 x 1.5	16 x 1.5	29	10	100
52104474	25 x 1.5	20 x 1.5	29	10	100
52104475	32 x 1.5	12 x 1.5	36	12	50
52104476	32 x 1.5	16 x 1.5	36	12	50
52104477	32 x 1.5	20 x 1.5	36	12	50
52104478	32 x 1.5	25 x 1.5	36	12	50
52104479	40 x 1.5	16 x 1.5	46	12	50
52104480	40 x 1.5	20 x 1.5	46	12	50
52104481	40 x 1.5	25 x 1.5	46	12	25
52104482	40 x 1.5	32 x 1.5	46	12	25
52104483	50 x 1.5	20 x 1.5	55	14	5
52104484	50 x 1.5	25 x 1.5	55	14	5
52104485	50 x 1.5	32 x 1.5	55	14	5
52104486	50 x 1.5	40 x 1.5	55	14	5
52104487	63 x 1.5	25 x 1.5	68	15	5
52104488	63 x 1.5	32 x 1.5	68	15	5
52104489	63 x 1.5	40 x 1.5	68	15	5
52104469	63 x 1.5	50 x 1.5	68	15	5
SKINDICHT® KU-M black					
52104541	16 x 1.5	12 x 1.5	20	8	100
52104520	20 x 1.5	12 x 1.5	24	8	100
52104521	20 x 1.5	16 x 1.5	24	9	100
52104522	25 x 1.5	12 x 1.5	29	8	100
52104523	25 x 1.5	16 x 1.5	29	8	100
52104524	25 x 1.5	20 x 1.5	30	10	100
52104526	32 x 1.5	16 x 1.5	36	10	50
52104527	32 x 1.5	20 x 1.5	36	10	50
52104528	32 x 1.5	25 x 1.5	36	11	50
52104529	40 x 1.5	16 x 1.5	46	10	50
52104530	40 x 1.5	20 x 1.5	46	10	50

Last Update (26.05.2023)

©2023 Lapp Group - Technical changes reserved

Product Management www.lappkabel.de

You can find the current technical data in the corresponding data sheet.

PN 0456 / 02\_03\_16

**SKINDICHT® KU-M**

Article number	Thread, male M1	Thread, female M2	SW wrench size mm	Thread length D mm	Pieces / PU
52104531	40 x 1.5	25 x 1.5	46	10	25
52104532	40 x 1.5	32 x 1.5	44	12	25
52104533	50 x 1.5	20 x 1.5	55	12	5
52104534	50 x 1.5	25 x 1.5	55	12	5
52104535	50 x 1.5	32 x 1.5	55	12	5
52104536	50 x 1.5	40 x 1.5	55	13	5
52104537	63 x 1.5	25 x 1.5	68	12	5
52104538	63 x 1.5	32 x 1.5	68	12	5
52104539	63 x 1.5	40 x 1.5	68	12	5
52104540	63 x 1.5	50 x 1.5	70	15	5

Last Update (26.05.2023)

©2023 Lapp Group - Technical changes reserved

Product Management [www.lappkabel.de](http://www.lappkabel.de)

You can find the current technical data in the corresponding data sheet.

PN 0456 / 02\_03\_16