

# @-box *micro*

**C**ompact  
**S**ilent  
**V**ersatile  
**U**ser-Friendly

*@-box micro* centrifugal in-line fan combines innovative features to increase efficiency, reduce noise and make installation easier.





## CENTRIFUGAL IN-LINE SLIM BOX



**@-box<sup>micro</sup>** centrifugal in-line fan is **extremely flat and compact** (h=122 mm) and has been designed to offer the best solution in those installations that require **small to medium air flow** and where a **very narrow height or limited space is available**.

Based on the concept of modularity, **@-box<sup>micro</sup>** offers a **vast choice of inlet & outlet options** to enable ducting from multiple sources and to suit a wide range of residential and commercial applications.

**@-box<sup>micro</sup>** flexible solutions and **advanced technical features (silence, high performance, trouble free and long life operation)** provide a powerful and ideal combination between final users' requirements and the technology of a high specification product.

## Technical features

- Casing in galvanized steel sheet. Inlet and outlet in shock proof self-extinguishing high quality technopolymer.
- **Integral junction box.**
- Backward curved blades dynamically balanced on external rotor motor provided with non-self-resetting thermal cut-out.
- **Swing-out motor and impeller** for ease of cleaning and maintenance.
- Ball bearing motor, permanently lubricated for maintenance free operation and continuous running.
- Can be used with flexible and rigid ducting.
- Supplied with ceiling/wall fixing plate.
- Supplied with **retaining rings** to avoid the use of clamps.
- Fan complies with EN 60335-2-80, EC Low Voltage Directive 73/23 – 93/68 and EC Directive EMC 89/336.

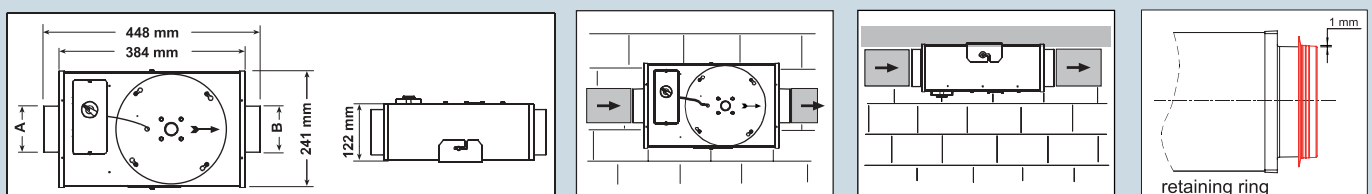
## Options

- Inlet & Outlet diameters combinable from 80 to 125 mm
- Acoustic insulation polyurethane foam
- Timer (integral adjustable from 3 to 25 mn)
- 2 speed
- Integral 5 speed speed controller
- "Low speed & Boost" facility for continuous ventilation

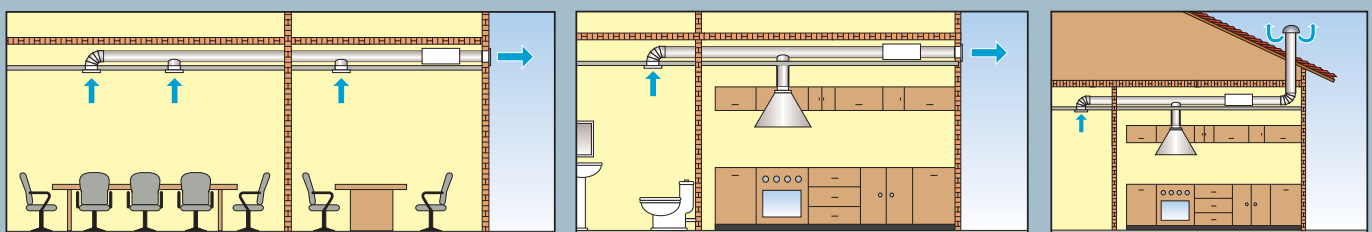
\* **Patent pending**

## COMPACT SIZES

### DIMENSIONS (mm)

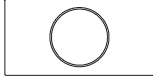



## APPLICATIONS



# FLEXIBILITY

## MODELS combinable spigots from 80 to 125 mm

INLET (A)			OUTLET (B)	
$\varnothing 100$ ( $\varnothing 96$ ) $\varnothing 125$ ( $\varnothing 120$ )		$\varnothing 80/80$ ( $\varnothing 76 / \varnothing 76$ ) $\varnothing 80/100$ ( $\varnothing 76 / \varnothing 96$ ) $\varnothing 80/125$ ( $\varnothing 76 / \varnothing 120$ )		$\varnothing 100$ ( $\varnothing 96$ ) $\varnothing 125$ ( $\varnothing 120$ )

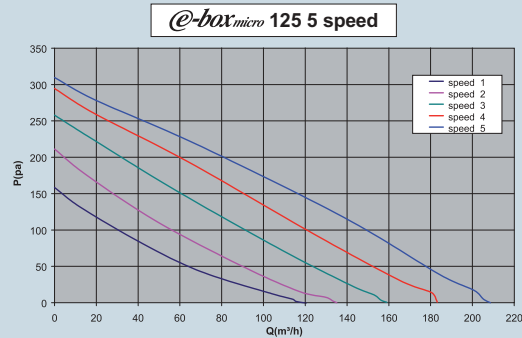
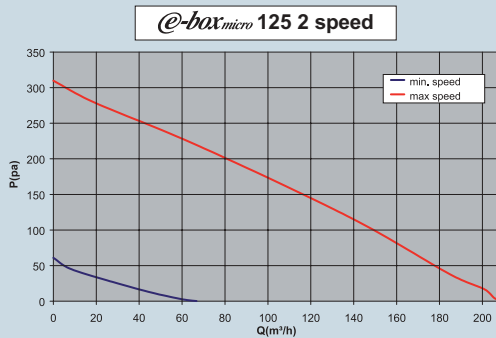
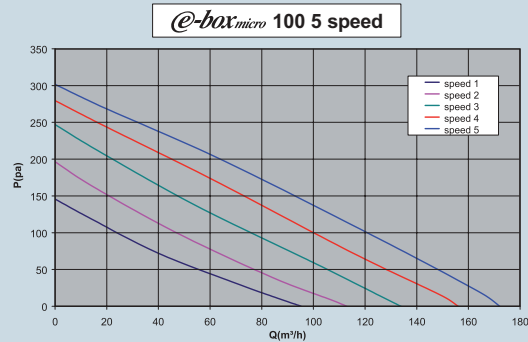
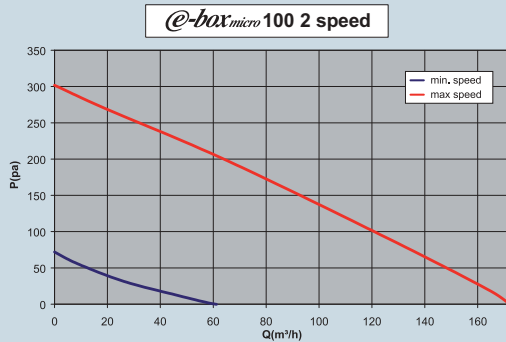
# PERFORMANCE

## SPECIFICATION

@-box <sub>micro</sub>	RPM	m <sup>3</sup> /h max	l/s max	Pa max	dB(A)* @ 3 m max	W max	V Hz	Speed controller	Protection
<b>100 - 100</b>	1960	172	48	302	34,4	60	230-50/60	RVS / RVN	IPX4
<b>125 - 125</b>	1890	208	58	310	36,9	61	230-50/60	RVS / RVN	IPX4

\*Lp(A) at 3 m in a non reverberating room at the maximum fan efficiency

# CURVES



# SILENCE & COMFORT

- Aerodynamic constructive features to avoid any vibration
- Acoustically isolated (insulation foam on request)
- Suitable for continuous running (24H)
- Speed controllable



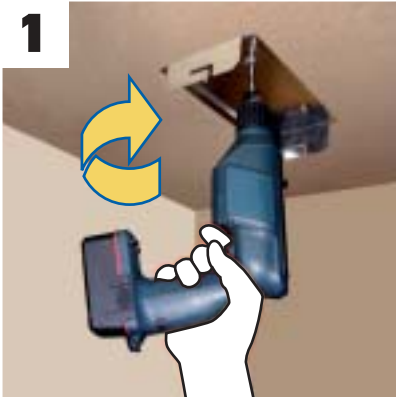
### RVN

Electronic speed controller. Infinitely variable speed control by potentiometer.  
 ON/OFF switch - IP42 protection  
 Max. load: 300 W (1,5 A)  
 Supply voltage: 230V-50 / 60 Hz  
 Sizes: 110 x 110 x 58 mm  
 Weight: 0,5 kg



### RVS

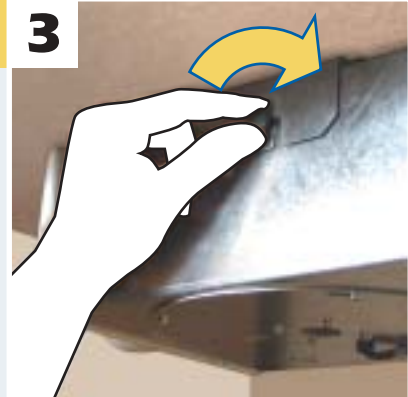
5 steps speed controller (fitted with transformer)  
 ON/OFF switch  
 IP42 protection  
 Max. load: 100 W (0,5 A)  
 Supply voltage: 230V-50/60 Hz  
 Sizes: 118 x 118 x 58 mm  
 Weight: 0,7 kg

**USER FRIENDLY / FIT & FORGET****1**

Fix the plate

**2**

Hook the fan

**3**

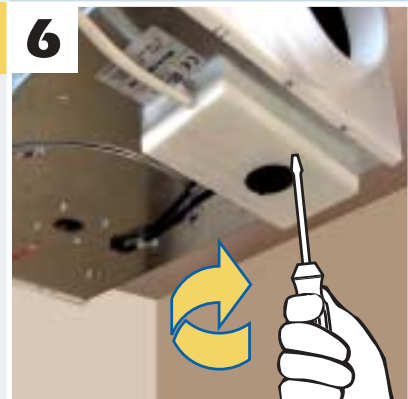
Fix the fan turning the knobs clock-wise

**4**

Remove the terminal for easy connection

**5**

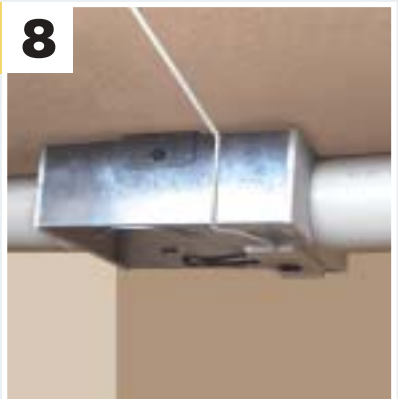
Fix the connected terminal into the integral junction box

**6**

Fix the junction box cover

**7**

Install duct

**8**

Installation completed

Further information is available on [www.elicent.it](http://www.elicent.it)

We reserve the right to modify any technical data without notice.

**ELICENT S.p.A.**

Via L. Da Vinci, 4 - 25017 Lonato (BS) Italy

Tel. +39 030 9913751

Fax +39 030 9913781

E-mail: [sales@elicent.it](mailto:sales@elicent.it)Home page: [www.elicent.it](http://www.elicent.it)