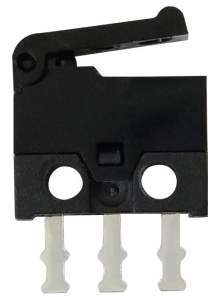


# Micro Switch

## Features

- Snap-action switch
- Micro switch with solder/PCB terminals
- Simple construction and high reliability for long time
- Robust design



## Functional Specification

Rated Voltage	30 VDC
Rated Current	500 mA
Contact Resistance	100 mOhm
Lever over Travel	< 0.3 mm
Operating Force	50 gf (max)
Actuator Type	Hinge Lever
Termination Type	PCB Terminals

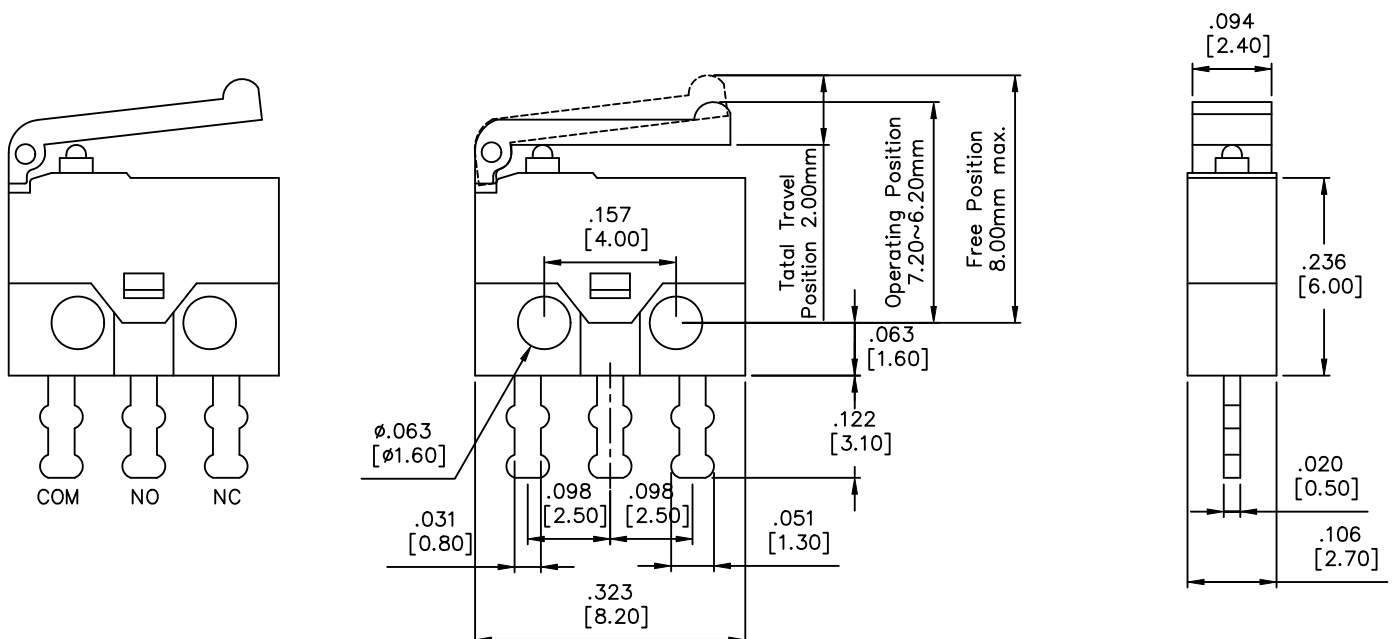
## Reliability Rating

Mechanical Life	300000 Cycles min.
Electrical Life	10000 Cycles
Insulation Resistance	100 MOhm @ 500 VDC
Dielectric Withstanding Voltage	250 VAC 1 min
Soldering Temperature	260 ± 5 °C
Operating Temperature	-20 ... 70 °C

## Material Specification

Body	PBT
Cover	POM
Lever	POM
Button	POM
Contact	BeCu with Ag
Terminals	Brass with Ag

## Drawing



**Art. Nr.**  
**RND 210-00757**