

RUGGED STEEL BATTERY HOLDERS



An established design that has gained wide acceptance for commercial and military applications. Batteries are held under constant spring tension assuring low contact resistance. Retainer clips are available to lock batteries in place and prevent shifting or loosening. Refer to page 10. Recommended for use where shock or severe vibration is encountered. Special fabrication for more than four batteries or variations from standard stock parts can be assembled to meet your requirements.

- Ideal for NiCd, Alkaline, NiMH, Carbon, Zinc and Lithium Cells
- Corrosion Resistant, Nickel Plate
- Brass Contacts, Nickel Plate
- Moisture Proof Resin Impregnated, Fibre Insulating Washers

FIG. 1 STAINLESS STEEL BASE. INSULATOR TUBES SUPPLIED FOR 2-3-4 CELLS (END TO END)



FIG. 2 STEEL BASE. LITHIUM (SINGLE CELL)

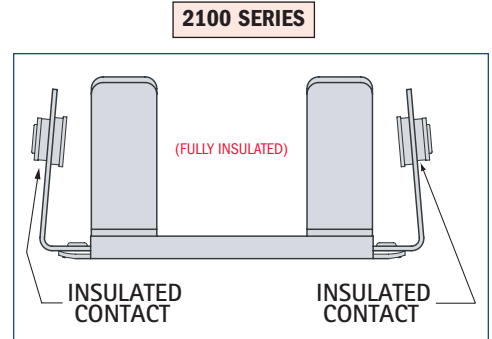
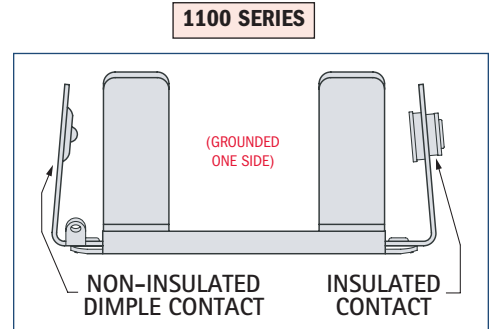


FIG. 3 PHENOLIC BASE FOR 2, 3, 4 CELLS (SIDE BY SIDE)



STEEL BATTERY HOLDERS

1100 SERIES	2100 SERIES	BATTERY CROSS REFERENCE					
ONE CONTACT INSULATED CAT. NO.	ALL CONTACTS INSULATED CAT. NO.	HOLDS NO. OF CELLS	FIG. NO.	EVEREADY	DURACELL	RAY-O-VAC	NEDA
"AA" CELL HOLDERS							
				(BATTERY SIZE $\frac{.531 (13.4)}{.565 (14.5)}$ O.D. \times $\frac{1.906 (48.4)}{1.988 (50.0)}$ L)			
1139	2139	1	1	E9, EV15, EN91,	ZM9, RM12R, NC15AA,	5AA,	15, 15A, 15C, 15D, 15F,
—	2140*	2	3	CH15, E133,	M15F, M15AA,	615,	15M, 15NC,
—	2171*	3	3	E133N, E177,	TR133R, TR177,	815, 7AA	221, 1101M,
—	2182*	4	3	505, 523,	M505, MN1500,		1113M,
1189	2189	2	1	1015, 1215	PC1500		1306AP,
1191	2191	3	1				1306M,
1194	2194	4	1				1314M, 1606M
"C" CELL HOLDERS							
				(BATTERY SIZE $\frac{.875 (22.2)}{1.125 (28.6)}$ O.D. \times $\frac{1.875 (47.6)}{1.969 (50.5)}$ L)			
1173	2173	1	1	CH35, E93, 935, 1235, EV35, EN93	M14F, M14HD, NC14C, TR286, MN1400, PC1400	1C, 614, 814	14A, 14C, 14D, 14F, 14NC, 1600M
—	2174*	2	3				
—	2187*	3	3				
—	2188*	4	3				
1185	2185	2	1				
1195	2195	3	1				
1198	2198	4	1				
"D" CELL HOLDERS							
				(BATTERY SIZE $\frac{1.187 (30.1)}{1.375 (34.9)}$ O.D. \times $\frac{2.312 (48.4)}{2.412 (50.0)}$ L)			
1175	2175	1	1	CH50, E95, 950, 1250, EV50, EN95	M13F, NC13D, S42, M13HD, TR289, MN1300, PC1300	2D, 6D, 613, 813	13A, 13C, 13D, 13F, 13NC, 1115M, 1810M
—	2176*	2	3				
—	2190*	3	3				
—	2192*	4	3				
1186	2186	2	1				
1199	2199	3	1				
1162	2162	4	1				



MODIFICATIONS

We welcome the opportunity to quote on variations of standard items. Use our engineering service for your custom - built holders. Holders with PC and Quick-Fit terminals available on special order.

LITHIUM CELL HOLDERS ALL CONTACTS INSULATED	BATTERY	FIG. NO.	BATTERY SIZE	DURACELL	PANASONIC	SANYO
1103	"1/2 AA"	2	.510 (12.95) \times .990 (25.15)	Px28L	CR14250	CR14250SE
1105	"1/2 A"	2	.661 (16.80) \times .886 (22.50)	BR-1/2A	—	—

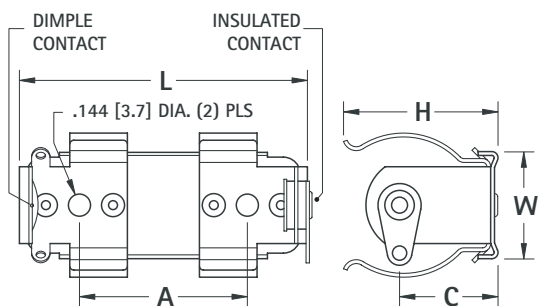
*Clips mounted on .062 (1.57) thick Phenolic board.

DIMENSIONAL DRAWINGS FOR STEEL BATTERY HOLDERS

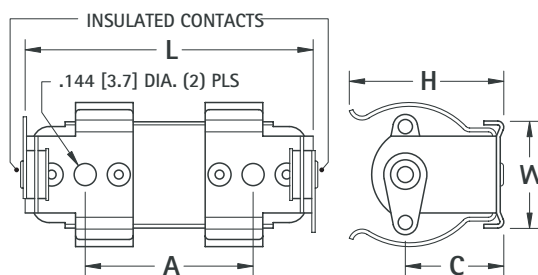
MATERIAL SPECIFICATIONS:

Clips: Spring Steel, Nickel Plate
Contact Eyelets: Brass, Nickel Plate
Insulating Washers: Moisture Proof, Resin Impregnated Fibre
Solder Lugs: Brass, Tin Plate

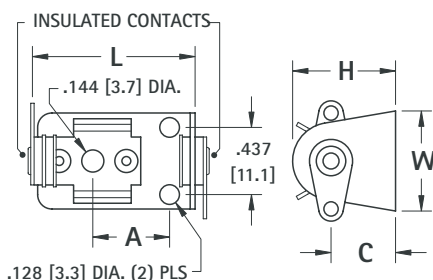
Phenolic Base: Type PBE, Per MIL-P-3115C
Stainless Steel Base: Ribbed, For Added Support
Steel Base: Spring Steel, Nickel Plate



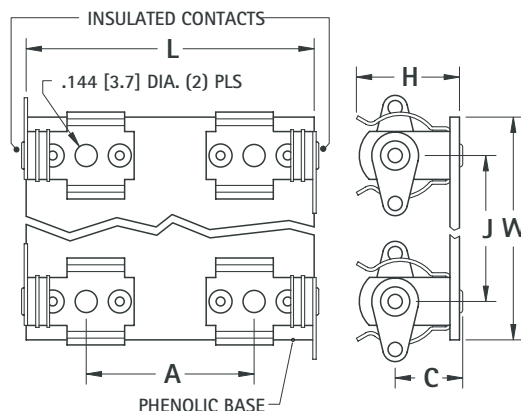
DWG. 1 FOR 1100 SERIES STAINLESS STEEL BASE (END-TO-END)



DWG. 1 FOR 2100 SERIES STAINLESS STEEL BASE (END-TO-END)



DWG. 2 FOR LITHIUM STEEL BASE (SINGLE CELL)



DWG. 3 FOR 2100 SERIES PHENOLIC BASE (SIDE-BY-SIDE)

1100 SERIES ONE CONTACT INSULATED	2100 SERIES ALL CONTACTS INSULATED	HOLDS NO. OF CELLS	DWG. NO.	W	L	H	C	J	A
CAT. NO.	CAT. NO.			Width Of Base	Length Of Base	Height Of Holder	Height to Battery Center	Mounting Hole Distance	Mounting Holes Center To Center
"AA" CELL HOLDERS									
1139	2139	1	1	.687 (17.4)	2.125 (54.0)	.656 (16.7)	.437 (11.1)	—	1.343 (34.1)
—	2140*	2	3	1.250 (31.8)	2.125 (54.0)	.656 (16.7)	.437 (11.1)	.750 (19.1)	1.343 (34.1)
—	2171*	3	3	2.000 (50.8)	2.125 (54.0)	.656 (16.7)	.437 (11.1)	.750 (19.1)	1.343 (34.1)
—	2182*	4	3	2.750 (69.9)	2.125 (54.0)	.656 (16.7)	.437 (11.1)	.750 (19.1)	1.343 (34.1)
1189	2189	2	1	.687 (17.4)	4.093 (104.0)	.656 (16.7)	.437 (11.1)	—	3.312 (84.1)
1191	2191	3	1	.687 (17.4)	6.030 (153.2)	.656 (16.7)	.437 (11.1)	—	5.250 (133.4)
1194	2194	4	1	.687 (17.4)	8.010 (203.5)	.656 (16.7)	.437 (11.1)	—	7.230 (183.6)
"C" CELL HOLDERS									
1173	2173	1	1	.687 (17.4)	2.125 (54.0)	1.000 (25.4)	.625 (15.9)	—	1.343 (34.1)
—	2174*	2	3	1.750 (44.5)	2.062 (52.4)	1.000 (25.4)	.625 (15.9)	1.187 (30.1)	1.343 (34.1)
—	2187*	3	3	2.937 (74.6)	2.062 (52.4)	1.000 (25.4)	.625 (15.9)	1.187 (30.1)	1.343 (34.1)
—	2188*	4	3	4.125 (104.8)	2.062 (52.4)	1.000 (25.4)	.625 (15.9)	1.187 (30.1)	1.343 (34.1)
1185	2185	2	1	.687 (17.4)	4.093 (104.0)	1.000 (25.4)	.625 (15.9)	—	3.312 (84.1)
1195	2195	3	1	.687 (17.4)	5.937 (150.8)	1.000 (25.4)	.625 (15.9)	—	5.156 (131.0)
1198	2198	4	1	.687 (17.4)	7.906 (200.8)	1.000 (25.4)	.625 (15.9)	—	7.125 (181.0)
"D" CELL HOLDERS									
1175	2175	1	1	.687 (17.4)	2.562 (65.1)	1.281 (32.5)	.796 (20.2)	—	1.625 (41.3)
—	2176*	2	3	2.125 (54.0)	2.562 (65.1)	1.281 (32.5)	.796 (20.2)	1.562 (39.7)	1.625 (41.3)
—	2190*	3	3	3.687 (93.6)	2.562 (65.1)	1.281 (32.5)	.796 (20.2)	1.562 (39.7)	1.625 (41.3)
—	2192*	4	3	5.250 (133.4)	2.562 (65.1)	1.281 (32.5)	.796 (20.2)	1.562 (39.7)	1.625 (41.3)
1186	2186	2	1	.687 (17.4)	4.937 (125.4)	1.281 (32.5)	.796 (20.2)	—	4.000 (101.6)
1199	2199	3	1	.687 (17.4)	7.281 (184.9)	1.281 (32.5)	.796 (20.2)	—	6.343 (161.1)
1162	2162	4	1	.687 (17.4)	9.625 (244.5)	1.281 (32.5)	.796 (20.2)	—	8.687 (220.6)
LITHIUM CELL HOLDERS									
1103		1	2	.625 (15.9)	1.156 (29.4)	.595 (15.1)	.345 (8.8)	—	.531 (13.5)
1105		1	2	.390 (9.9)	1.044 (26.5)	.670 (17.0)	.420 (10.7)	—	.500 (12.7)

*Clips mounted on .062 (1.57) thick Phenolic board.

DIMENSIONS ARE FOR REFERENCE ONLY

Marking
 A
 B
 C
 D
 E
 F
 G
 H
 I
 J
 K
 L
 M
 N
 O
 P
 Q
 R
 S
 T
 U
 V
 W
 X
 Y
 Z
 AA
 BB
 CC
 DD
 EE
 FF
 GG
 HH
 II
 JJ
 KK
 LL
 MM
 NN
 OO
 PP
 QQ
 RR
 SS
 TT
 UU
 VV
 WW
 XX
 YY
 ZZ
 A-A
 B-B
 C-C
 D-D
 E-E
 F-F
 G-G
 H-H
 I-I
 J-J
 K-K
 L-L
 M-M
 N-N
 O-O
 P-P
 Q-Q
 R-R
 S-S
 T-T
 U-U
 V-V
 W-W
 X-X
 Y-Y
 Z-Z
 AA-AA
 BB-BB
 CC-CC
 DD-DD
 EE-EE
 FF-FF
 GG-GG
 HH-HH
 II-II
 JJ-JJ
 KK-KK
 LL-LL
 MM-MM
 NN-NN
 OO-OO
 PP-PP
 QQ-QQ
 RR-RR
 SS-SS
 TT-TT
 UU-UU
 VV-VV
 WW-WW
 XX-XX
 YY-YY
 ZZ-ZZ
 AA-AA
 BB-BB
 CC-CC
 DD-DD
 EE-EE
 FF-FF
 GG-GG
 HH-HH
 II-II
 JJ-JJ
 KK-KK
 LL-LL
 MM-MM
 NN-NN
 OO-OO
 PP-PP
 QQ-QQ
 RR-RR
 SS-SS
 TT-TT
 UU-UU
 VV-VV
 WW-WW
 XX-XX
 YY-YY
 ZZ-ZZ
 A-A
 B-B
 C-C
 D-D
 E-E
 F-F
 G-G
 H-H
 I-I
 J-J
 K-K
 L-L
 M-M
 N-N
 O-O
 P-P
 Q-Q
 R-R
 S-S
 T-T
 U-U
 V-V
 W-W
 X-X
 Y-Y
 Z-Z
 AA-AA
 BB-BB
 CC-CC
 DD-DD
 EE-EE
 FF-FF
 GG-GG
 HH-HH
 II-II
 JJ-JJ
 KK-KK
 LL-LL
 MM-MM
 NN-NN
 OO-OO
 PP-PP
 QQ-QQ
 RR-RR
 SS-SS
 TT-TT
 UU-UU
 VV-VV
 WW-WW
 XX-XX
 YY-YY
 ZZ-ZZ
 A-A
 B-B
 C-C
 D-D
 E-E
 F-F
 G-G
 H-H
 I-I
 J-J
 K-K
 L-L
 M-M
 N-N
 O-O
 P-P
 Q-Q
 R-R
 S-S
 T-T
 U-U
 V-V
 W-W
 X-X
 Y-Y
 Z-Z
 AA-AA
 BB-BB
 CC-CC
 DD-DD
 EE-EE
 FF-FF
 GG-GG
 HH-HH
 II-II
 JJ-JJ
 KK-KK
 LL-LL
 MM-MM
 NN-NN
 OO-OO
 PP-PP
 QQ-QQ
 RR-RR
 SS-SS
 TT-TT
 UU-UU
 VV-VV
 WW-WW
 XX-XX
 YY-YY
 ZZ-ZZ
 A-A
 B-B
 C-C
 D-D
 E-E
 F-F
 G-G
 H-H
 I-I
 J-J
 K-K
 L-L
 M-M
 N-N
 O-O
 P-P
 Q-Q
 R-R
 S-S
 T-T
 U-U
 V-V
 W-W
 X-X
 Y-Y
 Z-Z
 AA-AA
 BB-BB
 CC-CC
 DD-DD
 EE-EE
 FF-FF
 GG-GG
 HH-HH
 II-II
 JJ-JJ
 KK-KK
 LL-LL
 MM-MM
 NN-NN
 OO-OO
 PP-PP
 QQ-QQ
 RR-RR
 SS-SS
 TT-TT
 UU-UU
 VV-VV
 WW-WW
 XX-XX
 YY-YY
 ZZ-ZZ
 A-A
 B-B
 C-C
 D-D
 E-E
 F-F
 G-G
 H-H
 I-I
 J-J
 K-K
 L-L
 M-M
 N-N
 O-O
 P-P
 Q-Q
 R-R
 S-S
 T-T
 U-U
 V-V
 W-W
 X-X
 Y-Y
 Z-Z
 AA-AA
 BB-BB
 CC-CC
 DD-DD
 EE-EE
 FF-FF
 GG-GG
 HH-HH
 II-II
 JJ-JJ
 KK-KK
 LL-LL
 MM-MM
 NN-NN
 OO-OO
 PP-PP
 QQ-QQ
 RR-RR
 SS-SS
 TT-TT
 UU-UU
 VV-VV
 WW-WW
 XX-XX
 YY-YY
 ZZ-ZZ
 A-A
 B-B
 C-C
 D-D
 E-E
 F-F
 G-G
 H-H
 I-I
 J-J
 K-K
 L-L
 M-M
 N-N
 O-O
 P-P
 Q-Q
 R-R
 S-S
 T-T
 U-U
 V-V
 W-W
 X-X
 Y-Y
 Z-Z
 AA-AA
 BB-BB
 CC-CC
 DD-DD
 EE-EE
 FF-FF
 GG-GG
 HH-HH
 II-II
 JJ-JJ
 KK-KK
 LL-LL
 MM-MM
 NN-NN
 OO-OO
 PP-PP
 QQ-QQ
 RR-RR
 SS-SS
 TT-TT
 UU-UU
 VV-VV
 WW-WW
 XX-XX
 YY-YY
 ZZ-ZZ
 A-A
 B-B
 C-C
 D-D
 E-E
 F-F
 G-G
 H-H
 I-I
 J-J
 K-K
 L-L
 M-M
 N-N
 O-O
 P-P
 Q-Q
 R-R
 S-S
 T-T
 U-U
 V-V
 W-W
 X-X
 Y-Y
 Z-Z
 AA-AA
 BB-BB
 CC-CC
 DD-DD
 EE-EE
 FF-FF
 GG-GG
 HH-HH
 II-II
 JJ-JJ
 KK-KK
 LL-LL
 MM-MM
 NN-NN
 OO-OO
 PP-PP
 QQ-QQ
 RR-RR
 SS-SS
 TT-TT
 UU-UU
 VV-VV
 WW-WW
 XX-XX
 YY-YY
 ZZ-ZZ
 A-A
 B-B
 C-C
 D-D
 E-E
 F-F
 G-G
 H-H
 I-I
 J-J
 K-K
 L-L
 M-M
 N-N
 O-O
 P-P
 Q-Q
 R-R
 S-S
 T-T
 U-U
 V-V
 W-W
 X-X
 Y-Y
 Z-Z
 AA-AA
 BB-BB
 CC-CC
 DD-DD
 EE-EE
 FF-FF
 GG-GG
 HH-HH
 II-II
 JJ-JJ
 KK-KK
 LL-LL
 MM-MM
 NN-NN
 OO-OO
 PP-PP
 QQ-QQ
 RR-RR
 SS-SS
 TT-TT
 UU-UU
 VV-VV
 WW-WW
 XX-XX
 YY-YY
 ZZ-ZZ
 A-A
 B-B
 C-C
 D-D
 E-E
 F-F
 G-G
 H-H
 I-I
 J-J
 K-K
 L-L
 M-M
 N-N
 O-O
 P-P
 Q-Q
 R-R
 S-S
 T-T
 U-U
 V-V
 W-W
 X-X
 Y-Y
 Z-Z
 AA-AA
 BB-BB
 CC-CC
 DD-DD
 EE-EE
 FF-FF
 GG-GG
 HH-HH
 II-II
 JJ-JJ
 KK-KK
 LL-LL
 MM-MM
 NN-NN
 OO-OO
 PP-PP
 QQ-QQ
 RR-RR
 SS-SS
 TT-TT
 UU-UU
 VV-VV
 WW-WW
 XX-XX
 YY-YY
 ZZ-ZZ
 A-A
 B-B
 C-C
 D-D
 E-E
 F-F
 G-G
 H-H
 I-I
 J-J
 K-K
 L-L
 M-M
 N-N
 O-O
 P-P
 Q-Q
 R-R
 S-S
 T-T
 U-U
 V-V
 W-W
 X-X
 Y-Y
 Z-Z
 AA-AA
 BB-BB
 CC-CC
 DD-DD
 EE-EE
 FF-FF
 GG-GG
 HH-HH
 II-II
 JJ-JJ
 KK-KK
 LL-LL
 MM-MM
 NN-NN
 OO-OO
 PP-PP
 QQ-QQ
 RR-RR
 SS-SS
 TT-TT
 UU-UU
 VV-VV
 WW-WW
 XX-XX
 YY-YY
 ZZ-ZZ
 A-A
 B-B
 C-C
 D-D
 E-E
 F-F
 G-G
 H-H
 I-I
 J-J
 K-K
 L-L
 M-M
 N-N
 O-O
 P-P
 Q-Q
 R-R
 S-S
 T-T
 U-U
 V-V
 W-W
 X-X
 Y-Y
 Z-Z
 AA-AA
 BB-BB
 CC-CC
 DD-DD
 EE-EE
 FF-FF
 GG-GG
 HH-HH
 II-II
 JJ-JJ
 KK-KK
 LL-LL
 MM-MM
 NN-NN
 OO-OO
 PP-PP
 QQ-QQ
 RR-RR
 SS-SS
 TT-TT
 UU-UU
 VV-VV
 WW-WW
 XX-XX
 YY-YY
 ZZ-ZZ
 A-A
 B-B
 C-C
 D-D
 E-E
 F-F
 G-G
 H-H
 I-I
 J-J
 K-K
 L-L
 M-M
 N-N
 O-O
 P-P
 Q-Q
 R-R
 S-S
 T-T
 U-U
 V-V
 W-W
 X-X
 Y-Y
 Z-Z
 AA-AA
 BB-BB
 CC-CC
 DD-DD
 EE-EE
 FF-FF
 GG-GG
 HH-HH
 II-II
 JJ-JJ
 KK-KK
 LL-LL
 MM-MM
 NN-NN
 OO-OO
 PP-PP
 QQ-QQ
 RR-RR
 SS-SS
 TT-TT
 UU-UU
 VV-VV
 WW-WW
 XX-XX
 YY-YY
 ZZ-ZZ
 A-A
 B-B
 C-C
 D-D
 E-E
 F-F
 G-G
 H-H
 I-I
 J-J
 K-K
 L-L
 M-M
 N-N
 O-O
 P-P
 Q-Q
 R-R
 S-S
 T-T
 U-U
 V-V
 W-W
 X-X
 Y-Y
 Z-Z
 AA-AA
 BB-BB
 CC-CC
 DD-DD
 EE-EE
 FF-FF
 GG-GG
 HH-HH
 II-II
 JJ-JJ
 KK-KK
 LL-LL
 MM-MM
 NN-NN
 OO-OO
 PP-PP
 QQ-QQ
 RR-RR
 SS-SS
 TT-TT
 UU-UU
 VV-VV
 WW-WW
 XX-XX
 YY-YY
 ZZ-ZZ
 A-A
 B-B
 C-C
 D-D
 E-E
 F-F
 G-G
 H-H
 I-I
 J-J
 K-K
 L-L
 M-M
 N-N
 O-O
 P-P
 Q-Q
 R-R
 S-S
 T-T
 U-U
 V-V
 W-W
 X-X
 Y-Y
 Z-Z
 AA-AA
 BB-BB
 CC-CC
 DD-DD
 EE-EE
 FF-FF
 GG-GG
 HH-HH
 II-II
 JJ-JJ
 KK-KK
 LL-LL
 MM-MM
 NN-NN
 OO-OO
 PP-PP
 QQ-QQ
 RR-RR
 SS-SS
 TT-TT
 UU-UU
 VV-VV
 WW-WW
 XX-XX
 YY-YY
 ZZ-ZZ
 A-A
 B-B
 C-C
 D-D
 E-E
 F-F
 G-G
 H-H
 I-I
 J-J
 K-K
 L-L
 M-M
 N-N
 O-O
 P-P
 Q-Q
 R-R
 S-S
 T-T
 U-U
 V-V
 W-W
 X-X
 Y-Y
 Z-Z
 AA-AA
 BB-BB
 CC-CC
 DD-DD
 EE-EE
 FF-FF
 GG-GG
 HH-HH
 II-II
 JJ-JJ
 KK-KK
 LL-LL
 MM-MM
 NN-NN
 OO-OO
 PP-PP
 QQ-QQ
 RR-RR
 SS-SS
 TT-TT
 UU-UU
 VV-VV
 WW-WW
 XX-XX
 YY-YY
 ZZ-ZZ
 A-A
 B-B
 C-C
 D-D
 E-E
 F-F
 G-G
 H-H
 I-I
 J-J
 K-K
 L-L
 M-M
 N-N
 O-O
 P-P
 Q-Q
 R-R
 S-S
 T-T
 U-U
 V-V
 W-W
 X-X
 Y-Y
 Z-Z
 AA-AA
 BB-BB
 CC-CC
 DD-DD
 EE-EE
 FF-FF
 GG-GG
 HH-HH
 II-II
 JJ-JJ
 KK-KK
 LL-LL
 MM-MM
 NN-NN
 OO-OO
 PP-PP
 QQ-QQ
 RR-RR
 SS-SS
 TT-TT
 UU-UU
 VV-VV
 WW-WW
 XX-XX
 YY-YY
 ZZ-ZZ
 A-A
 B-B
 C-C
 D-D
 E-E
 F-F
 G-G
 H-H
 I-I
 J-J
 K-K
 L-L
 M-M
 N-N
 O-O
 P-P
 Q-Q
 R-R
 S-S
 T-T
 U-U
 V-V
 W-W
 X-X
 Y-Y
 Z-Z
 AA-AA
 BB-BB
 CC-CC
 DD-DD
 EE-EE
 FF-FF
 GG-GG
 HH-HH
 II-II
 JJ-JJ
 KK-KK
 LL-LL
 MM-MM
 NN-NN
 OO-OO
 PP-PP
 QQ-QQ
 RR-RR
 SS-SS
 TT-TT
 UU-UU
 VV-VV
 WW-WW
 XX-XX
 YY-YY
 ZZ-ZZ
 A-A
 B-B
 C-C
 D-D
 E-E
 F-F
 G-G
 H-H
 I-I
 J-J
 K-K
 L-L
 M-M
 N-N
 O-O
 P-P
 Q-Q
 R-R
 S-S
 T-T
 U-U
 V-V
 W-W
 X-X
 Y-Y
 Z-Z
 AA-AA
 BB-BB
 CC-CC
 DD-DD
 EE-EE
 FF-FF
 GG-GG
 HH-HH
 II-II
 JJ-JJ
 KK-KK
 LL-LL
 MM-MM
 NN-NN
 OO-OO
 PP-PP
 QQ-QQ
 RR-RR
 SS-SS
 TT-TT
 UU-UU
 VV-VV
 WW-WW
 XX-XX
 YY-YY
 ZZ-ZZ
 A-A
 B-B
 C-C
 D-D
 E-E
 F-F
 G-G
 H-H
 I-I
 J-J
 K-K
 L-L
 M-M
 N-N
 O-O
 P-P
 Q-Q
 R-R
 S-S
 T-T
 U-U
 V-V
 W-W
 X-X
 Y-Y
 Z-Z
 AA-AA
 BB-BB
 CC-CC
 DD-DD
 EE-EE
 FF-FF
 GG-GG
 HH-HH
 II-II
 JJ-JJ
 KK-KK
 LL-LL
 MM-MM
 NN-NN
 OO-OO
 PP-PP
 QQ-QQ
 RR-RR
 SS-SS
 TT-TT
 UU-UU
 VV-VV
 WW-WW
 XX-XX
 YY-YY
 ZZ-ZZ
 A-A
 B-B
 C-C
 D-D
 E-E
 F-F
 G-G
 H-H
 I-I
 J-J
 K-K
 L-L
 M-M
 N-N
 O-O
 P-P
 Q-Q
 R-R
 S-S
 T-T
 U-U
 V-V
 W-W
 X-X
 Y-Y
 Z-Z
 AA-AA
 BB-BB
 CC-CC
 DD-DD
 EE-EE
 FF-FF
 GG-GG
 HH-HH
 II-II
 JJ-JJ
 KK-KK
 LL-LL
 MM-MM
 NN-NN
 OO-OO
 PP-PP
 QQ-QQ
 RR-RR
 SS-SS
 TT-TT
 UU-UU
 VV-VV
 WW-WW
 XX-XX
 YY-YY
 ZZ-ZZ
 A-A
 B-B
 C-C
 D-D
 E-E
 F-F
 G-G
 H-H
 I-I
 J-J
 K-K
 L-L
 M-M
 N-N
 O-O
 P-P
 Q-Q
 R-R
 S-S
 T-T
 U-U
 V-V
 W-W
 X-X
 Y-Y
 Z-Z
 AA-AA
 BB-BB
 CC-CC
 DD-DD
 EE-EE
 FF-FF
 GG-GG
 HH-HH
 II-II
 JJ-JJ
 KK-KK
 LL-LL
 MM-MM
 NN-NN
 OO-OO
 PP-PP
 QQ-QQ
 RR-RR
 SS-SS
 TT-TT
 UU-UU
 VV-VV
 WW-WW
 XX-XX
 YY-YY
 ZZ-ZZ
 A-A
 B-B
 C-C
 D-D
 E-E
 F-F
 G-G
 H-H