

WIRE CONNECTOR 2 CABLES CU WITH CONTROL WIRE TAP 3  
PCS. ACCESSORY FOR: 3VA5/6 400/600







Model	
Product brand name	SENTRON
Product designation	accessories
Design of the product	circular conductor terminal

Connections according IEC	
Connectable conductor cross-section	
<ul style="list-style-type: none"> <li>• for copper cable / finely stranded / minimum</li> </ul>	70 mm <sup>2</sup>
<ul style="list-style-type: none"> <li>• for copper cable / finely stranded / maximum</li> </ul>	300 mm <sup>2</sup>
<ul style="list-style-type: none"> <li>• for copper cable / stranded / minimum</li> </ul>	70 mm <sup>2</sup>
<ul style="list-style-type: none"> <li>• for copper cable / stranded / maximum</li> </ul>	300 mm <sup>2</sup>
Wire stripping length	31 / 58,5 mm
Tightening torque / when using copper cables	
<ul style="list-style-type: none"> <li>• stranded</li> </ul>	42 Nm
<ul style="list-style-type: none"> <li>• finely stranded</li> </ul>	42 Nm

Connections according UL	
Wire stripping length	1.2 / 2.3 in
Connectable conductor cross-section	
<ul style="list-style-type: none"> <li>• for copper cable / stranded / minimum</li> </ul>	2/0 AWG

<ul style="list-style-type: none"> <li>• for copper cable / stranded / maximum</li> <li>• for copper cable / finely stranded / minimum</li> <li>• for copper cable / finely stranded / maximum</li> </ul>	600 kcmil 2/0 AWG 600 kcmil
Tightening torque / when using copper cables <ul style="list-style-type: none"> <li>• stranded</li> <li>• finely stranded</li> </ul>	370 lb-in 370 lb-in

## Certificates

General Product Approval	EMC	Declaration of Conformity	other
 UL		 RCM	 EG-Konf.
			<a href="#">Miscellaneous</a>

## Further information

### Information- and Downloadcenter (Catalogs, Brochures,...)

<http://www.siemens.com/lowvoltage/catalogs>

### Industry Mall (Online ordering system)

<https://mall.industry.siemens.com/mall/en/en/Catalog/product?mlfb=3VA9473-0JL23>

### Service&Support (Manuals, Certificates, Characteristics, FAQs,...)

<https://support.industry.siemens.com/cs/ww/en/ps/3VA9473-0JL23>

### Image database (product images, 2D dimension drawings, 3D models, device circuit diagrams, ...)

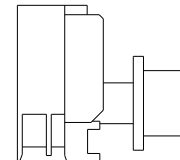
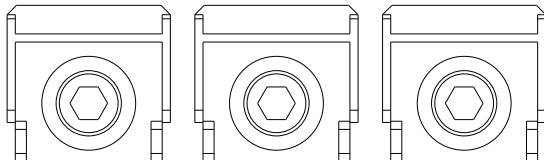
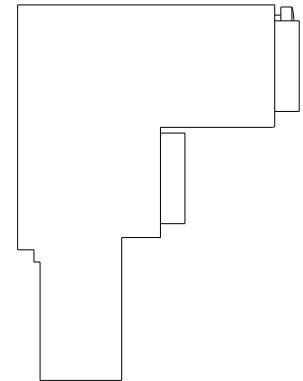
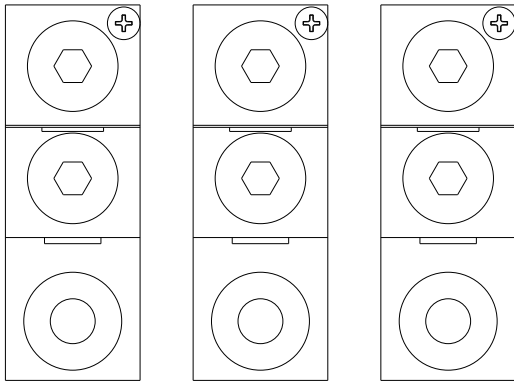
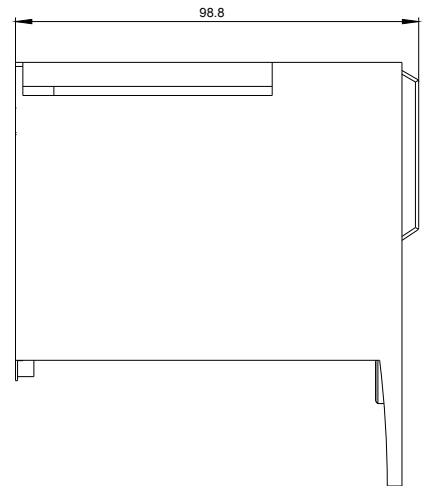
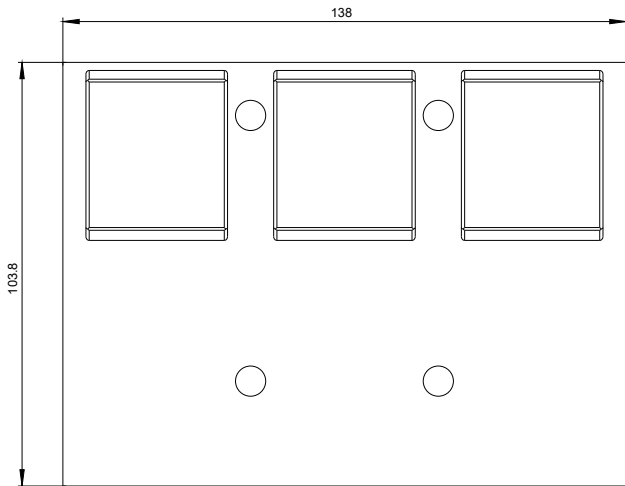
[http://www.automation.siemens.com/bilddb/cax\\_en.aspx?mlfb=3VA9473-0JL23](http://www.automation.siemens.com/bilddb/cax_en.aspx?mlfb=3VA9473-0JL23)

### CAX-Online-Generator

<http://www.siemens.com/cax>

### Tender specifications

<http://www.siemens.com/specifications>



**last modified:**

08/28/2017