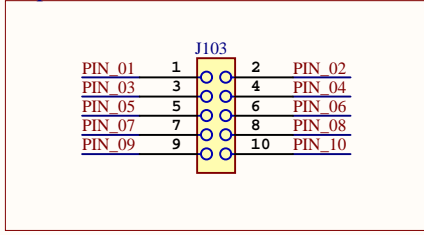
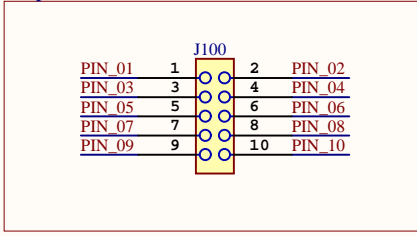


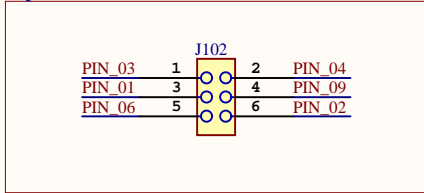
10-pin Atmel-ICE Connector



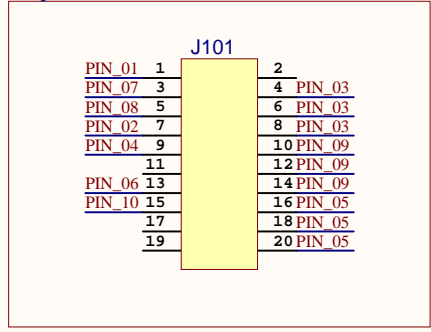
10-pin 100mil AVR & ARM



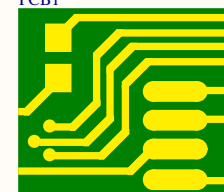
6-pin 50mil AVR



20-pin 100mil SAM



PCB1

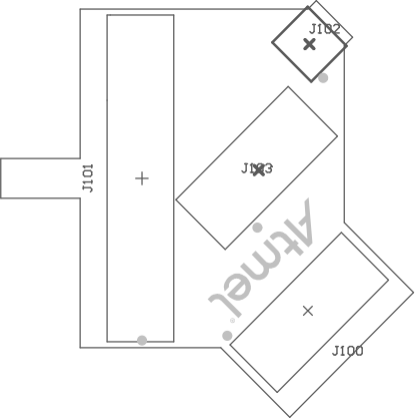


A08-2009  
A08-2009

LABEL1  
Label PCBA Small 6x6mm



Drawn By: *			
Engineer: *			
Project Title *	Designed with 		
Sheet Title Programming and Debug Adapter	Altium.com		
Size A3	PCB Assembly Number: A09-2198	PCBA Revision: 4	Date: 17.07.2020
File: Adapter.SchDoc	PCB Number: A08-2009	PCB Revision: 2	Page: 1 of 1





# Component list

Bill of Materials Print for Schematic Document [Adapter.SchDoc]

Source Data From:

Adapter.SchDoc

Project:

Adapter.PrjPcb

Variant:

None

Report Date: 17.07.2020

14:57

Print Date: 17.07.2020

14:57:56



Fitted	Designator	Quantity	Value	Manufacturer	MPN	Description
Fitted	J100	1	611-92-05GB00			Socket 2x5, Right Angle, 2.54mm Pitch, Through-hole
Fitted	J101	1	611-92-10GB00			Mirrored 2x10, female pin header receptable, right-angled, 2.54mm pitch, THM,
Fitted	J102	1	1.27 x 3/90c			Socket 2x3, Right Angle, 1.27mm Pitch, Through-hole
Fitted	J103	1	SHF-105-01-L-D-TH	SAMTEC	SHF-105-01-L-D-TH	Shrouded header 2x5, Straight, 1.27mm Pitch, Through-hole
Fitted	LABEL1	1	Label PCBA Small 6x6mm	ACT Logimark AS	505462	PCBA identification label PP Top White Gloss
Fitted	PCB1	1	A08-2009			Adapter man (single adapter solution for Atmel-ICE) PCB
		6				

Approved

Notes

