

HANDLE SHANKS
Threaded blind holes

HANDLE SHANK COVERS
Polyamide based (PA) technopolymer, black colour, matte finish.

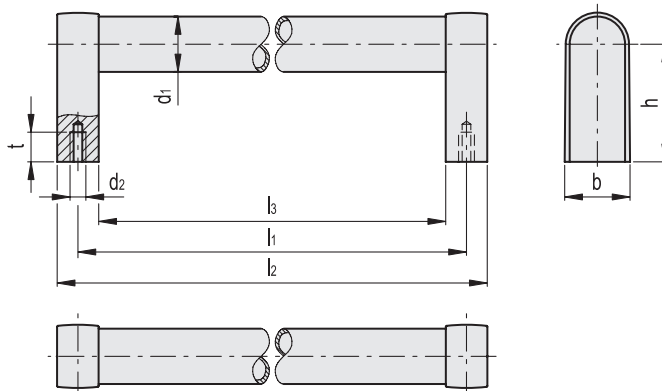
STANDARD EXECUTIONS

- **GN 669-SW**: aluminium, epoxy resin coating, RAL 9005 black colour, matte finish. Handle shanks in black colour.
- **GN 669-EL**: anodised aluminium, natural colour, matte finish. Handle shanks in grey colour.

APPLICATIONS
GN 669 tubular handles are particularly suitable for handrail functions.

SPECIAL EXECUTIONS ON REQUEST

- Handle shanks with zinc-plated threaded pin, lock nuts and washers for front mounting (GN 669-B).
- Handle shanks with bores for the connection to other tubes, even to curved tubes.
- Tubes, handle shanks, handle shank covers in different colours.
- Different lengths.



Code	Description	d1	l1 ±0.5	d2	b	h	l2	l3	tmin	⚖️
GN.27612	GN 669-28-200-A-SW	28	200	M8	32	60	220	180	15	180
GN.27622	GN 669-28-300-A-SW	28	300	M8	32	60	320	280	15	220
GN.27632	GN 669-28-500-A-SW	28	500	M8	32	60	520	480	15	290
GN.27611	GN 669-28-200-A-EL	28	200	M8	32	60	220	180	15	180
GN.27621	GN 669-28-300-A-EL	28	300	M8	32	60	320	280	15	220
GN.27631	GN 669-28-500-A-EL	28	500	M8	32	60	520	480	15	290